

Poste Italiane S.p.A.  
Spedizione in  
Abbonamento Postale - 70%  
DCB Genova

ISSN 0373-3491

# BOLLETTINO DELLA SOCIETÀ ENTOMOLOGICA ITALIANA

---

**Volume 148**

---

Fascicolo I

---

gennaio-aprile 2016

---

30 aprile 2016



SOCIETÀ ENTOMOLOGICA ITALIANA via Brigata Liguria 9 Genova

---

# SOCIETÀ ENTOMOLOGICA ITALIANA

---

Sede di Genova, via Brigata Liguria, 9 presso il Museo Civico di Storia Naturale

## ■ Consiglio Direttivo 2015-2017

Presidente:	<i>Francesco Pennacchio</i>
Vice Presidente:	<i>Roberto Poggi</i>
Segretario:	<i>Giovanni Ratto</i>
Amministratore:	<i>Giulio Gardini</i>
Bibliotecario:	<i>Antonio Rey</i>
Direttore delle Pubblicazioni:	<i>Pier Mauro Giachino</i>
Consiglieri:	<i>Alberto Ballerio, Luca Bartolozzi, Andrea Battisti Marco A. Bologna, Achille Casale, Giovanni Dellacasa, Nunzio Isidoro, Gianfranco Liberti, Bruno Massa, Massimo Meregalli, Augusto Vigna Taglianti, Stefano Zoia</i>
Revisori dei Conti:	<i>Enrico Gallo, Giuliano Lo Pinto, Gianni Tognon</i>
Revisori dei Conti supplenti:	<i>Massimo Meli, Sergio Riese</i>
Segreteria di Redazione:	<i>Loris Galli</i>

## ■ Consulenti Editoriali

PAOLO AUDISIO (Roma) - EMILIO BALLETO (Torino) - MAURIZIO BIONDI (L'Aquila) - MARCO A. BOLOGNA (Roma)  
PIETRO BRANDMAYR (Cosenza) - ROMANO DALLAI (Siena) - MARCO DELLACASA (Calci, Pisa) - ERNST HEISS  
(Innsbruck) - MANFRED JÄCH (Wien) - FRANCO MASON (Verona) - LUIGI MASUTTI (Padova) - MASSIMO MEREGALLI  
(Torino) - ALESSANDRO MINELLI (Padova)- IGNACIO RIBERA (Barcelona) - JOSÉ M. SALGADO COSTAS (Leon) -  
VALERIO SBORDONI (Roma) - BARBARA KNOFLACH-THALER (Innsbruck) - STEFANO TURILLAZZI (Firenze) - ALBERTO  
ZILLI (Londra) - PETER ZWICK (Schlitz).

---

# **BOLLETTINO DELLA SOCIETÀ ENTOMOLOGICA ITALIANA**

Fondata nel 1869 - Eretta a Ente Morale con R. Decreto 28 Maggio 1936

---

**Volume 148**

---

Fascicolo I

---

gennaio-aprile 2016

30 aprile 2016

REGISTRATO PRESSO IL TRIBUNALE DI GENOVA AL N. 76 (4 LUGLIO 1949)  
Prof. Achille Casale - Direttore Responsabile  
Spedizione in Abbonamento Postale 70% - Quadrimestrale  
Pubblicazione a cura di PAGEPress - Via G. Belli 7, 27100 Pavia  
Stampa: Press Up srl, via La Spezia 118/C, 00055 Ladispoli (RM), Italy

**SOCIETÀ ENTOMOLOGICA ITALIANA via Brigata Liguria 9 Genova**

Lorenzo ZANELLA\*

**Microsystematic revision of the populations of *Abax parallelepipedus*  
(Piller & Mitterpacher, 1783) occurring in central-western Europe  
(Coleoptera Carabidae)**

**Riassunto:** *Revisione microsistemica delle popolazioni di Abax parallelepipedus (Piller & Mitterpacher, 1783) diffuse in Europa centro-occidentale (Coleoptera Carabidae).*

La variabilità morfologica delle popolazioni europee centro-occidentali di *Abax parallelepipedus* è stata studiata al fine di revisionare la microsistemica di questa specie. Vengono discusse le descrizioni originali e le revisioni sistematiche pubblicate dalla seconda metà del XVIII secolo. Variabili biometriche e indici morfometrici sono stati rilevati in 792 esemplari provenienti da diversi Paesi europei. I dati sono stati sottoposti ad analisi statistica con l'obiettivo di discriminare le popolazioni differenziate in misura significativa rispetto alla forma nominotipica. Vengono discusse anche le caratteristiche dei genitali maschili. I risultati attestano che le variazioni morfologiche divengono più rilevanti tra le popolazioni presenti negli ambienti alpini e quelle italiane mostrano i tratti somatici ed eedeagici maggiormente differenziati. Sulla base di questi risultati, *A. p. euganensis* Schatzmayr 1944 viene resuscitato dalla sinonimia con *A. p. inferior*, mentre le seguenti nuove sinonimie vengono proposte:

*Abax parallelepipedus parallelepipedus* (Piller & Mitterpacher, 1783)

= *A. p. subpunctatus* (Dejean, 1828) **syn. nov.**

= *A. p. audouini* (L. Dufour, 1851) **syn. nov.**

= *A. p. germanus* Schaubberger, 1927 **syn. nov.**

*Abax parallelepipedus inferior* (Seidlitz, 1887)

= *A. p. alpiogradus* Schaubberger 1927 (*sensu* Schatzmayr, 1944) **syn. nov.**

Alla luce dei dati raccolti viene ipotizzato e discusso uno scenario filogeografico.

**Abstract:** Morphological variation of central-western European populations of *Abax parallelepipedus* was studied in order to revise the microsystematics of this species. Original descriptions and systematic revisions published since the second half of the 18<sup>th</sup> century are discussed. Biometric variables and morphometric indexes were evaluated on 792 specimens sampled from several European countries. The data were statistically analysed in order to discriminate the populations significantly differentiated from the nominotypical form. Features of male genitalia are also discussed. The results attest that the morphological variation becomes more relevant among populations inhabiting Alpine environments and the Italian ones show the most distinctive modifications of somatic and/or aedeagial traits. On the basis of these results, *A. p. euganensis* Schatzmayr, 1944 is resurrected from synonymy with *A. p. inferior*, whereas the following new synonymies are proposed:

*Abax parallelepipedus parallelepipedus* (Piller & Mitterpacher, 1783)

= *A. p. subpunctatus* (Dejean, 1828) **syn. nov.**

= *A. p. audouini* (L. Dufour, 1851) **syn. nov.**

= *A. p. germanus* Schaubberger, 1927 **syn. nov.**

*Abax parallelepipedus inferior* (Seidlitz, 1887)

= *A. p. alpiogradus* Schaubberger, 1927 (*sensu* Schatzmayr, 1944) **syn. nov.**

A phylogeographical scenario is hypothesized and discussed in the light of the collected data.

**Key words:** *Abax parallelepipedus*, Subspecies, Microsystematic, Biogeography, Carabidae, Morphology, Geographical variation.

## INTRODUCTION

Few ground beetles have achieved an evolutionary success comparable to that of *Abax parallelepipedus*. Its highly adaptive capacity has allowed this medium-sized Molopina to spread across most of the European continent, often becoming dominant among geophilic carabids of the forestry assemblages

(Andersen *et al.*, 1990; Loreau & Nolf, 1993; Varvara & Pilat, 2004; Huidu, 2011, 2012). Its distribution includes (data by Vigna Taglianti, 2014; excepting other references explicitly cited): Austria, Belgium, Bosnia and Herzegovina, Bulgaria, Croatia, Czech Republic, Danish mainland, Estonia, France, Germany, Hungary, Italian mainland, Kaliningrad Region, Kosovo, Latvia

\*Lorenzo Zanella, Museo civico di Storia Naturale di Venezia, Santa Croce 1730, 30135 Venezia, Italy.  
E-mail: lorenzo.zanella@libero.it

(Telnov, 2004: 23), Liechtenstein, Luxembourg, Republic of Moldova, Montenegro, Norwegian mainland, Poland, Romania, Central Russia, Southern Russia, Serbia (incl. Voivodina), Slovakia, Slovenia, Northern Spanish mainland, Sweden, Switzerland, The Netherlands, Ukraine (Carpathians and Transcarpathia; Kryzhanovskij *et al.*, 1995: 108), United Kingdom.

Rare and local in some regions at the edges of its distribution area, such as Southern Sweden (Lindroth, 1945: 15), *A. parallelepipedus* is abundant in beech forests of central Europe, although it is not tied to any specific tree (Thiele, 1977). This predator is an important contributor to the ecological balance of forest ecosystems (Chaabane *et al.*, 1996) and its reproductive behaviour is of special interest since the female takes care of the eggs (Löser, 1970; Brandmayr, 1977; Brandmayr & Zetto-Brandmayr, 1979), which is quite rare among the Carabidae.

Throughout the process of geographical spread, this species developed morphologically differentiated populations, so that several subspecies were described between the second half of the 18<sup>th</sup> and the first half of the 20<sup>th</sup> century, many of which are still formally accepted but ignored by most authors. The morphological variation of *A. parallelepipedus* is consistent with the isolation by distance theory (IBD), which assumes that semi-isolated subpopulations of a continuous population inhabiting a large territory but with short dispersal capacity, tend to develop random and nonadaptive differentiations (Wright, 1943). The short dispersal range of *A. parallelepipedus* was studied by Loreau & Nolf (1993), while Keller *et al.* (2003a, 2004) showed that even the fragmentation of forest habitats due to main roads can interfere with the normal within population gene flow. However, no genetic investigation has yet been performed to verify if the morphological variation observed among the described subspecies has resulted from the casual selection of particular traits caused by IBD, or if it effectively represents an oriented differentiative process, potentially suitable to lead to speciation. The question is not irrelevant, since the recognition of subspecific populations is acceptable only in the latter case.

So far, the genome of this species has been investigated using molecular biology techniques to assess the polymorphism of some microsatellite markers (Keller & Lagardèr, 2003b), the phylogenetic relation-

ships with other Molopina (Düring & Brückner, 2000) and to confirm the taxonomic distinction between *A. parallelepipedus lombardus* and *A. fiorii* (sub *angustatus*; Düring, 2002). However, the only information on the genetic distance among some subspecies can be extracted from a comprehensive phylogenetic study on Molopina by Casale & Ribera (2008), where some data attested to the closer relationship between *A. p. inferior* and *A. p. lombardus* than of either with *A. p. contractus*.

The present work aims to analyse the morphological variation of *A. parallelepipedus* and discuss the validity of its subspecies, hypothesizing the main routes this species might have taken to spread throughout Europe.

#### HISTORICAL REVIEW

The systematic history of *Abax parallelepipedus* is made very complicated in terms of both taxonomy and nomenclature by the large number of related taxa described since the mid-18<sup>th</sup> century, often referred to new species and then reduced to subspecies. A perusal of these descriptions is fundamental for a critical analysis of the current taxonomic nomenclature.

Some names, in fact, were probably proposed ignoring the previous ones, while others lack information needed for an unambiguous interpretation.

In order to simplify the overall picture, the cases of *A. fiorii* Jakobson 1907 (= *A. angustatus* Fiori, 1896) and *A. pyrenaicus* (Dejean, 1828) [= *A. grandicollis* (Fairmaire & Laboulbène, 1854)] will not be discussed, despite being considered subspecies of *A. parallelepipedus* throughout some early historical phases and then definitively accepted as valid species.

#### *Abax parallelepipedus parallelepipedus* (Piller & Mitterpacher, 1783)

The description of the nominotypical subspecies (sub *Carabus parallelepipedus*) is due to Piller & Mitterpacher (1783: 105 and pl. VIII), who in 1783 published the results of their entomological survey in the Posega province of the Kingdom of Slavonia (now Požega, eastern Croatia), which at that time was part of the Habsburg Empire. From the environmental notes preceding the description it is possible to guess that the catch zone should be located in the mountains to the south of Kamenska village.

In 1789, the same taxon was again described by Villers (1789: 364) with the junior synonym *Carabus ater*; type locality: southern France. This second description had a wide diffusion among entomologists and, consequently, the name *A. ater* (Villers) remained in use until the end of the 20<sup>th</sup> century. The description of Piller & Mitterpacher was almost forgotten and, in 1828, the name *Abax parallelepipedus* was even used by Dejean (1828: 382) to describe a new species of *Abax*, creating another obstacle to the re-establishment of the correct nomenclatorial priority. The synonymy with *A. parallelepipedus* (Piller & Mitterpacher) was established by Csiki (1916: 15), that also replaced the junior homonym *A. parallelepipedus* (Dejean) with *A. pilleri* Csiki, 1916. Nevertheless, Jeannel (1942: 776) preferred to maintain the junior name *ater* (Villers) in order not to upset the established usage and to avoid the replacement of the junior homonym *A. parallelepipedus* (Dejean). Only recently, Bousquet (2003: 470) formally accepted the nomenclatorial revision proposed by Csiki.

### Description of the Genus *Abax*

In 1810 F.A. Bonelli introduced the genus *Abax* without fixing the type-species; in 1838 Westwood designated *Carabus striola* Fabricius, 1792 [a synonym of *Abax parallelepipedus* (Piller & Mitterpacher, 1783)] as type-species (Madge, 1975). However, throughout most of the 19<sup>th</sup> century many entomologists considered *Abax* as a subgenus of either *Pterostichus* Bonelli or *Feronia* Latreille, depending on the adopted systematic interpretation.

#### *Abax parallelepipedus subpunctatus* (Dejean, 1828)

Described by Dejean (1828: 380) as a subspecies of *Feronia (Abax) striola* (Fabricius) (currently regarded as a synonym of *A. p. parallelepipedus*) on the basis of specimens from mountains in Croatia that he received already labelled as “*Abax subpunctatus* Ziegler”. He described *subpunctatus* as basically similar to the nominotypical subspecies, except for the larger size.

#### *Abax parallelepipedus contractus* (Heer, 1841)

Described by Heer (1841: 561) as *Pterostichus contractus* Lasserre; type locality: Monte Generoso and Centovalli (Canton of Ticino, Switzerland). This description raises some problems that a literature search did not resolve. Heer (ibidem) reported that the

pronotum is square, while it is transverse in all the subspecies of *A. parallelepipedus*. Furthermore, the indicated type locality falls within the distribution area of *A. p. lombardus*, described 50 years later. Fiori (1896) and Porta (1903), in their early systematic revisions of the genus *Abax*, maintained *A. contractus* distinct from *A. parallelepipedus* (sub *ater*) at species level, reporting the following distribution: central Alps (Grigna, Monte Generoso) and Maritime Alps (with specific reference to Valle Pesio).

Schauberg (1927) reduced *A. contractus* to ssp. of *A. parallelepipedus* (sub *ater*), also providing a new description based on one or more specimens from Valle Pesio (Maritime Alps, Italy). Jeannel (1942: 777) did not make any comment on the description provided by Heer, however, he was the first to report a distribution consistent with that currently accepted for *contractus*: French Hautes-Alpes, Maritime Alps, northern Apennines up to the Apuan Alps.

According to Schatzmayr (1944), Heer’s description refers to the species that will be successively re-described by Fiori (1896) under the name of *A. angustatus*. Consequently, Schatzmayr considered as valid the description provided by Schauberg (idem), adopting the name *A. ater contractus* Schauberg 1927, which he reported as being in use for a couple of decades. This taxonomical solution, not conform to the International Code of Nomenclature, was accepted by some subsequent authors (Marcuzzi, 1953; Magistretti, 1965) and was maintained until the publication of the checklist of Italian Carabidae by Vigna Taglianti (1993). Nowadays, however, Heer is again considered the author of the subspecific name *contractus* (Bousquet, 2003: 470; Vigna Taglianti, 2014), despite no explanatory contribution being published.

#### *Abax parallelepipedus audouini* (L. Dufour, 1851)

Described as *Feronia audouini* by Dufour (1851: 315) following an entomological campaign throughout the eastern Pyrenees (Hautes-Pyrénées and Pyrénées-Atlantiques: from Bagnères Adour to Saint-Jean-de-Luz, from Pic du Midi to La Rhune mountain). Jeannel (1942: 776) reported Le Vernet (Ariège department, France) as type locality, perhaps after examining one or more specimens of the typical series.

#### *Abax parallelepipedus curtulus* (Fairmaire, 1856)

An Italian endemism described by Fairmaire (1856: 520) as *Feronia (Abax) curtula*; type locality:

Maritime Alps and Apennines. Fiori (1896) reduced this taxon to a subspecies of *A. contractus*, followed in this interpretation by Porta (1903). Schaubberger (1927) reduced both *curtulus* and *contractus* to subspecies of *parallelepipedus* (sub *ater*), and this was accepted by all later authors.

***Abax parallelepipedus inferior*** (Seidlitz, 1887)

Described by Seidlitz (1887: 37) as a subspecies of *Pterostichus* (*Abax*) *striola*, Dejean, with the following notes:

[...] Bei einer südlichen Form aus Spanien, Südfr., Italien, Siebenbürgen sind b. ♂ die Flgd fast 2mal so lang als breit u. die Zwschr. besonders hinten gewölbt, u. das Hls ist auch nach hinten etwas verengt (var. *inferior* = *striola* Dej.).

The characters described by Seidlitz do not allow a reliable diagnosis and he also did not specify the type locality for this subspecies, instead indicating a broad distribution that includes Spain, southern France, Italy and Transylvania.

In a subsequent book (Seidlitz, 1888: 41), this description was slightly reworded by removing Transylvania from the distribution. Despite this minor change, the distribution remains extremely broad and not consistent with that currently accepted. *A. p. inferior* is presently considered endemic to NE Italy, where it is recorded in Trentino Alto Adige, Veneto and Friuli Venezia Giulia (Magistretti, 1965). The original description, therefore, is unsuitable to verify if Seidlitz described with *inferior* the same subspecies currently designated by that name.

Unfortunately, the only specimen labelled as type found in Seidlitz's collection, held at the Zoologische Staatssammlung München, has a label with an unreadable (handwritten) locality and no date. A second specimen collected in 1889, probably from the same locality as the type, also has an indecipherable locality label, while the remaining specimens in the series are just labelled "Sammlung v. Seidlitz".

Thus, neither the description nor the type allow to identify with certainty which population of *Abax* was sampled by Seidlitz when he established the subspecies *inferior*, even if there are no doubts about the systematic interpretation adopted by subsequent authors, starting with the revision by Fiori (1896).

***Abax parallelepipedus lombardus*** Fiori, 1896

Fiori (1896) described *A. ater lombardus*, indicating Monte Grigna (Lecco, Italy) as the type locality and a distribution restricted to the central Alps. Schaubberger (1927) reduced this subspecies to a variety of *A. p. inferior*, but this interpretation was not accepted by later authors.

***Abax parallelepipedus germanus*** Schaubberger, 1927

***Abax parallelepipedus alpigradus*** Schaubberger, 1927

Both described by Schaubberger (1927) in his revision of the genus *Abax*. Distinctive characters of *germanus*: broader body and more elliptical elytra than the typical form. Pronotum with inner basal foveae short. Aedeagus apex broader and with pronounced angular expansion of the right side. Distribution: Upper and Lower Austria, Switzerland, Central and Southern Germany.

Distinctive characters of *alpigradus*: smaller in size and more slender than the typical form, similar to *curtulus*. Pronotal base distinctly narrower than elytral base. Distribution: restricted areas of Upper Austria (Sengengebirge, Warscheneck, Höllengebirge, Sonwendkogel near Goisern, outskirts of Hallstatt, Gosau).

In his work Schaubberger interpreted *alpigradus* as a variety of *germanus*, but the reason for this choice remains unclear since these two subspecies have opposite differential characters from the nominotypical form. In fact, Schatzmayr (1944) and subsequent authors (Marcuzzi, 1953; Magistretti, 1965; Vigna Taglianti, 1993) considered *alpigradus* as a valid subspecies. Schatzmayr (idem) recorded *alpigradus* from the following Italian and Austrian localities: Friuli (east of the Tagliamento river), Dobratsch, Graz, Badgastein.

***Abax parallelepipedus athesinus*** Depoli, 1939

***Abax parallelepipedus tridentinus*** Depoli, 1939

***Abax parallelepipedus baldensis*** Depoli, 1939

***Abax parallelepipedus zoldanus*** Depoli, 1939

Four new subspecies were described by Depoli (1939) on the basis of specimens from localities scattered between Lake Garda and the Kvarner region. The creation of these new names, sometimes based on very few specimens, is an attempt to overcome the problems arising from the morphological variation observed in *A. parallelepipedus*, especially in the ssp. *inferior*. Schatzmayr (1944) did not consider these

Depoli's taxa and they are now considered junior synonyms of *A. p. inferior*.

***Abax parallelepipedus euganensis* Schatzmayr, 1944**

Described by Schatzmayr (1944) on the basis of a series of specimens from the Euganean Hills and a single female from the Berici Hills (Veneto Region, NE Italy). The male has flattened elytral interstriae and less deep elytral striae, similarly to what is normally observed in females. This subspecific taxon was accepted by some later authors (Marcuzzi, 1953; Magistretti, 1965) but finally reduced to a junior synonym of *A. p. inferior* by Vigna Taglianti (1993).

TAXONOMICAL REMARKS

The systematic history of *A. parallelepipedus* spans over two centuries, during which many problems have accumulated. The descriptions of the nominotypical form and ssp. *audouini*, i.e. the oldest ones, do not report characters suitable to separate them from the other geographical subspecies. Subsequent nomenclatorial acts are often affected by uncertain data that make a correct diagnosis difficult. None of the later authors who proposed systematic revisions reported to have examined the typical series, for most of which it has been impossible to trace where they are presently held. However, thanks to the contribution of one reviewer of this paper, the holotypus of *A. p. contractus* (Heer, 1841) has been now traced in the collection of the ETH Zurich (Switzerland) and its taxonomical revision will be proposed in a next work.

This study does not aim to overcome the nomenclatorial problems, which would require solutions designed *ad hoc* for each taxon, instead, it attempts to propose a systematic review based on the examination of body traits and male genitalia morphology of a significant sampling of the different geographical populations. The entomological material was initially classified according to the taxonomy presently accepted by Vigna Taglianti (2014) and Bousquet (2003: 470):

*Abax parallelepipedus parallelepipedus* (Piller & Mitterpacher, 1783)

- = *Carabus ater* Villers, 1789
- = *Carabus clavipes* Bergstrasser, 1778
- = *Carabus depressus* Olivier, 1795
- = *Carabus dubius* Cuvier, 1833
- = *Abax podolicus* Motschulsky, 1850
- = *Carabus striola* Fabricius, 1792

- Abax parallelepipedus alpigradus* Schaubberger, 1927
- Abax parallelepipedus audouini* (L. Dufour, 1851)
- Abax parallelepipedus contractus* (Heer, 1841)
- Abax parallelepipedus curtulus* (Fairmaire, 1856)
- Abax parallelepipedus germanus* Schaubberger, 1927
- Abax parallelepipedus inferior* (Seidlitz, 1887)
- = *Abax ater athesinus* Depoli, 1939
- = *Abax ater athesinus* var. *anaunus* Depoli, 1939
- = *Abax ater athesinus* var. *dolomiticola* Depoli, 1939
- = *Abax ater baldensis* Depoli, 1939
- = *Abax ater euganensis* Schatzmayr, 1944
- = *Abax ater tridentinus* Depoli, 1939
- = *Abax ater tridentinus* var. *bondonensis* Depoli, 1939
- = *Abax ater zoldanus* Depoli, 1939
- Abax parallelepipedus lombardus* A. Fiori, 1896
- = *Abax ater lombardus* var. *lessinicus* Depoli, 1939
- Abax parallelepipedus subpunctatus* (Dejean, 1828)
- = *Abax ater subpunctatus* var. *istrianus* Depoli, 1939

MATERIALS AND METHODS

The morphological variation of *Abax parallelepipedus* was assessed by studying 792 specimens from several European regions, especially from Italy. As pointed out in the historical review, most of the oldest subspecies descriptions (or species then reduced to subspecies) do not provide useful diagnostic characters, therefore the material examined was classified on the basis of the descriptions by Schaubberger (1927), Jeannel (1942) and Schatzmayr (1944).

All specimens were photographed and their images analysed to detect the following biometric variables: total length (TL), pronotal length (PL), maximum pronotal width (MPW), pronotal base width (PBW), elytral length (EL), maximum elytral width (MEW) and elytral base width (EBW). The reference points adopted to measure the biometric variables are shown in Fig. 1. All variables were detected using NIH Image software v. 1.45s (<http://rsb.info.nih.gov/nih-image>) and measurements are reported in millimetres.

Some morphometric indexes were calculated from the biometric data in order to point out the variation of shape in pronotum and elytra. These indexes are as follows:

- PWI (Pronotum Wideness Index) – MPW:PL ratio that varies proportionally with the transversal shape;



- PRI (Pronotum Roundness Index) – MPW:PBW ratio that varies proportionally with the narrowing of the pronotum base in comparison to its maximum diameter (positioned at around the middle);
- ESI (Elytra Slenderness Index) – EL:MEW ratio that varies proportionally with the slenderness of the elytra;
- ERI (Elytra Roundness Index) – MEW:EBW ratio that varies proportionally with the oval shape of the elytra, due to an increased difference between its maximum width around the middle and the width at the base.

The normal distribution of biometrical data and related morphometric indexes was assessed using the Kolmogorov-Smirnov test, while the assumption of equivalency of variances was verified by using the Bartlett's test (WinSTAT for MS-Excel v. 2007.1, provided by Robert K. Fitch). Despite the data resulting as normally distributed, the data related to *A. p. curtulus*, and sometimes also those related to *A. p. contractus*, showed non-homogenous variances (heteroschedastic data). Since one of the assumptions required to perform the Analysis of Variance (ANOVA) was violated, the statistical significance of the differences between the observed sample means was evaluated by the Kruskal-Wallis test. The statistical difference between the sub-

specific groups and the typical *parallelepipedus* was evaluated by means of the Games-Howell test, which is a non-parametric ANOVA *post-hoc* test designed to treat data sets having unequal variances and unbalanced sizes (Real-Statistics software, provided by Charles Zaiontz; <http://www.real-statistics.com>).

The morphological study was completed by dissecting and examining some male genitalia. The inner sac (membranous extension of the aedeagus) of some aedeagi was everted by injecting toothpaste (Berlov, 1992) or silicon glue (Brandmayr & Algieri, 1994) through the median foramen at the base of the aedeagus using a syringe.

The examined material is held in the following institutional and private collections: Natural History Museum of Venice, Natural History Museum of Trieste, Natural History Museum of Milan, Museum of Zoology of the University "La Sapienza" of Rome, private collection L. Zanella.

## RESULTS AND DISCUSSION

**EXTERNAL CHARACTERS.** Length between 16 and 22 mm, robust parallel-sided shape, dorso-ventrally flattened body, shiny black colour. Head (including eyes) approximately 2/3 of the pronotum in width; frons de-

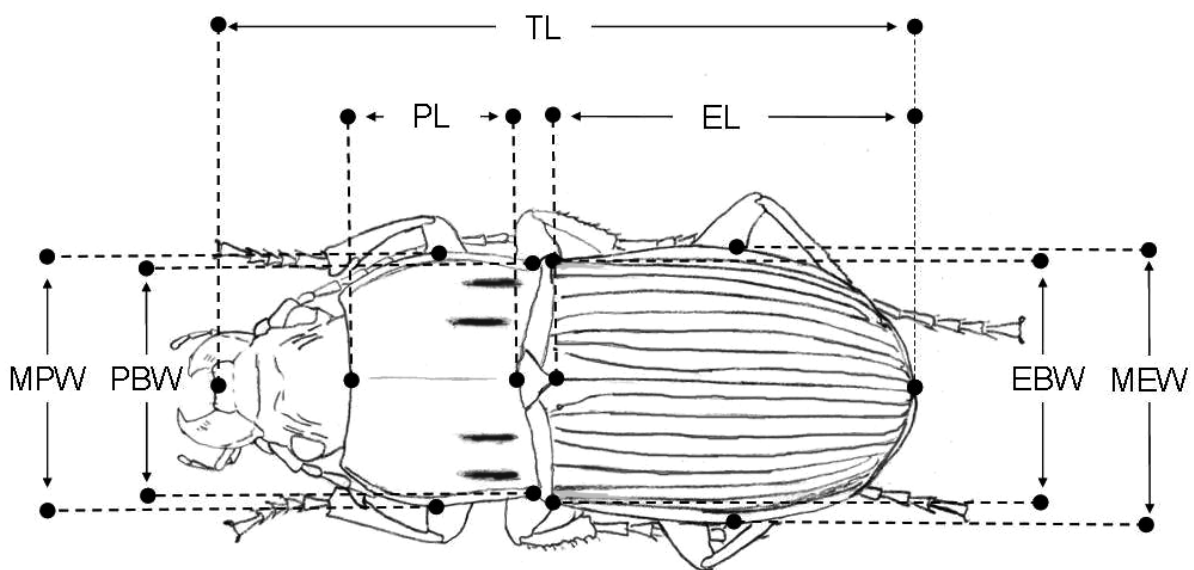


Fig. 1. Somatic position of the reference points adopted to detect the biometric variables.

limited by doubled and wrinkled furrows. Pronotum wider than long, with maximum diameter in the middle or just ahead, sides behind this almost straight and converging to rectangular hind angles. Pronotum lateral margins thick and marked by a deep furrow that fades at the hind angles. Pronotum base concave along its central margin and with two basal foveae each side, unpunctured but transversally wrinkled. Thin transversal wrinkles are scattered on head and pronotum, very superficial and sometimes only visible under the microscope by orienting the light source. Elytral shoulders toothed. Base of the seventh interstria raised in a sharp keel. Scutellary pore almost always present. Male elytra shiny and deeply striated, with interstriae slightly convex; female elytra dull and finely striated, with flat interstriae. Striae may be finely punctured, or all smooth. Brachypterous. A summary of the measurements is given in Tab. 1.

MALE AEDEAGUS. Length of the median lobe 5.5-6.5 mm. The apex (the part between the anterior margin of the median orifice and the tip of the lobe) forms a moderately flattened lamina, slightly asymmetric, with a small angular expansion along the right margin, in sub-terminal position (Figs. 2-4) which is reduced or absent in some subspecies. The terminal margin of the apex tip is bent towards the ventral side and looks as if it were cut transversally. Hereinafter, this abrupt termination is termed “truncation”. The arrows in Fig. 5A point to the angles that delimit this “tip truncation”, observable in dorsal vision by tilting the aedeagus apex at 45° towards the observer. The shape of the tip can vary markedly among the subspecies: in the nominotypical form it is broadly truncated as shown in Fig. 5A, whereas in other subspecies the tip is narrowly truncated, irregularly semi-rounded or roughly pointed (Fig. 5C-D).

Tab. 1. Biometric data (mean values in mm ± standard error, SE) related to the subspecies of *Abax parallelepipedus* currently accepted with the addition of ssp. *euganensis*.

Subspecies	N.	TL		PL		MPW		PBW		EL		MEW		EBW	
		mm	±SE	mm	±SE	mm	±SE	mm	±SE	mm	±SE	mm	±SE	mm	±SE
Females															
<i>parallelepipedus</i>	31	18.37	0.14	4.21	0.03	6.40	0.05	5.85	0.05	9.95	0.08	7.40	0.06	6.26	0.05
<i>audouini</i>	25	18.58	0.19	4.21	0.05	6.33	0.07	5.81	0.07	9.95	0.11	7.35	0.07	6.22	0.07
<i>germanus</i>	13	19.14	0.32	4.35	0.09	6.60	0.13	5.98	0.11	10.12	0.14	7.48	0.12	6.41	0.12
<i>inferior</i>	51	18.25	0.12	4.18	0.03	6.36	0.04	5.74	0.04	9.70	0.06	7.19	0.04	6.15	0.04
<i>alpigradus</i>	13	17.23	0.19	3.87	0.07	5.92	0.07	5.28	0.07	9.25	0.12	6.83	0.09	5.78	0.07
<i>lombardus</i>	29	18.63	0.21	4.34	0.06	6.66	0.08	5.98	0.06	9.89	0.12	7.35	0.08	6.19	0.06
<i>euganensis</i>	50	19.22	0.11	4.49	0.03	7.03	0.05	6.35	0.04	10.16	0.07	7.73	0.05	6.70	0.04
<i>contractus</i>	40	18.34	0.10	4.14	0.03	6.16	0.05	5.34	0.04	9.63	0.06	7.10	0.05	5.73	0.04
<i>curtulus</i>	39	17.51	0.19	3.99	0.04	5.91	0.07	5.19	0.05	9.35	0.11	6.92	0.07	5.54	0.06
<i>subpunctatus</i>	42	20.58	0.16	4.74	0.03	7.19	0.05	6.50	0.05	10.87	0.09	8.12	0.06	6.87	0.04
Males															
<i>parallelepipedus</i>	40	18.39	0.11	4.28	0.03	6.32	0.04	5.76	0.05	9.76	0.06	6.99	0.04	6.17	0.04
<i>audouini</i>	44	18.54	0.12	4.25	0.04	6.33	0.05	5.84	0.04	9.92	0.08	7.07	0.05	6.23	0.04
<i>germanus</i>	26	18.51	0.14	4.29	0.05	6.38	0.06	5.80	0.05	9.78	0.09	7.05	0.07	6.23	0.06
<i>inferior</i>	102	17.97	0.09	4.20	0.02	6.27	0.04	5.71	0.03	9.58	0.05	6.87	0.03	6.08	0.03
<i>alpigradus</i>	24	17.45	0.17	4.04	0.05	5.99	0.07	5.47	0.08	9.44	0.11	6.70	0.06	5.89	0.07
<i>lombardus</i>	52	18.43	0.12	4.35	0.03	6.47	0.05	5.86	0.04	9.75	0.08	6.90	0.05	6.14	0.04
<i>euganensis</i>	38	19.09	0.12	4.56	0.03	6.94	0.05	6.34	0.04	10.13	0.08	7.38	0.05	6.64	0.04
<i>contractus</i>	24	17.90	0.13	4.10	0.04	5.98	0.05	5.23	0.04	9.41	0.08	6.61	0.05	5.52	0.04
<i>curtulus</i>	46	17.31	0.11	4.00	0.03	5.81	0.05	5.18	0.04	9.16	0.07	6.46	0.04	5.49	0.04
<i>subpunctatus</i>	63	20.10	0.11	4.69	0.03	6.98	0.04	6.35	0.04	10.68	0.06	7.66	0.04	6.74	0.04

INTERNAL SAC (OR ENDOPHALLUS). Membranous sac without sclerites or relevant thickenings. When everted and inflated, it appears composed of a main sac having irregular sub-cylindrical shape, with

rounded almost conical ends, which expands distally in a narrower cylindrical lobe, curved to 90°, while two smaller globular expansions of different sizes develop laterally (Fig. 6). The inflated internal sac was

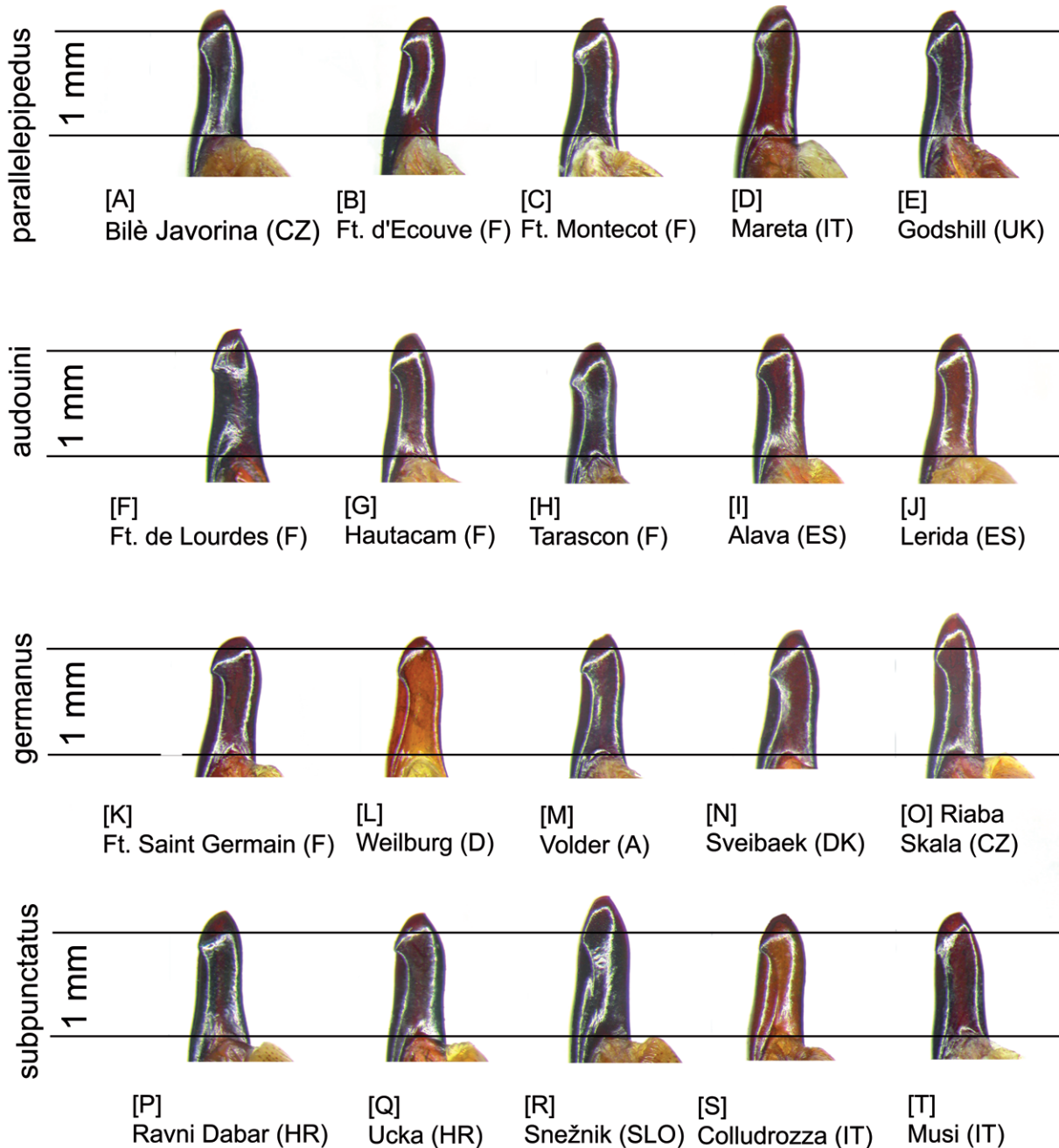


Fig. 2. Apexes of male genitalia in dorsal vision: A-E) *parallelepipedus*; F-J) *audouini*; K-M) *germanus*; N-R) *subpunctatus*.

already used in taxonomy of the genus *Abax* (Brandmayr, 1978), as well as to hypothesize the phylogenetic relationships among some species (Brandmayr & Zetto Brandmayr, 1994). However, in *A. paral-*

*lelepipedus* it offers scarce characters for diagnoses at subspecific levels, mainly due to the high variation and absence of spines or sclerites. Only the pair *contractus-curtulus* frequently showed an additional small

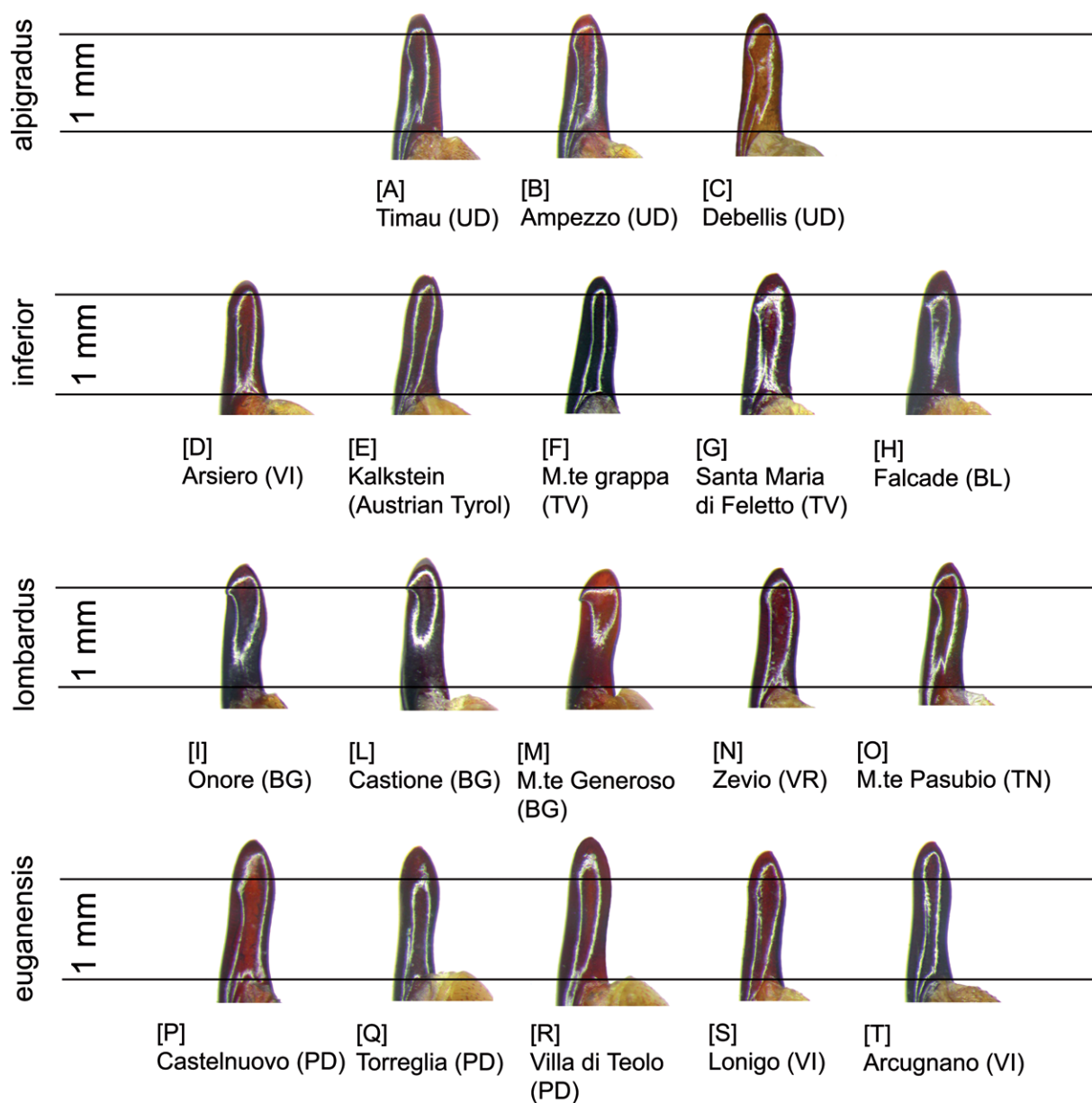


Fig. 3. Apexes of male genitalia in dorsal vision: A-C) *alpigradus*; D-H) *inferior*; I-O) *lombardus*; P-T) *euganensis*.

globular expansion at the left side of the distal lobe base (see arrow in Fig. 6A), highly variable in size and sometimes very small, not observed in the other subspecies. This supernumerary expansion of the internal sac confirms the relevant differentiation of *contractus* and *curtulus* from the typical *parallelepipedus*, as will also be shown by the biometric data. However, abnormal expansions, sometimes similar to those observed in *curtulus-contractus*, were also occasionally observed in other subspecies. These deformities were generally positioned at the base of the cylindrical distal lobe and were sometimes globular in shape, while others took the shape of straight tentacle.

#### REMARKS ON THE MATERIAL EXAMINED

##### *Abax parallelepipedus parallelepipedus*

(Piller & Mitterpacher, 1783)

MEAN TL: 18.4 mm. PRONOTUM: outer basal foveae generally reach the basal margin, whereas the inner ones almost never. ELYTRA: elytral striae can be finely punctured or not. AEDEAGUS: apex with angular expansion always present along the right margin, variably marked. Apex tip sharply truncated, as in Fig. 5A. DISTRIBUTION: it is the most diffused and occurs in most of the areal, perhaps excepting Spain, Slovenia and the

greater part of Croatia. Its presence in Italy is very marginal and often represented by intermediate morphotypes occurring along the borders of the country.

MATERIAL EXAMINED: 31 ♀ & 40 ♂.

United Kingdom: Godshill (Hampshire) 1 ♂; Solway (Cumbria/Northumberland) 1 ♀ & 1 ♂; France: Brecé (Mayenne) 3 ♂; Colombiers du Plessis (Mayenne) 2 ♀; Ft. Réno-Valdieu (Orne) 13 ♀ & 8 ♂; Ft.d'Ecouve (Orne) 3 ♀ & 7 ♂; Ft. de Montecot (Eur & Loir) 1 ♀ & 1 ♂; Ft. de Saint-Germain-en-Laye (Le Mesnil-le-Roi – Yvelines) 1 ♂; Ft. de Grésigne (Tarn) 1 ♀ & 1 ♂; Mointagne Noir (Aude) 3 ♀; Italy: Mareta (BZ) 2 ♂; Czech Rep.: Bilé Karpaty 5 ♀ & 7 ♂.

Intermediate form to ssp. *inferior*: Austria: Irschen 1 ♀ & 6 ♂; Italy: Naz-Sciaves (BZ) 1 ♀ & 2 ♂.

##### *Abax parallelepipedus audouini* (L. Dufour, 1851)

MEAN TL: 18.5 (♂) - 18.6 (♀) mm. PRONOTUM: scattered fine transversal wrinkles often marked, inner foveae long. ELYTRA: striae almost constantly unpunctured. AEDEAGUS: apex with angular expansion very sharp (Fig. 2F-J), tip truncation broad and sharp. DISTRIBUTION: Val d'Aran (Spain), Pyrenees, mountains of Provence, Bouches-du-Rhone (Sainte-Baume) (Jeannel, 1942: 776). Among the material examined,

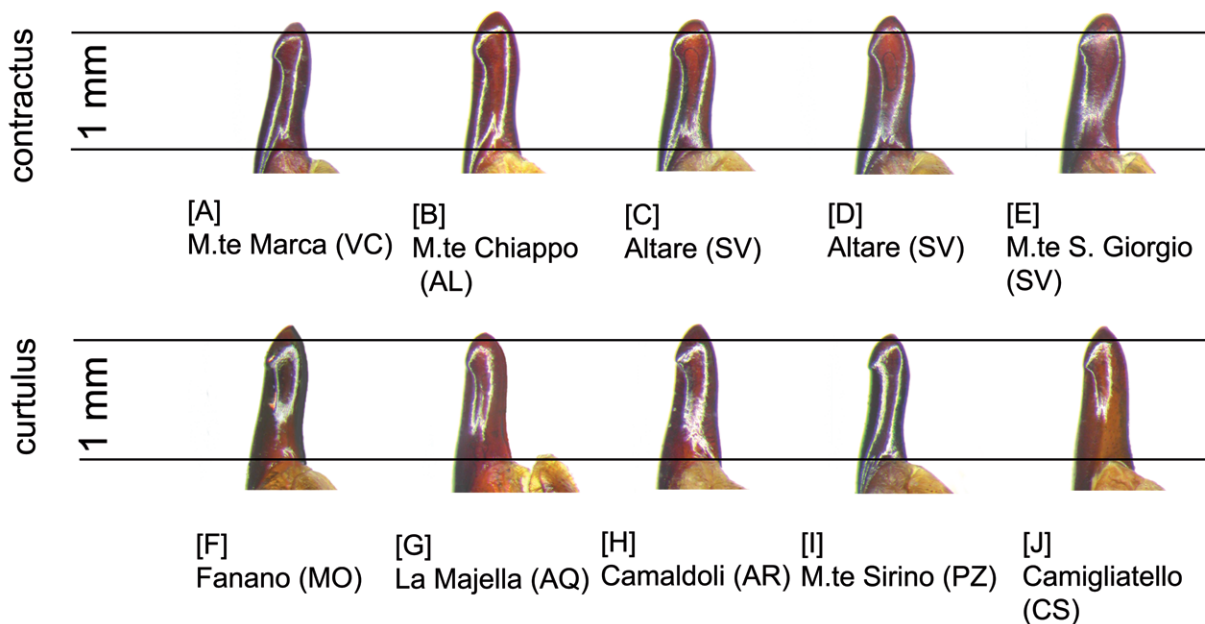


Fig. 4. Apexes of male genitalia in dorsal vision: specimens from the Italian Apennines.

specimens from the Cantabrian Mountains (Espinama, Picos de Europa) also had size and other characters compatible with *audouini*. It therefore seems that *audouini* occurs in the south of France, on the mountains of Provence as well as on the Pyrenees, spreading to Spain across the Cantabrian Cordillera and mountainous areas of Catalonia. However, part of the examined material had a smaller average size than expected (Formiguères, Ordesa, Val de Aran) or the aedeagus apex compatible with the typical form (Peña Cerrada, P.to Velate). My opinion is that the populations occur-

ring in Spain and southern France have developed some peculiar characters but not definitely fixed or substantially different from those of *parallelepipedus*. REMARKS: Dufour (1851) did not provide any useful information to the diagnosis of this subspecies, however, according to Jeannel (*ibidem*), it is larger and has wrinkles at basal foveae of pronotum. The characters proposed by Jeannel, as well as others reported here, do not allow a reliable diagnosis. This makes it very problematic to define the distribution of *A. p. audouini*.

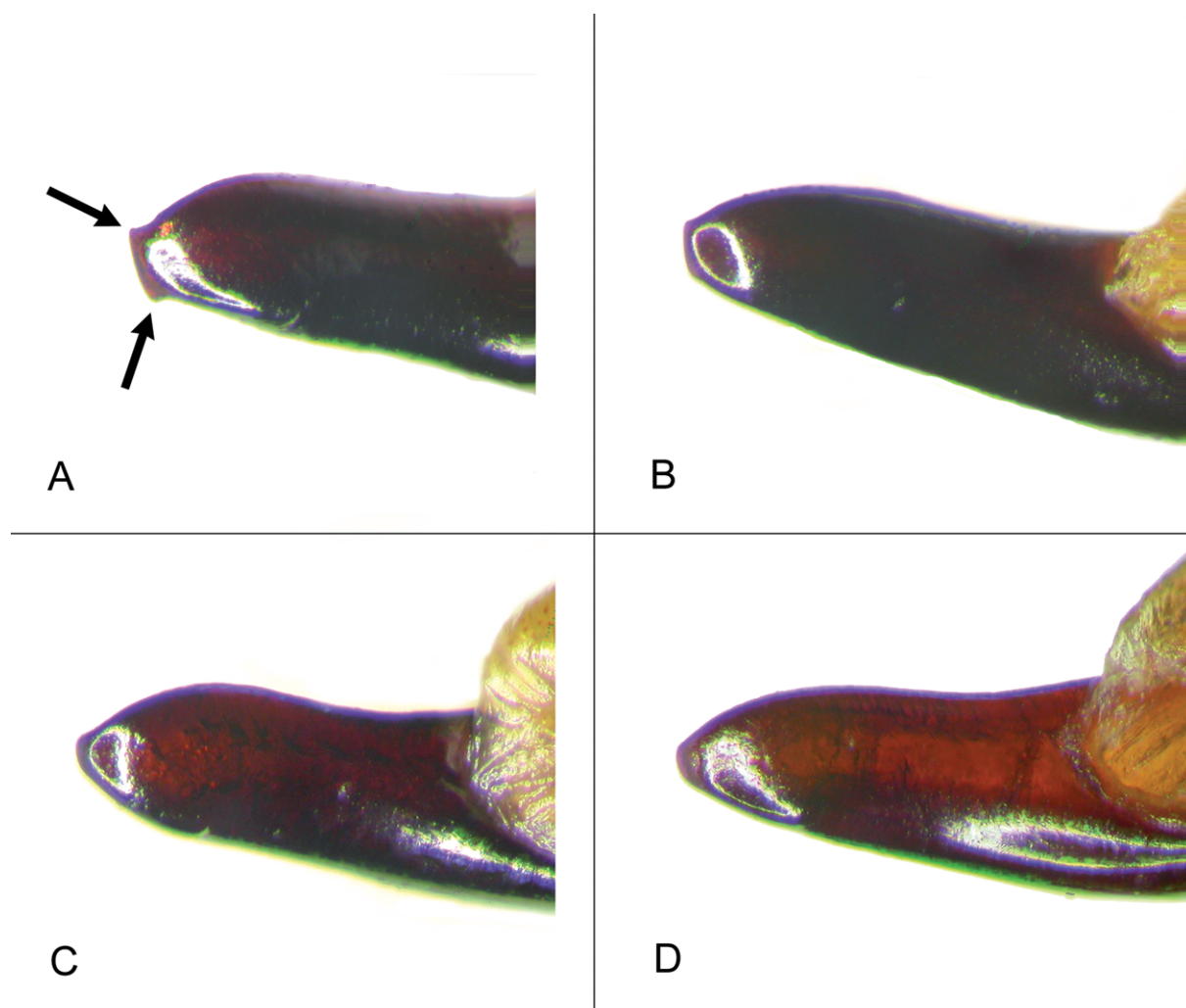


Fig. 5. Median lobe apex of the aedeagus in some subspecies of *Abax parallelepipedus*: A) *parallelepipedus* from Foret de Montecot, France (the arrows mark the angles delimiting the truncation of the tip); B) *inferior* from Falcade (BL), Italy; C) *contractus* from Altare Valbormida (SV) Italy; D) *curtulus* from Sala Berzanga (MO), Italy.

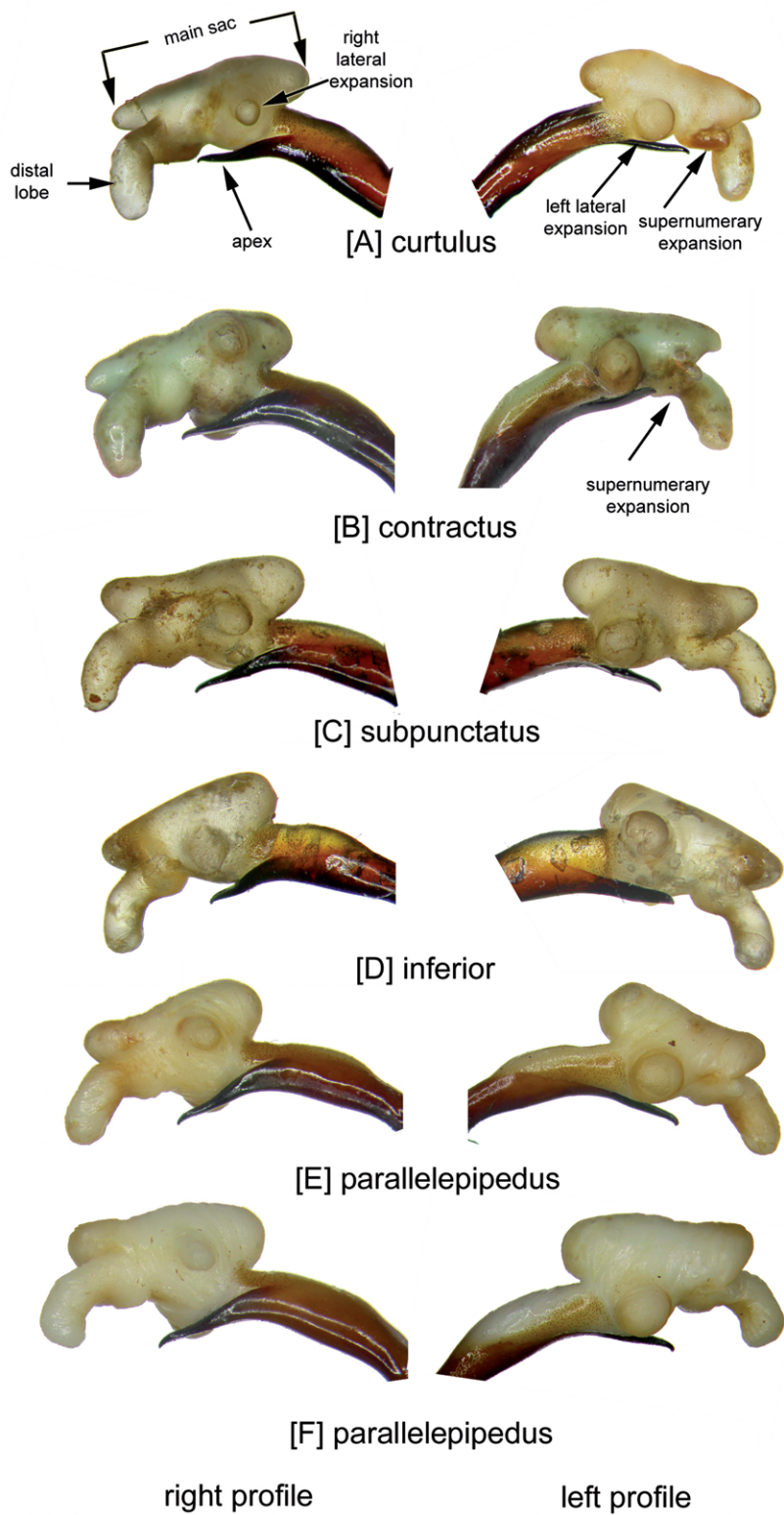


Fig. 6. Male genitalia with everted inner sac sampled from different subspecies of *A. parallelepipedus*: A) *curtulus* from Fanano (MO, Italy); B) *contractus* from Altare Val Bormida (SV, Italy); C) *subpunctatus* from Ravni Dabar (Croatia); D) *inferior* from Falcade (BL, Italy); E) *parallelepipedus* from Bilé Karpaty (Czech Rep.); F) *parallelepipedus* from Ft. d'Ecouve (Orne, France).

MATERIAL EXAMINED: 25 ♀ & 44 ♂.

France: Hautacam (Hautes Pyrénées) 1 ♂; Bois de Lourdes (Hautes Pyrénées) 4 ♀ & 5 ♂; Macaye (Pyrénées-Atlantiques) 1 ♂; Château-Pignon (Pyrénées-Atlantiques) 1 ♀ & 4 ♂; Tarascon (Ariège) 1 ♂; Formigueres (Pyrénées-Orientales) 2 ♂; Spain: Lérida-Pont Aut (Catalonia) 1 ♀ & 1 ♂; Val de Aran (Catalonia) 3 ♂; Ordesa (Aragón, Spain Pyrenees) 5 ♀ & 1 ♂; P.to Echegarrate (Navarra) 2 ♀ & 2 ♂; Peña Cerrada (Navarra) 1 ♀ & 1 ♂; P.to Velate (Navarra) 1 ♀ & 2 ♂; P.to de Urquiola (Biscay) 4 ♂; P.to de San Glorio 4 ♀ & 4 ♂ (Galicia), Espinama (Cantabria) 6 ♀ & 12 ♂.

*Abax parallelepipedus germanus* Schauberger, 1927  
MEAN TL: 18.5 (♂) - 19.1 (♀) mm. PRONOTUM: Inner basal foveae short and never reaching the thickened basal margin. ELYTRA: more elliptical than the typical form according to Schauberger (1927). AEDEAGUS: apex shorter and broader, always with marked angular expansion along the right side according to Schauberger (idem). DISTRIBUTION: The most constant differential character was the short inner foveae, observed in specimens from Germany, Denmark, France, Switzerland, Austria, Czech Republic and Slovakia.

REMARKS: No relevant and constant differential traits were observed on the aedeagus (Fig. 2K-O). This taxon has been considered by some authors (Kofler, 2005) as a junior synonym of the nominotypical form.

MATERIAL EXAMINED: 13 ♀ & 26 ♂.

Denmark: Svejbaek 3 ♂; Germany: Kassel (Nordhausen) 2 ♂; Weilburg (Hessen) 1 ♂; Kubach (Hessen) 1 ♂; Czech Rep.: Schneekoppe (Trutnov distr.) 1 ♀; Žilina (Kladno distr.) 1 ♀ & 1 ♂; Loučeň (Nymburk distr.) 1 ♀ & 4 ♂; Rozkoš (Znojmo distr.) 1 ♂; Dobrá (Stožec distr.) 1 ♂; Slovakia: Riaba skala (Humenné distr.) 1 ♂; France: ft. Saint-Germain-en-Laye (Yvelines dept.) 1 ♂; Fontainebleau (Seine-et-Marne dept.) 2 ♀ & 2 ♂; Vichy (Auvergne dept.) 1 ♀; Puy de Dôme (Auvergne dept.) 1 ♂; Switzerland: Bottmingen (Arlesheim dist.) 2 ♀ & 1 ♂; Blauen (Laufen distr.) 4 ♀ & 2 ♂; Stockhorn (Niedersimmenthal distr.) 1 ♂; Rolle (Nyon distr.) 1 ♂; Pissevache (Martigny distr.) 1 ♂; Austria: Volders (Tirol) 1 ♀ & 1 ♂.

*Abax parallelepipedus subpunctatus* (Dejean, 1828)  
MEAN TL: 20.1 (♂) - 20.6 (♀) mm. PRONOTUM: inner basal foveae elongated and sometimes reaching the

basal margin (Fig. 7B). ELYTRA: striae almost always unpunctured. AEDEAGUS: apex not significantly different from the nominotypical form, although with a strong angular expansion (Fig. 2P-T). Apex tip is truncated but sometimes delimited by blunt angles. DISTRIBUTION: Italian Karst, part of Styria, Slovenia and Croatia. Its distribution remains undefined in the eastern Dinaric Alps and surrounding regions.

MATERIAL EXAMINED: 42 ♀ & 63 ♂ (some ex-Yugoslavia localities are followed by their Italian name recurring in the literature earlier than 1945)

Austria: Graz 1 ♂; Italy: Piano d'Arta (UD) 1 ♀; Malchina (TS) 1 ♂; Sistiana (TS) 1 ♀ & 2 ♂; Grotta Noè - Aurisina (TS) 1 ♀; Grotta dell'Alce - Gabrovizza (TS) 1 ♀ & 4 ♂; Colludrozza (TS) 2 ♀ & 2 ♂; Basovizza (TS) 1 ♂; Slovenia: Radoha 4 ♂; Mt. Ljubnik-Škofja Loka 1 ♂; Trnovski gozd-Selva di Tarnova 1 ♀ & 10 ♂; Mount Nanos 1 ♂; Slivnika-M.te delle Streghe 1 ♂; Praewold-Prevallo 1 ♀; Veliko Gradišče-M.te Castellaro 3 ♂; Zidovonik Sežana-M.te Murato 2 ♀ & 1 ♂; Monte Hemana 1 ♀ & 1 ♂; Postojna-Postumia 7 ♀ & 1 ♂; Montpreis, Planina pri Sevnici 1 ♀; Divača-Divaccia 1 ♀ & 1 ♂; Vremščica-M.te Auremiano 1 ♀ & 1 ♂; Lipica-Lipizza 1 ♀; Rodik-Roditti 2 ♂; Schneeberg - M. Nevoso 1 ♂; Snežnik-M. Nevoso 2 ♀ & 3 ♂; Croatia: Mount Ucka-Monte Maggiore 3 ♀ & 3 ♂; Stolac (Velebit) 2 ♀; Ravni Dabar (Gospic Velebit) 8 ♀ & 9 ♂; Rijeka-Fiume 3 ♀ & 4 ♂.

Intermediate form to ssp. inferior: Italy: Musi (UD) 2 ♀ & 5 ♂

*Abax parallelepipedus alpigradus* Schauberger, 1927 (*sensu* Schatzmayr)

MEAN TL: 17.5 (♂) - 17.2 (♀) mm. PRONOTUM: very variable in shape, as also occurs in *inferior*, sides sometimes similar to the typical *parallelepipedus* and other times slightly rounded. AEDEAGUS: apex lacks the angular expansion along the right side (Fig. 3A-C), resulting as very similar to *inferior* even if the shape is less slender. DISTRIBUTION: The studied population is distributed along the Italian-Austrian border and is surrounded by *subpunctatus* to the east, *inferior* to the south and southwest, and the nominotypical form to the west and northwest.

REMARKS: Schauberger (1927) described this form from some localities of the upper Austria. Unfortunately, it was possible to examine only specimens from Carinthia determined as *alpigradus* by Schatz-



mayr (collection of the Natural History Museum of Milan) and material from the Carnic and Julian Alps (collection of the Natural History Museum of Venice). None of these specimens were from the type localities indicated by Schaubberger.

MATERIAL EXAMINED: 13 ♀ & 24 ♂

Austria: Bad Gastein (Salzburg) 4 ♂; Dobratsch (Carinthia) 1 ♀ & 1 ♂; Graz (Styria) 2 ♂; Italy: Forcella Lavardet (BL) 3 ♀ & 1 ♂; Collina (UD) 1 ♀; Timau (UD) 2 ♀ & 5 ♂; Passo di Pura (UD) 1 ♀ & 2 ♂; Ampezzo (UD) 2 ♂; Musi (UD) 1 ♀ & 2 ♂; Passo Tanamea (UD) 1 ♂; Mount Starmaz (UD) 1 ♂; Debellis (UD) 1 ♀ & 1 ♂; Mount Bernadia (Tarcento, UD) 1 ♀; Mount Peralba (BL) 2 ♀ and 2 ♂.

*Abax parallelepipedus inferior* (Seidlitz, 1887)

MEAN TL: 18.0 (♂) – 18.3 (♀) mm. HEAD: thin transverse wrinkles are scarce and generally confined between the eye furrows. PRONOTUM: sides almost straight (most frequent) or slightly rounded between the maximum width and hind angles. Inner basal foveae often reach the basal margin. ELYTRA: striae variable in depth in males and often very finely punctured. AEDEAGUS: apex slender, without angular expansion on the right margin (Fig. 3D-H), although this can be faintly present in some local populations (Fig. 3G). Apex tip with narrow truncation delimited by blunt angles (Fig. 5B). DISTRIBUTION: NE Italy, from Friuli Venezia Giulia to the western borders of Veneto (excepting the province of Verona and part of the province of Vicenza) and Trentino Alto Adige.

REMARKS: Since the Seidlitz's description does not provide useful diagnostic characters, this study was based on morphological traits (mainly of the male genitalia) and geographical range reported by later authors (Schaubberger, 1927; Schatzmayr, 1944; Magistretti, 1965). Some diagnostic characters suggested by Fiori (1896) and Porta (1903) were not confirmed on the material examined.

MATERIAL EXAMINED: 51 ♀ & 102 ♂.

Austria: Kalkstein (Tirol) 1 ♀ & 2 ♂; Italy: Prato della Drava (BZ) 1 ♀ & 1 ♂; Villabassa (BZ) 16 ♀ & 32 ♂; Sesto (BZ) 1 ♂; Lago di Braies (BZ) 1 ♀; Sarentino (BZ) 1 ♂; Gleno (BZ) 2 ♂; Favogna (BZ) 1 ♀; Val di Genova (TN) 1 ♂; Lavarone (TN) 1 ♀; Asiago (VI) 2 ♂; Val Digion (BL) 1 ♂; Cima Sappada (BL) 1 ♂; Cadore (VI) 1 ♂; Cortina (BL) 1 ♂; P.sso Giau (BL) 1 ♀ & 1 ♂; San Vito in Cadore 1 ♀ & 1 ♂; Auronzo (BL) 3 ♂; Lorenzago (BL) 1 ♀ & 3 ♂; Falcade

(BL) 6 ♀ & 8 ♂; Alleghe (BL) 2 ♀ & 4 ♂; Forno di Zoldo (BL) 1 ♂; Rif. Vazzoler (Col Negro di Pelsa, BL) 1 ♂; Longarone (BL) 1 ♂; Pieve d'Alpago (BL) 2 ♀ & 2 ♂; Monte Cavallo (BL) 2 ♀ & 1 ♂; Pian Cansiglio (BL) 1 ♂; Monte Pizzoc (TV) 1 ♂; Valsalega (TV) 1 ♀; San Pietro di Barbozza (Valdobbiadene, TV) 7 ♀ & 10 ♂; Santa Maria di Feletto (TV) 1 ♀ & 1 ♂; San Michele di Feletto (TV) 1 ♂; Seren del Grappa (BL) 2 ♂; Monte Grappa 5 ♀ & 7 ♂; Ciano (TV) 1 ♀; Montello (TV) 2 ♂; Monte Raut (PN) 4 ♂. Intermediate form to ssp. *lombardus*: Passo Xomo (Posina, VI) 1 ♂; Pian delle Fugazze (TN) 1 ♂.

*Abax parallelepipedus lombardus* A. Fiori, 1896

MEAN TL: 18.4 (♂) and 18.6 (♀) mm. HEAD: frons almost lacking fine transversal wrinkles. PRONOTUM: broad, disc more convex (Fig. 7C), sides often slightly rounded between the middle and the hind angles, inner basal fovea sharply separated from the outer one. AEDEAGUS: apex definitely longer than 1 mm and less broad than in the typical form (Fig. 3I-O), moderately sinuous along the left margin, as in the accentuated case shown in Fig. 3I. Apex tip roughly pointed or very narrowly truncated. Angular expansion along the right margin of the apex present in populations occurring to the west of Lake Garda (Fig. 3I-M), sometimes assuming the appearance of a small tooth, whereas it tends to decrease gradually until it disappears in the eastern populations (Fig. 6N-O). DISTRIBUTION: from Monti Lessini (western Veneto region) to Lake Maggiore and Canton of Ticino.

REMARKS: Populations from Monte Baldo, Monte Pasubio and Monti Lessini almost lack the angular expansion at the aedeagus apex and often show a slight reduction in body size. The pronotum is less broad and with sides less rounded. These traits led some authors (e.g. Magistretti, 1965) to interpret them as extreme morphotypes of *inferior*. I have interpreted them as *lombardus* because of the following characters that I consider very typical of this subspecies: convex pronotal disc and inner basal foveae well separated from the outer ones; aedeagus apex sinuous along the left side. However, since these mountains are at the eastern limit of its distribution, the presence of *inferior* cannot be excluded in some localities. The simultaneous presence (presumably in different localities) of these two subspecies recorded by Luigioni (1929: 128) at Monti Lessini is therefore plausible.

Interestingly, specimens with external characters typ-

ical of *lombardus*, but with aedeagus apex lacking sinusity along the left margin, were recorded from Valtellina and other localities in the province of Sondrio. It is possible that these specimens are intermediate form to *germanus*, which occurs in Switzerland and perhaps in some Italian border localities.

MATERIAL EXAMINED: 29 ♀ & 52 ♂.

Italy: Maccagno (VA) 1 ♀; Campo dei Fiori (VA) 2 ♀

& 2 ♂; Gaggiolo (VA) 4 ♂; Monte Generoso (CO) 1 ♂; San Primo (CO) 1 ♀ & 3 ♂; Primaluna Valsassina (LC) 1 ♀; Valsassina (LC) 2 ♀; Pian di Bobbio (LC) 1 ♂; Piani Resinelli (LC) 3 ♂; Bus del Buter (Caprino Bergamasco, BG) 1 ♂; Valmalenco (SO) 1 ♂; Piazzatorre (BG) 1 ♀ & 5 ♂; Pizzo Arera (BG) 1 ♂; Castione della Presolana (BG) 4 ♀ & 4 ♂; Onore (BG) 2 ♀ & 4 ♂; Passo Vivione (BG) 1 ♀ & 1 ♂; San Colombano

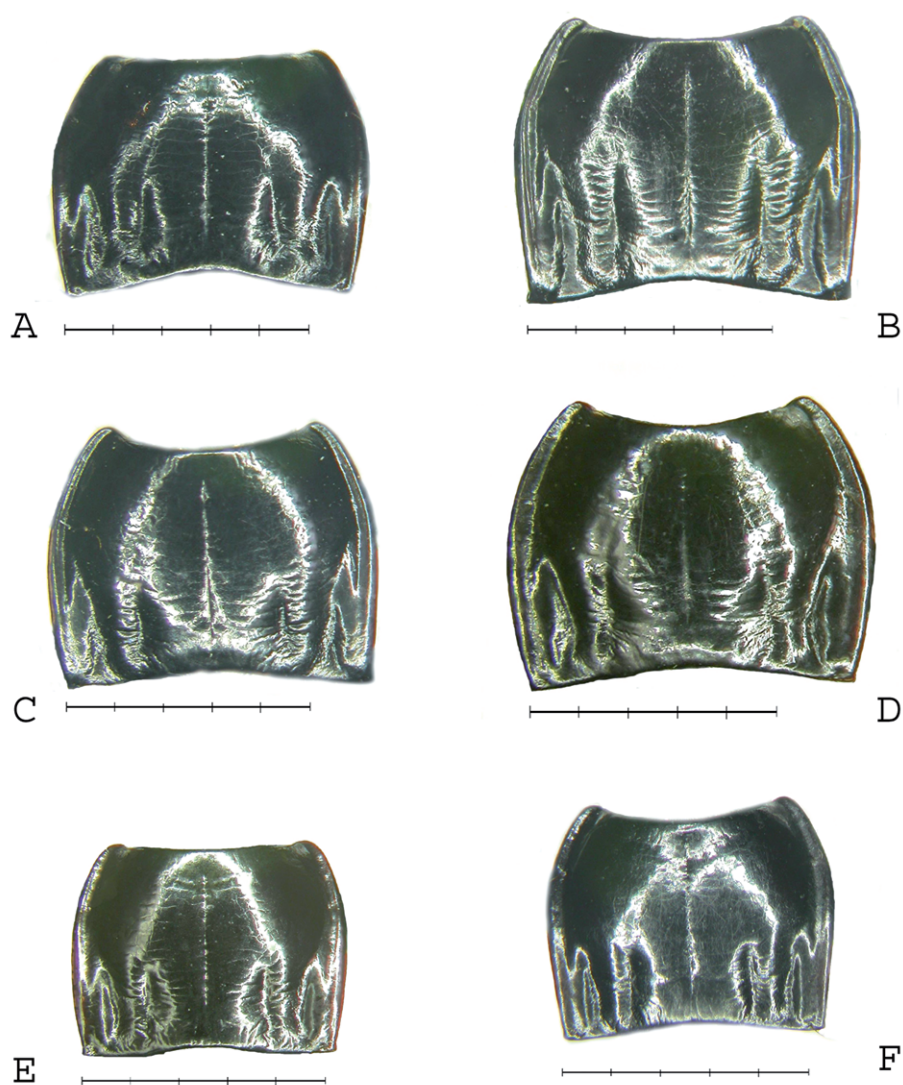


Fig. 7. Pronotum of some subspecies of *Abax parallelepipedus* (males): A) *parallelepipedus* [Montecot (F)]; B) *subpunctatus* [Ravni Dabar (HR)]; C) *lombardus* [Onore, BG (IT)]; D) *euganensis* [Castelnuovo, PD (IT)]; E) *curtulus* [La Trappola, AR (IT)]; F) *contractus* [Altare Valbormida, SV (IT)]. Sample scale: 5 mm.

(MI) 2 ♂; Monte Pizzoccolo (BS) 1 ♀; Fabrezza (BS) 1 ♀; Passo Croce Domini (BS) 2 ♀; Monte Baldo loc. Naole (VR) 1 ♀ & 1 ♂; Monte Baldo loc. Dossioli (VR) 2 ♀ & 5 ♂; Ferrara di Monte Baldo (VR) 1 ♂; Monti Lessini (Spiazzi, VR) 1 ♂; Cavalò di Fumane (Valpolicella, VR) 1 ♂; Pigozzo (Val Squaranto, VR) 1 ♀; Zevio (VR) 1 ♀ & 1 ♂; Monti Lessini – grotta Spluga Carpenè (San Mauro di Saline, VR) 2 ♂; Valdagno (VI) 2 ♀ & 4 ♂.

Intermediate form to ssp. *germanus*: Alpe Musella (SO) 1 ♂; Ardenno (SO) 1 ♀; Sondrio 1 ♀ & 1 ♂.

Intermediate form to ssp. *inferior*: Monte Pasubio (Pian delle Fugazze, Vallarsa, TN) 1 ♀ & 1 ♂.

***Abax parallelepipedus euganensis*** Schatzmayr, 1944  
 MEAN TL: 19.1 (♂) - 19.2 (♀) mm. PRONOTUM: transverse and very stout, sometimes with sides weakly but regularly rounded (Fig. 5D). Disc less convex than in *lombardus* but more than in typical *parallelepipedus*. ELYTRA: proportionally broader and markedly parallel-side shaped. In males, interstriae almost flat even if this character is quite variable and not completely fixed. AEDEAGUS: apex slender and definitely longer than 1 mm, apical tip roughly pointed; left side less sinuous than in *lombardus* and angular expansion always lacking along the right side (Fig. 3P-T). In most differentiated specimens, the aedeagus apex is narrow at the basal tract and enlarges at the terminal section (Fig. 3Q). DISTRIBUTION: endemic to the Euganean Hills (where the most differentiated form is observed) and Berici Hills, volcanic hills that rise to heights of 300 to 600 m from the Veneto plain, in the provinces of Padua and Vicenza respectively.

REMARKS: It generally occurs in chestnut woods, in fresh and moist clearings or close to small bodies of stagnant or running water, although some findings were also recorded in meadows and cultivated fields (Ratti *et al.*, 1998).

MATERIAL EXAMINED: 50 ♀ & 38 ♂.

Italy. Colli Berici (VI): Arcugnano (grotta Spruggia dei Cavani) 11 ♀ & 3 ♂; Lago di Fimon 2 ♂; Lonigo 3 ♀ & 3 ♂; Lugugnano 6 ♂. Colli Euganei (PD): Baone (Val di Spin) 1 ♀; Castelnuovo 1 ♂; Monte Calbarina 1 ♀; Monte Ceva 1 ♀; Monte delle Are 5 ♀; Monte della Madonna 1 ♀ & 1 ♂; Monte Pendice 2 ♀; Monte Rua 12 ♀ & 6 ♂; Rocca Pendente (Teolo) 2 ♀; Schivanoia (Teolo) 1 ♀ & 5 ♂; Teolo 1 ♀; Torreglia 3 ♀ & 4 ♂; Torreglia (Lago) 1 ♀ & 1 ♂; Tor-

reglia (Roccolo) 1 ♀ & 1 ♂; Valnogaredo 1 ♀; Valanzibio 2 ♂; Villa di Teolo 3 ♀ & 3 ♂.

***Abax parallelepipedus contractus*** (Heer, 1841)

MEAN TL: 17.9 (♂) - 18.3 (♀) mm. HEAD: fine transversal wrinkles almost completely lacking. PRONOTUM: smaller than the nominotypical form. Fine transversal wrinkles on the disc almost completely lacking. Base narrow (Fig. 7F). ELYTRA: more oval than the nominotypical form, base narrower. AEDEAGUS: apex less robust, weak angular expansion along the right side (Fig. 4A-E), tip narrowly truncated or roughly pointed (Fig. 5C). Inner sac generally with a small supernumerary expansion at the base of the distal lobe (Fig. 6B). DISTRIBUTION: from southern France to Italy across the Maritime Alps, spreading on the northern Apennines. The distribution of *contractus* remains not fully known; in addition to the localities listed for the material examined, the following are reported in the literature: France – Hautes-Alpes (Forest of Boscodon, near Embrun), French Maritime Alps at Saint-Martin-Vésubie and l'Authion (Jeannel, 1942: 777). Italy – Italian Maritime Alps: Valle Pesio, S. Bartolomeo, Certosa di Pesio, Pian delle Gorre, Monte Besimauda (Bisio *et al.*, 2013); Monte Fronté (Schatzmayr, 1944); Cottian Alps: Colle delle Finestre (TO) (Magrini & Degiovanni, 2013); Northern Apennines until the Apuan Alps, including the reliefs on the southern borders of Piedmont and Lombardy: Voltaggio (AL), Montecapraro (AL), Monte Lesima (PC/PV), Rivazzano (PV), Colle di Nava (IM), Genova, Monte Antola (GE/AL), Monte Penna (GE/PR), Recco (GE), Fontanigorda (GE), Romito (SP) (Magistretti, 1965).

REMARKS: Interestingly, few findings are recorded across the Italian western Alps, so that *contractus* has no or very limited contacts with *lombardus*, which occurs in the Italian central Alps. Among the examined material, Monte Marca (Bielmonte, BI) was the locality closest to the range of *lombardus*. Here, the aedeagus was morphologically different (Fig. 4A) from the typical *contractus* sampled from the Ligurian Apennines (Fig. 4C-E), consistently with the hypothesis of an expansion from the Maritime Alps accompanied by a gradual, though modest, morphological differentiation.

MATERIAL EXAMINED: 40 ♀ & 24 ♂

Italy: Diano Marina (IM) 2 ♀; Altare Val Bormida (SV) 7 ♀ & 3 ♂; Cadibona (SV) 1 ♀; Monte Marca

(VC) 1 ♀ & 1 ♂; Monte San Giorgio (SV) 19 ♀ & 12 ♂; Montenotte (SV) 1 ♂; Molessana (GE) 1 ♀; Monte Chiappo (Cabella Ligure, AL) 4 ♀ & 4 ♂; Monte Colletta (Brallo di Pregola, PV) 1 ♀ & 1 ♂; Passo di Brallo (PV-PC) 3 ♀ & 2 ♂; Levanto (SP) 1 ♀.

***Abax parallelepipedus curtulus*** (Fairmaire, 1856)

MEAN TL: 17.3 (♂) - 17.5 (♀) mm. HEAD: fine transversal wrinkles almost completely lacking. PRONOTUM: smaller than the nominotypical form. Base narrow, but proportionally less than in *contractus*. Fine transversal wrinkles on the disc almost completely lacking. ELYTRA: more oval as a consequence of their narrower basal margin. AEDEAGUS: apex less robust than in other subspecies; quite variable in shape (Fig. 4F-J), generally weakly restricted from base to tip. Tip roughly pointed (Fig. 5D). In southern populations the apex can be more slender and sinuous as shown in Fig. 4I. Angular expansion generally present along the right side. Inner sac of aedeagus generally with a small supernumerary expansion at the base of the distal lobe (Fig. 6A). DISTRIBUTION: along the Apennines from Emilia Romagna to Calabria, including the reliefs on Gargano (Puglia region).

MATERIAL EXAMINED: 39 ♀ & 46 ♂.

Italy: Ponte Samone-Guiglia (MO) 1 ♂; Zocca (MO) 2 ♀; Montese (MO) 2 ♀; Fanano (MO) 2 ♀ & 1 ♂; Capanno Tassoni (Fanano, MO) 1 ♂; Boschi di Carrega (Sala Baganza, PR) 1 ♀ & 1 ♂; Campigna (FC) 2 ♀ & 3 ♂; Taviano (PT) 1 ♂; Passo della Futa (FI) 1 ♂; Popolano (FI) 2 ♀; Sesto Fiorentino (FI) 2 ♂; Borselli (FI) 2 ♀ & 2 ♂; Vallombrosa (FI) 1 ♀ & 2 ♂; Camaldoli (AR) 3 ♀ & 4 ♂; La Trappola (AR) 1 ♂; Monti Sibillini - Sorgenti Fargno (MC) 1 ♀; M. dei Fiori? (AP/TE) 1 ♂; La Majella - Scanno (AQ) 1 ♂; loc. Prato Rosso (Pescasseroli, AQ) 2 ♀; Monte Marsicano (AQ) 1 ♀ & 1 ♂; Forca d'Acero (Opi, AQ) 2 ♀ & 1 ♂; Parco d'Abruzzo - M.te Difesa 1 ♀; Rifreddo (RM) 1 ♀ & 4 ♂; Monte Gargano (FG) 3 ♀; Monte Vulture (PZ) 1 ♀ & 1 ♂; Monte Viggiano (PZ) 2 ♂; Monte della Madonna (Viggiano, PZ) 2 ♀; Monte Sirino (PZ) 1 ♀ & 2 ♂; Lago della Duglia (Parco del Pollino, PZ) 5 ♀ & 10 ♂; Camigliatello Silano (CS) 2 ♀ & 3 ♂.

**MORPHOMETRICS**

A synthesis of the mean biometric data is shown in Fig. 8. The TL resulted as very variable and the subspecific subsets are shown in Fig. 8A,B in

order of increasing size. As predictable, other biometric variables ranged consistently with the TL, leading to similar size ranking (Fig. 8C-L). Interestingly, *parallelepipedus* occupies a quite central position in the biometric ranges of all the considered variables. Besides, despite some exceptions, the ssp. *inferior*, *germanus*, *lombardus* and *audouini* resulted as statistically homogeneous with the nominotypical taxon. Considering this “central” group, therefore, the biometric variability does not seem to reveal any oriented differentiating process among the sampled populations, but rather a random morphological variation. This would be consistent with the predictions of the IBD model proposed by Wright (1943), according to which a random selection of traits occurs among semi-isolated subpopulations with short dispersal capacity inhabiting a large territory. However, considering the groups at the extremes of biometric ranges, it is possible to spot some well-oriented diverging trends.

Among the largest subspecies, the statistical analysis attests that *euganensis* and *subpunctatus* constantly show higher biometric values than the group homogeneous with *parallelepipedus*. Interestingly, the body width variables are very similar in *euganensis* and *subpunctatus* (Fig. 8C-L), despite this latter having a significantly higher TL (Fig. 8A,B). This suggests that *euganensis* tends to increase the body width more than its length, especially enhancing the transversal shape of the pronotum (Fig. 8C,D).

Analogously, among the small subspecies, *contractus* and *curtulus* show a remarkable reduction in width of the elytral base, as well of the pronotum base (Fig. 8E-H). The same trend is observed for the maximum width of both these body regions (Fig. 8C,D,I,L), but in less relevant measure. This means that, in *contractus-curtulus*, the shape of the pronotum and elytra tend to become proportionally narrower at their bases, besides being definitely smaller.

*A. p. alpigradus* shows biometric values similar to *contractus-curtulus*, but has pronotal and elytral bases wider, especially in males.

The morphometric indexes, which are affected by the variations of proportional ratios among the biometric variables rather than by their change in absolute value, confirmed the changes in body shape above described. These indexes (Fig. 9) show a much broader statistical homogeneity among groups than the biometric variables, attesting that change in size often does not correspond to substantial modifications of the

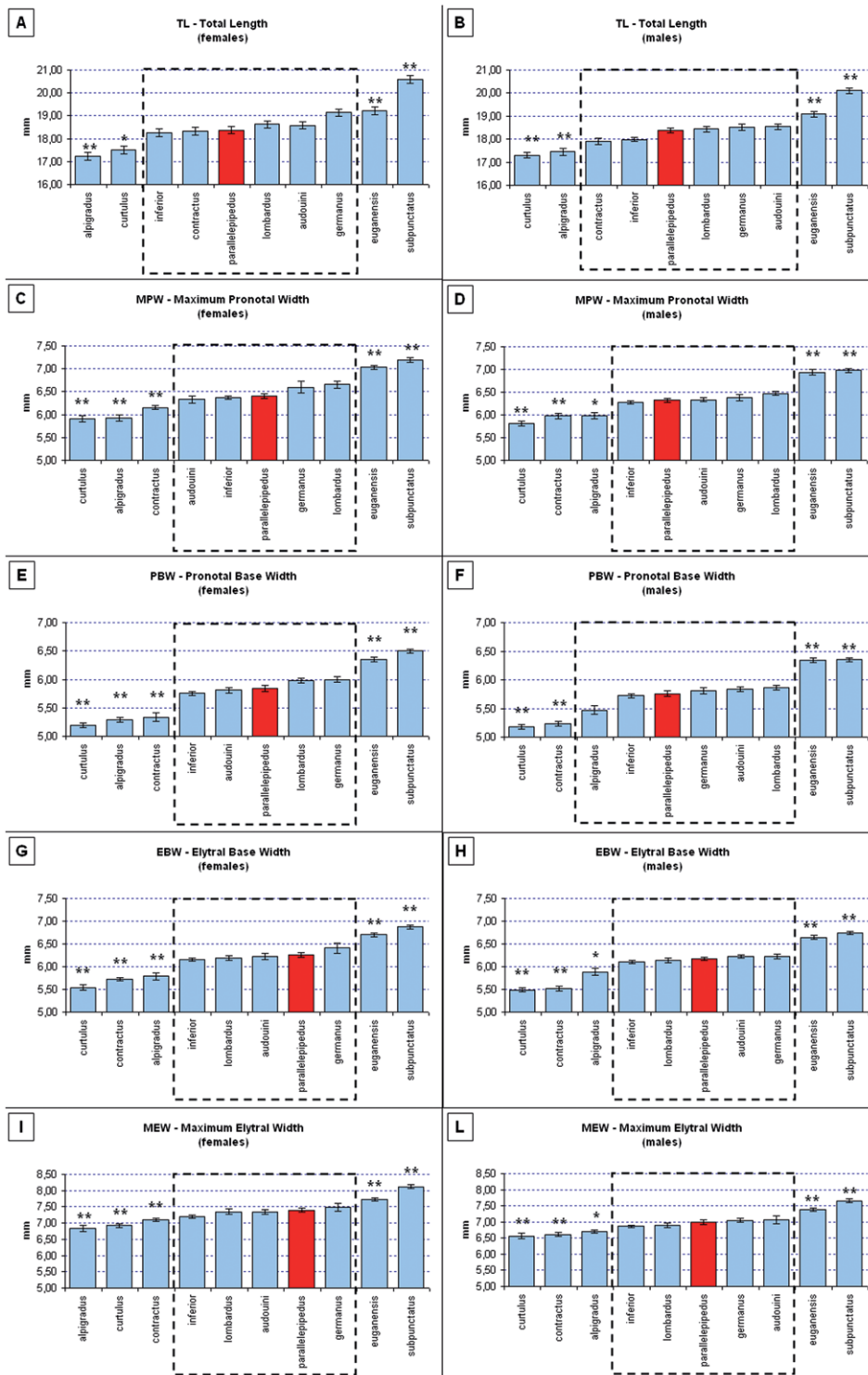


Fig. 8. Mean values (with standard error bars) of biometric variables detected in the subspecies of *A. parallelepipedus*. The histograms grouped by the dashed line are statistically homogenous with the nominotypical subspecies according to the Games-Howell test, while the asterisks mark the histograms statistically different (\* $P < 0.05$ ; \*\* $P < 0.01$ ).

body shape. For instance, *alpigradus* and *subpunctatus*, despite being placed at the opposite extremes in several variable ranges, are both constantly homogeneous with the nominotypical subspecies when analysed by means of the indexes. However, consistently with the interpretations proposed for the biometric data, the morphometric indexes attest that *euganensis* and the pair *curtulus-contractus* are the subspecies most differentiated from the typical *parallelepipedus*.

In *euganensis*, pronotum becomes more transverse (Fig. 9A,B) and elytra tend to enlarge in respect to their length, especially in females (Fig. 9E,F). The elytral ratio between maximum width and base (ERI) is also reduced (Fig. 9G,H), enhancing the parallel-sided shape of the body. As a result, *euganensis* has a decidedly broader shape than *parallelepipedus*, enlarging the pronotum more than the elytra.

On the contrary, *curtulus* and *contractus* show a pronotum that not only becomes proportionally smaller, but also less transverse, assuming an appearance that is reminiscent of the genus *Pterostichus*. This trend is shared between these two subspecies as highlighted by the decrease of their PWI in comparison to *parallelepipedus* (Fig. 9A,B), although this morphological differentiation does not assume statistical significance according to the Games-Howell test, which is very conservative. Furthermore, especially in *contractus*, pronotum base narrows more than the maximum width, so increasing the PRI (Fig. 9C,D). Analogously, both *contractus* and *curtulus* show an increased ERI, attesting to the trend of elytra to develop more oval sides (Fig. 9G,H).

Therefore, interestingly, the pair *contractus-curtulus* share similar changes of both size and body shape, evolving in a direction diametrically opposed to that observed in *euganensis*.

The other subspecies, despite the variation in size pointed out by the biometric variables, maintain a body shape substantially similar to the typical *parallelepipedus*, according to the data provided by the morphometric indexes.

## CONCLUSIONS

*Abax parallelepipedus* is a brachypterous species with limited or absent gene flow between geographically distant populations. It is not surprising, therefore, that morphologically differentiated populations are observed in the presence of a very broad dis-

tribution. However, the subspecific taxa described in the literature attest to the difficulty experienced by entomologists in distinguishing between geographical variations and subspecies, defined as evolving populations that represent partially isolated lineages of species (Braby *et al.*, 2012). These latter have the potential to split into new species and, from a systematic point of view, fall within the “grey zone” described by De Queiroz (2007) as a transition phase that a lineage crosses during the process of separation and divergence (speciation). Unfortunately, a lack of standardized criteria for the diagnosis of subspecies makes it very difficult to recognize them within geographical variations and delimit their boundaries (Thorpe, 1987; Braby *et al.*, 2012).

*Abax parallelepipedus* shows a very complex pattern of morphotypes and subspecies that have probably originated both from ecological factors and historical processes. In this study, the geographical variation was evaluated by means of a morphometric approach, adopting statistical methods in order to establish which populations had biometric traits distinct from the nominotypical subspecies. Furthermore, the morphometric results were confirmed and supplemented by studying the morphology of the male genitalia, according to the approach proposed by Ortuño & Arribas (1992) for distinguishing the subspecies of *Abax pyrenaicus* (Dejean, 1828). The data reported here suggest that some populations are actually differentiating from the nominotypical subspecies.

One of the main interferences encountered performing the morphological analyses was due to the relevant variation in size observed. Extreme values of TL were detected in populations having broad distribution, as in the case of *subpunctatus* and *curtulus*, respectively the largest and smallest, but also in small and local populations, as in the case of *alpigradus* (*sensu* Schatzmayr). This latter was clearly differentiated from the surrounding populations on the basis of its small size, but showed somatic proportions consistent with other groups and was substantially assimilated to *inferior* on the basis of the male genitalia morphology. A significant change of TL can actually reveal an adaptive trend, especially when constantly expressed in widespread populations (as in the case of *subpunctatus* and *curtulus*). Nevertheless, given the complex pattern of variation observed for this variable among the sampled populations, it is preferable to leave aside the TL as diagnostic character, focusing on

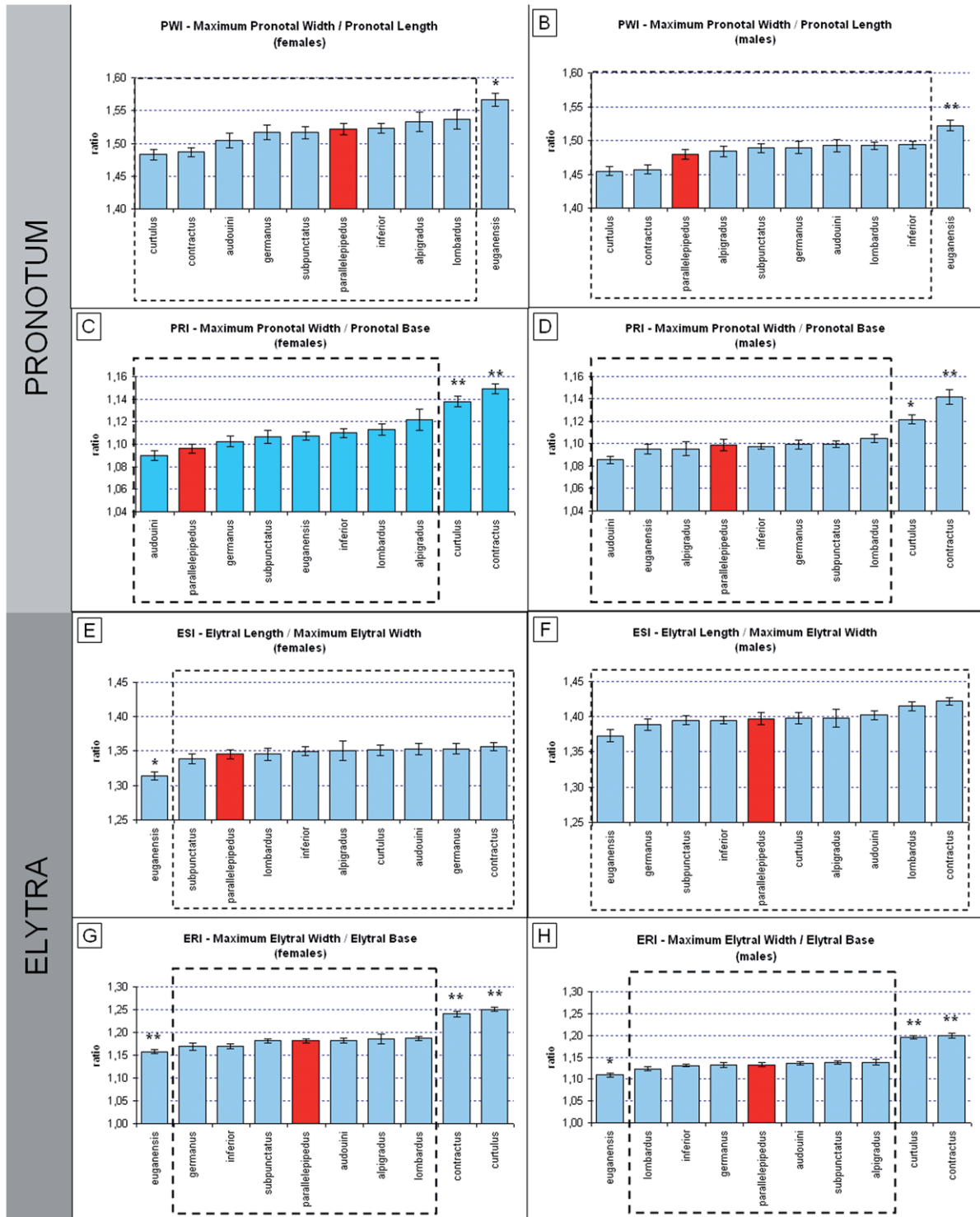


Fig. 9. Mean values (with standard error bars) of the morphometric indexes calculated for the subspecies of *A. parallelepipedus*. The histograms grouped by the dashed line are statistically homogenous with the nominotypical subspecies according to the Games-Howell test, while the asterisks mark the histograms statistically different (\* $P < 0.05$ ; \*\* $P < 0.01$ ).

other biometric variables and above all on the morphometric indexes, which better reveal changes in body shape.

The combined analysis of morphometric data and male genitalia suggest that the populations occurring in central and western Europe (*i.e. subpunctatus*, *germanus* and *audouini*), with the exception of the Italian territory (*i.e. inferior*, *alpigradus sensu* Schatzmayr, *euganensis*, *lombardus*, *contractus* and *curtus*), can be synonymized to the nominotypical subspecies.

The ssp. *germanus* and *audouini* showed a slightly stouter size than the typical *parallelepipedus* (Fig. 8), as indicated by Schauburger (1927) and Jeanneel (1942) respectively, but this character does not induce any relevant variation of the somatic proportions (Fig. 9). According to the observations made in this study, other secondary differential characters of these two taxa, as well as the shape of their aedeagus apex (Fig. 2), also do not support a subspecific status.

An analogous situation was detected for *subpunctatus*, which did not show significantly differentiated traits apart from the large size. Nevertheless, the strong and constant difference in size occurring between *subpunctatus* and the neighbouring Austrian and Italian populations marks a relevant discontinuity. This suggests that this morphotype, although not separable at subspecific level, might be the extreme branch related to the expansion of populations differentiated in eastern Europe and later moving westward along the southern corridor across the Dinaric Alps. However, these hypotheses would require an extensive investigation of eastern populations of *Abax parallelepipedus*, which has not so far been undertaken.

With regard to the aedeagus morphology, a general comment can be proposed for the extra-Italian populations. The apex shape shows a substantial homogeneity, especially in the angular expansion on the right margin (Fig. 2) and truncated tip (Fig. 5A). The stouter morphotypes, *i.e. germanus*, *audouini* and *subpunctatus*, generally have an aedeagus apex with more pronounced angular expansion. Furthermore, the aedeagus of *audouini* generally shows a particularly marked truncation of the apex tip, delimited by sharp angles. Although all these morphological details do allow recognition of local populations, they do not substantially change the aedeagus shape, which falls within the variation of the typical *parallelepipedus*.

All these results make it reasonable to propose

the synonymization of *germanus*, *audouini* and *subpunctatus* with the nominotypical *parallelepipedus*.

Instead, the high morphological variation observed among European populations suggests some interesting biogeographical cues. Among the studied specimens, particular attention should be paid to those from the Czech Republic and Slovakia. Interestingly, specimens from these regions can be externally interpreted as *germanus* or *parallelepipedus* depending on the catch locality and, above all, show a relevant variation of their aedeaga (Fig. 10). As can be observed, the specimen from Žilina (Fig. 10A) has some traits typical of *inferior*, the one from Dobrá (Fig. 10B) has a very robust shape, whereas the one from Rozkos (Fig. 10C) is slender and elongated in a manner similar to specimens of *lombardus* from the province of Sondrio (Italy). However, despite this variation, all these aedeaga have the same tip truncation observed in the nominotypical form.

These external and aedeagic traits, observed in contiguous (parapatric) populations inhabiting the territories indicatively coinciding with Bohemia and Moravia, are separately fixed in some of the main morphotypes classified as nominotypical *parallelepipedus*, *germanus*, *inferior* etc. Considering the geographical distribution of the discussed morphotypes, the most parsimonious hypothesis is that Bohemia and Moravia might be the area of origin from which *A. parallelepipedus* started its geographical diffusion throughout the rest of Europe, where a complex combination of genetic drift, local selective factors and historical events favoured the selection of different morphotypes. The Pleistocene glaciations are probably the driving factor that pushed part of the species towards southern glacial refugia (Iberian Peninsula, Italian Peninsula and Balkans), while some populations survived in central European refugia located in the Carpathians and north of the Alps. The existence of multiple glacial refugia in the north of the Alps has also recently been hypothesized by Homburg *et al.* (2013) to explain the origin of allopatric subspecies of *Carabus irregularis*. Interestingly, the existence of glacial refugia in the Carpathians (Provan & Bennett, 2008; Schmitt, 2009), as well as the role of cryptic northern refugia (Habel *et al.*, 2010; Steward *et al.*, 2010), have recently assumed increasing importance for explaining the biodiversity distribution in Europe.

The alternative hypothesis compatible with the



described scenario instead appears hardly acceptable, as it would require a centripetal migration of differentiated populations from the periphery towards the centre of Europe, with progressive loss of their characteristic traits.

In this context, particular attention should be paid to the populations inhabiting the mountainous territories of Austria. It seems that the expansion of the primitive population with high genetic variability over this mountainous region had produced a mosaic of localized morphotypes, which does not find correspondence in the other mountain systems farther from the potential point of origin of the species diffusion (*e.g.* Swiss Alps, Dinaric Alps, Pyrenees, etc.). Although few specimens were examined, the detected data and information reported in the literature attest to the occurrence of the following subspecies/morphotypes in Austria: *germanus* (Volders, Nordtirol; Fig. 2M) and *inferior* (Kalkstein, Osttirol) in Tyrol; typical *parallelepipedus* (Irschen) and *alpi-gradus* (Dobratch) in Carinthia; again *alpi-gradus* in Salzburg (Bad Gastein), Styria (Graz) and Upper Austria (Schauberger, 1927); finally, *subpunctatus* in Styria (Graz).

Of course these data are inadequate to represent the complicated geonomy of the morphotypes occurring in Austria, nevertheless they point out the relevant effects produced by a limited gene-flow on the high morphological plasticity of *A. parallelepipedus*. It is generally accepted that organisms with low dispersal capacity would be more sensitive to IBD and show stronger effects of geographical barriers on their morphologies (Monsen & Blouin, 2004). The strong impact of physical barriers on the genetics of *A. parallelepipedus* was also detected for modest interruptions of the environmental continuity (Keller *et al.*, 2003a, 2004). Therefore, the discontinuous contiguity of differentiated populations in the Austrian Alps, and the development of subspecies with the increasing distance from the origin of the migration, as recorded in the Italian Alps, are consistent with the selection or genetic drift caused by widespread mountainous barriers.

The map in Fig. 11 gives a concise summary of the comments and ideas proposed so far: it shows the hypothetical routes followed by *Abax parallelepipedus* during its geographical spread throughout Europe (both subspecies and morphotypes are represented).

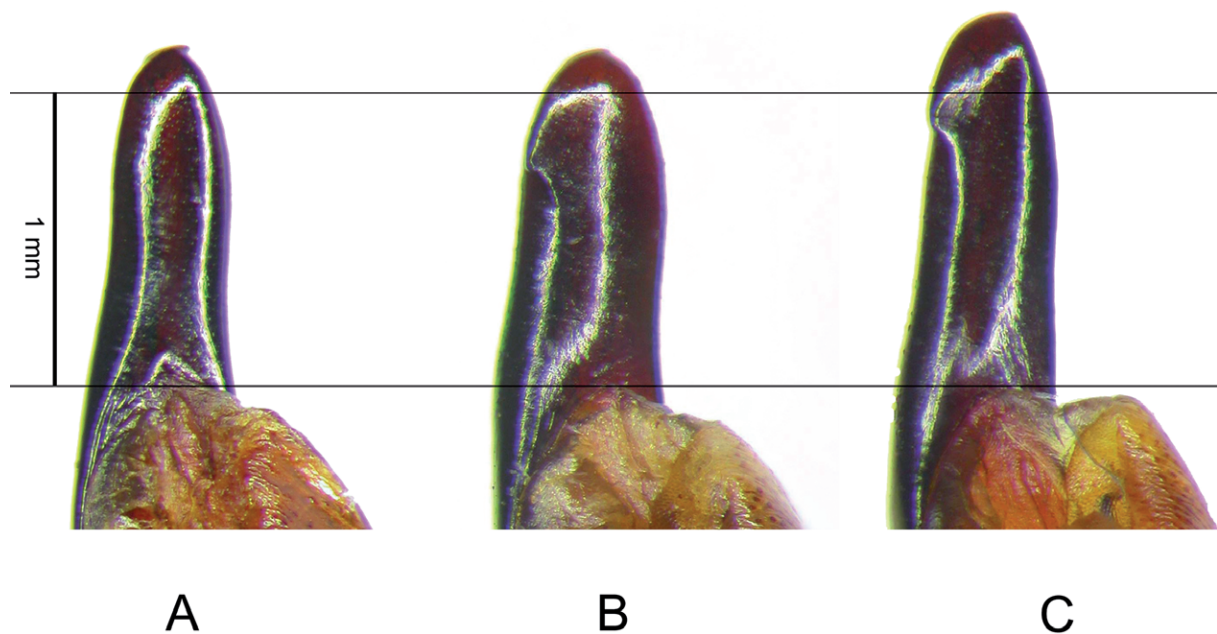


Fig. 10. Three morphological examples of aedeagus apex in specimens from the Czech Republic: A) Žilina (central Bohemia); B) Dobrá (Stozek distr.; southern Bohemia); C) Rozkoš (Moravia).

BIOGEOGRAPHIC REMARKS ON THE ITALIAN SUBSPECIES

It is known that Italy was one of the main refugia for European biota during the Quaternary glaciations (Hewitt, 1996, 2004; Tribsch & Schönswetter, 2003; Schönswetter *et al.*, 2005; Habel *et al.*, 2010) and that the Alps interfered with the northward post-glacial expansions of these peripheral populations (Schmitt, 2009). Taberlet *et al.* (1998) studied the phylogenies of 10 European taxa (plants, mammals, amphibians and arthropods), disclosing that the Italian lineages were often isolated due to the presence of the Alpine barrier, favouring intraspecific polymorphism and the development of endemic lineages. Conclusions consistent with this hypothesis were also reached to explain the morphological and genetic differences

observed in subspecific populations of *Carabus solieri* with transalpine distribution (Garnier *et al.*, 2004). The morphological data discussed in this study seem to confirm the biogeographic role of the Alpine barrier, which would have promoted the independent evolution of the populations of *A. parallelepipedus* migrated over the Alps before and/or between the glaciations.

The main subspecific taxa occurring in the Italian Alps are represented by *inferior* and *lombardus*, while the most eastern morphotype, *A. p. subpunctatus*, remains local to the karst area of Venezia Giulia, only marginally involving the Italian territory. The presence of intermediate forms along the Italian border allow these two subspecies to be put in connection

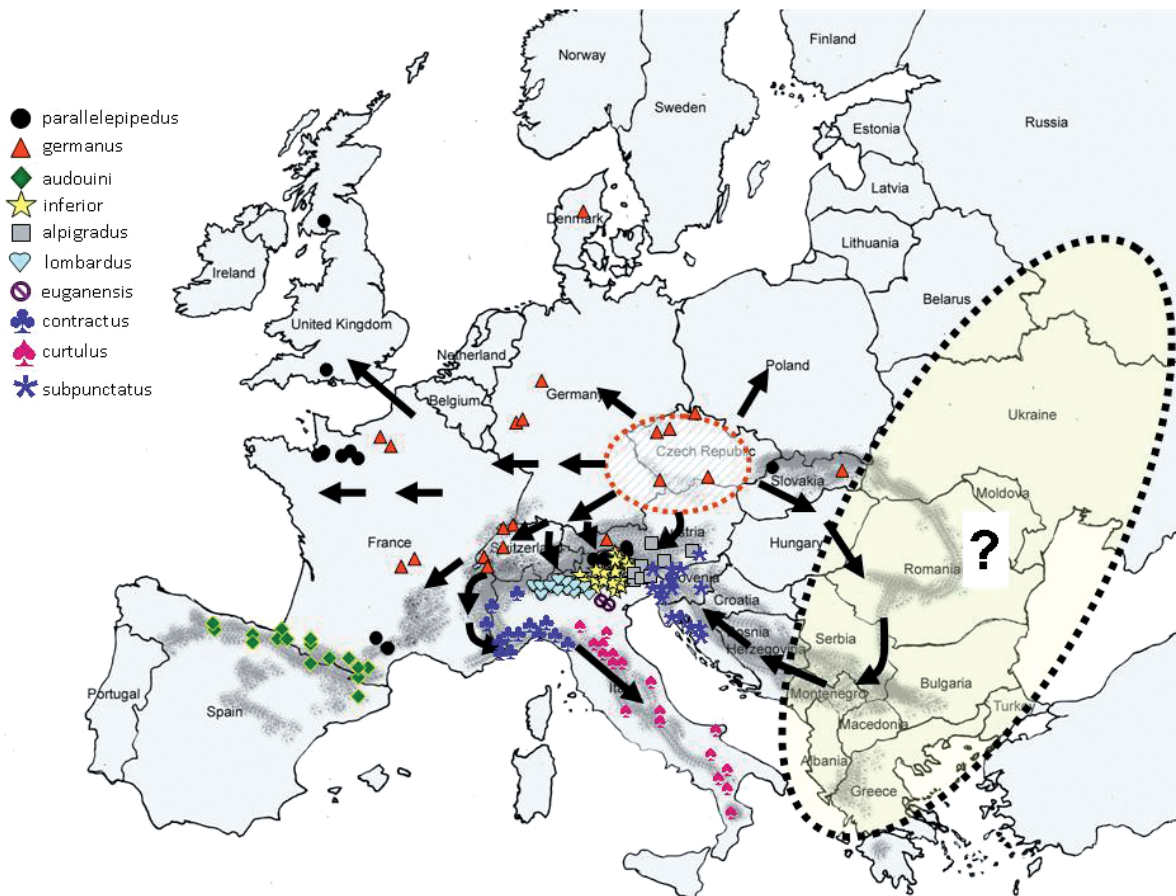


Fig. 11. Localities of provenience (circle marks) of the studied specimens and hypothetical routes followed by the different morphotypes and subspecies of *Abax parallelepipedus* throughout their geographical dispersal. The gray areas indicate the main mountain systems.

with different populations of *parallelepipedus* occurring in the northern side of the Alps. The high variation of *inferior*, especially with regard to pronotum shape, is probably due to genetic contributions of *alpi-gradus* from Carinthia, which is an extreme form of *inferior*, and also of nominotypical *parallelepipedus* and *germanus* from Tyrol. The ssp. *inferior* is therefore a polymorphic group, probably at the early phase of its differentiation process. Its distinctive trait is the slender shape of the aedeagus, lacking the angular expansion on the right side (Fig. 3D-H) but preserving a recognisable truncation of the aedeagic apex, even if narrow and delimited by blunt angles (Fig. 5B). Populations with differentiated morphologies are often localized in Alpine valleys, where they probably remained quite genetically isolated.

The second Alpine taxon, *A. p. lombardus*, occurs in the central Alps and probably differentiated from populations of *germanus* coming from Switzerland, since intermediate specimens were collected on the mountains in the border province of Sondrio. Its distribution is centred on the biogeographic region of “Insubria” connecting the southern side of the European Alps with the Po Plain, which is known for its mild-humid climate, very atypical for an Alpine environment (Pautasso, 2013). It is externally distinguishable from *inferior* and *parallelepipedus* by the more convex pronotum disc. The aedeagus apex is markedly sinuous along the left side (Fig. 3I-O) and ends with a narrowly truncated or almost pointed tip. The aedeagus apex has a marked angular expansion in specimens occurring on the west of Lake Garda, whereas it is almost smooth in specimens from the east of the lake (Monte Baldo, Monti Lessini). This latter form was interpreted as *inferior* by Magistretti (1965), whereas Depoli (1939) proposed the variety *A. p. lombardus lessinicus*.

The relevant morphological variation reported for *inferior* and *lombardus* is consistent with an initial genetic contribution coming from different European populations that crossed the Alpine barrier through spaced points of entrance. However, this scenario also supports the possible genetic isolation experienced by populations survived in restricted Pleistocene refugia during the last glaciations (1.6-0.01 Myr BP). In fact, studies on plant phylogeography hypothesized distinct glacial refugia scattered along the southern margin of the Italian Alps (Tribsch & Schönswetter, 2003; Schönswetter *et al.*, 2005). Interestingly, the Alpine sectors referable to some of these refugia fit quite well

with the distributive pattern reported here for the morphotypes of *inferior* and *lombardus*.

In this context, a special place is occupied by *euganensis*, consisting of populations isolated in the Po Plain. This taxon increased the body width, especially at the pronotum, and developed flattened elytral interstriae in males. The elongated aedeagus apex, with narrow basal tract and absence of angular expansion on the right side, further supports the subspecific status. This subspecies probably split from the population at Monti Lessini, as a consequence of the migrations induced by the glaciations. During the Late Glacial, *i.e.* the interval following the Last Glacial Maximum between 19,000 and 11,500 cal yr BP, the extension of the ice sheet across the southern Alps determined the lowering of the vegetation line. The forests occupied the external belt of the Pre-Alps and adjoining plain (Ravazzi *et al.*, 2007). It can be assumed that *Abax parallelepipedus* spread towards the Po Plain, where there was a predominance of cold-steppe vegetation (Kaltenrieder *et al.*, 2010). At the onset of the Holocene (11,600-11,500 cal yr BP), the rapid climate warming induced a substantial change of the environments on the south of the Alps: thermophilous trees expanded in the lowlands and reached sites below ca 1500 m a.s.l. within a few centuries at most (Vescovi *et al.*, 2007). Furthermore, throughout the postglacial, the forest cover diminished in the lowlands, probably as a consequence of river disturbance on the Po Plain (Kaltenrieder *et al.*, 2010). It may be assumed that this environmental context favoured the isolation of residual populations of *lombardus* in enclaves entrenched on the Berici and Euganean Hills, while the main population progressively moved to the Alps following the retreat of the conifer belt. These isolated hills have maintained peculiar climatic conditions during the last 10,000 years. The Euganean Hills are now considered a xero-thermal oasis that permits the survival of many thermophilous Coleoptera typical of southern Italy (Ratti *et al.*, 1998). It is not surprising, therefore, that these environmental conditions, very different from the cool European forests, have led to the differentiation of *euganensis*.

A completely different history has to be proposed for *contractus*, which cannot be properly considered an Alpine subspecies. This taxon is connected to the European populations through the Maritime and Ligurian Alps, whereas it remains substantially separated from the other populations inhabiting the

central-eastern Italian Alps. The Maritime and Ligurian Alps are considered zones of high biogeographic interest for their role as glacial refugia, biodiversity hotspots and “areas of endemism” (Casazza *et al.* 2008; Szövényi *et al.*, 2009).

*A. p. contractus* might therefore have found here the environmental conditions to differentiate from the nominotypical form. It then spread throughout the northern Apennines, whereas just sparse populations expanded over the western Italian Alps. Starting from the Tuscan-Emilian Apennines, it is substituted by *curtulus*. The phylogenetic relationship between *curtulus* and *contractus* is not disputable, since *curtulus* has no geographical contacts with other populations of *A. parallelepipedus*.

The peculiar differentiation expressed by *contractus-curtulus* substantially diverges from the trends observed in any other population of *A. parallelepipedus*: decrease in size, proportional reduction of pronotum and ovalization of elytra. This is consistent with the hypothesis that glacial refugia located in the Maritime Alps and Apennines led to genetic isolation from conspecific populations inhabiting the Alps, as shown by Labra *et al.* (2006) studying *Pinus sylvestris*. Interestingly, Grassi *et al.* (2009) demonstrated that *Saxifraga callosa*, a plant growing in the same regions as *contractus-curtulus*, shows diverging genetic structure in three major clades, consistent with distinct glacial refugia located in the Maritime Alps, Apuan Alps and Apennines. Furthermore, a study on the genetic clades of the Apennine endemic stream frog *Rana italica* showed that spaced glacial refugia can be hypothesized along the Apennines (Canestrelli *et al.*, 2008). It can therefore be assumed that *contractus* and *curtulus* derived from a common primitive population expanded along the Maritime Alps - Apennines route, then differentiated in distinct refugia during the Quaternary glaciations.

#### NOMENCLATORIAL PROPOSALS

It can be concluded that *Abax parallelepipedus* shows typical European chorology (Vigna Taglianti *et al.*, 1999) and high morphological variation that has led to the development of some populations with traits significantly differentiated from the nominotypical form. These differential characters are generally not distinct enough to justify the status of subspecies, but there are some exceptions among the populations occurring in the Alps and Italian Apennines.

The following new synonymies are proposed:

*Abax parallelepipedus parallelepipedus* (Piller & Mitterpacher, 1783)

= *A. p. subpunctatus* (Dejean, 1828) **syn. nov.**

= *A. p. audouini* (L. Dufour, 1851) **syn. nov.**

= *A. p. germanus* Schaubberger, 1927 **syn. nov.**

*Abax parallelepipedus inferior* (Seidlitz, 1887)

= *A. p. alpigradus* Schaubberger, 1927 (*sensu* Schatzmayr) **syn. nov.**

The resurrection of *A. p. euganensis* Schatzmayr, 1944 from synonymy of *inferior* is also proposed.

These microsystematic arrangements are summed up in the dichotomous key reported below, which should be read bearing in mind that the diagnostic characters are detected statistically and their presence is not constant.

#### KEY TO SUBSPECIES OF *ABAX PARALLELEPIPEDUS*

1. Median lobe of the aedeagus with wider apex (Fig. 2), angular expansion on the right side always present, tip sharply truncated (Fig. 12A). Mean size between 17 and 22 mm. All European countries, only marginally occurring in northern Italy ....*parallelepipedus* (Piller & Mitterpacher, 1783)
- Median lobe of the aedeagus with narrower and variously shaped apex, angular expansion along the right side sometimes lacking (Fig. 12B), tip narrowly truncated or roughly pointed (Fig. 12C,D). Mean size between 17 and 20 mm. Populations occurring in Italy .....2
2. Median lobe of the aedeagus with slender apex and lacking the angular expansion on the right margin (Fig. 12B), this latter can rarely be faintly hinted .....3
- Median lobe of the aedeagus with variously shaped apex but with angular expansion along the right side, sometimes very small.....4
3. Pronotum with more convex disc, median lobe of aedeagus with left side sinuate at apex and tip pointed or very narrowly truncated (Fig. 3N-T). Populations occurring between the east side of Lake Garda and Euganean Hills .....4

- Convexity of pronotum disc as in typical *parallelepipedus*, variably shaped pronotal margins, inner basal foveae often reaching the basal margin. External morphology similar to *parallelepipedus*. Fine transversal wrinkles less dense on head and pronotum. Eastern Alps: Italy (Trentino Alto Adige, Veneto and Friuli Venezia Giulia) and Austria (Ost-Tirol, Carinthia). Populations along the Italian-Austrian border, Carnia and Carinthia, generally smaller in size (morphotype *alpigradus sensu* Schatzmayr).....*inferior* (Seidlitz, 1887)
    - >6.3 mm (min. 5.9 mm; max 7.8 mm) in ♀♀ and >6.2 (min. 5.8 mm; max 7.6 mm) in ♂♂. Elytra more parallel-sided. Populations occurring between the central Alps and Berici and Euganean Hills ...**5**
  - Smaller size. Pronotum narrower, mean maximum width <6.3 mm (min. 5.6 mm; max 6.7 mm) in ♀♀ and <6.2 (min. 5.5 mm; max 6.6 mm) in ♂♂. Elytra more oval. Populations occurring in the Apennines, martime and ligurian Alps, and marginally in the western Alps.....**6**
4. Larger size. Pronotum wider, mean maximum width
5. Pronotum disc more convex, the relief interposed be-

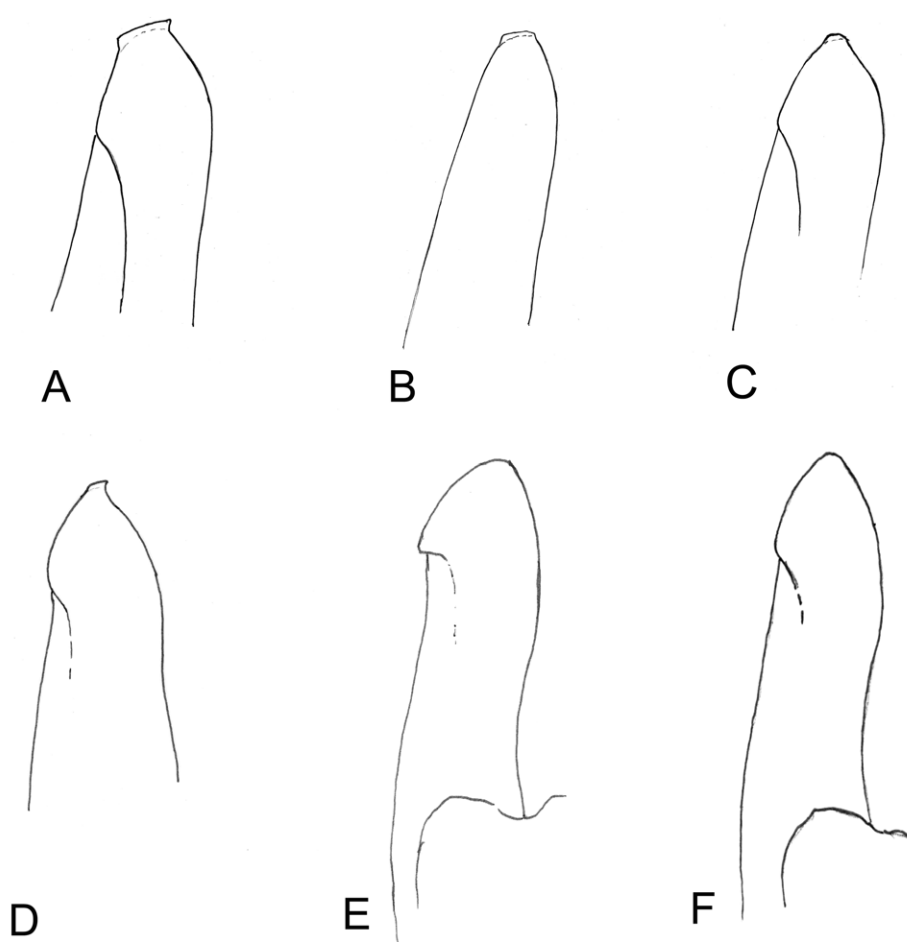


Fig. 12. Aedeagus apex of some subspecies of *Abax parallelepipedus* (aedeaga in figs 12A-D tilted 45° upward): A) typical *parallelepipedus*; B) *inferior*; C) *contractus*; D) *curtulus*; E) *lombardus* (from the west of Lake Garda) F) *lombardus* (from the east of Lake Garda).

tween inner and outer foveae is pronounced along all its length. Median lobe of aedeagus with apex slender and a little more elongated than in *parallelepipedus*, left side moderately sinuous (Fig. 12E; this character often lacking in specimens from the province of Sondrio). Apical tip with narrow truncation delimited by blunt angles or roughly pointed. Apex of median lobe of aedeagus with sharp angular expansion along the right side in specimens from the west of Lake Garda (Fig. 12E), whereas it is almost lacking in those occurring to the east of the lake (Fig. 12F). Canton Ticino, Lombardy, western Veneto (Monte Baldo, Monte Pasubio, Monti Lessini) .....

.....*lombardus* A. Fiori, 1896

- Pronotum more transverse and stouter than *parallelepipedus*, elytral base broad, median lobe of aedeagus with apex slender and definitely exceeding 1 mm in length, almost symmetrical and lacking the angular expansion on the right side. Endemic to Berici and Euganean Hills (Veneto, Italy).....*euganensis* Schatzmayr, 1944

6. Larger size (mean TL 18.3 ♀♀ - 17.9 ♂♂). Pronotum less transverse than *parallelepipedus* and pronotum base proportionally narrower in comparison to its maximum width. Elytra more oval. Median lobe of aedeagus with apex less broad than the typical form, scarcely exceeding 1 mm in length, right side with small angular expansion. Apical tip roughly pointed or with narrow truncation delimited by blunt angles, almost pointed (Fig. 12C). France (Haute-Alpes, Maritime Alps) and Italy (Liguria, Piedmont, Lombard Apennines).....*contractus* (Heer, 1841)

- Smaller size (average TL 17.5 ♀♀ - 17.3 ♂♂). Sim-

ilar to *contractus* but with pronotal base proportionally less narrow. Median lobe of aedeagus with apex less broad than *contractus*, with pointed tip or very narrowly truncated (Fig. 12D). Endemic to Italian Apennines from the south of the Apuan Alps .....

.....*curtulus* (Fairmaire, 1856)

#### ACKNOWLEDGEMENTS

This work was performed with the help of many friends and colleagues. I am grateful to Enrico Ratti for the useful discussions and valuable suggestions and to Marco Uliana (Natural History Museum of Venice) for his critical revision of this document. For their availability and assistance during my visit to museum collections I am indebted to Maurizio Pavese (Natural History Museum of Milan), Emmanuele Piattella (University of Rome “La Sapienza”), Andrea Colla (Natural History Museum of Trieste). For the kind collaboration and some photos of the types in Seidlitz’s collection, a special thank you is addressed to Lars Hendrich (Zoologische Staatssammlung München). Irreplaceable help in my literature search was provided by Giacomo Masato (Natural History Museum of Venice). For sending copies extracted from rare old books, my gratitude is expressed to Brigitte Springmann (Library of the University of Basel) and Jamie Blackman (Auckland Landcare Research Library). My gratitude to friends and other entomologists who provided specimens which I needed for this study, among these I would like to mention in particular Riccardo Poloni (Casinalbo MO, Italy), Claudio Sola (Guiglia MO, Italy) and Charles Robert (Colombiers du Plessis, France). Finally, I thank Alison Garside for her English language revision of this article and two anonymous reviewers whose comments substantially improved the manuscript.

#### REFERENCES

- ANDERSEN T., LIGAARD S., PEDERSEN T., SØLI G.E.E., 1990 - Pitfall catches of Carabidae and Staphylinidae (Coleoptera) in a temporarily protected forest area on the Eidanger Peninsula, Telemark, SE Norway. *Fauna Norvegica Serie B, Norwegian Journal of Entomology*, 37: 13-22.
- BERLOV E., 1992 - Preparati permanenti a secco dell’endofallo nel genere *Carabus* L. (Coleoptera, Carabidae). *Bollettino Società entomologica italiana*, 124: 141-143.
- BISIO L., GIUNTELLI P., ALLEGRO G., 2013 - I Coleotteri Carabidi della Val Pesio (Alpi Liguri) (Coleoptera Carabidae). *Memorie della Società Entomologica Italiana*, 90: 61-87.
- BOUSQUET Y., 2003 - Tribe Pterostichini Bonelli, 1810. pp. 469-521. In LÖBL, I. & SMETANA, A. (eds.), *Catalogue of Palaearctic Coleoptera - Vol. 1: Archostemata-Myxophaga-Adephaga*. Apollo Books, Stenstrup, Denmark, 819 pp.

- BRABY M.F., EASTWOOD R., MURRAY N., 2012 - The subspecies concept in butterflies: has its application in taxonomy and conservation biology outlived its usefulness?. *Biological Journal of the Linnean Society*, 106: 699-716.
- BRANDMAYR P., 1977 - Ricerche etologiche e morfofunzionali sulle cure parentali in Carabidi Pterostichini (Coleoptera, Carabidae: Pterostichini). *Redia*, 60: 275-316.
- BRANDMAYR P., 1978 - Revisione del genere *Abax* Bonelli (Coleoptera, Carabidae) su base morfologica, etologica ed ecologica. In: Atti XI Congresso nazionale italiano di Entomologia, Portici-Sorrento, (10-15. 5. 1976 ), pp. 65-72.
- BRANDMAYR P., ZETTO-BRANDMAYR T., 1979 - The evolution of parental care phenomena in Pterostichine ground beetles with special reference to the genera *Abax* and *Molops* (Col. Carabidae). In: DEN BOER, P.J., THIELE H.-U., WEBER, F., (eds), *On the evolution of behaviour in carabid beetles*. *Miscellaneous Papers Agricultural University of Wageningen*, 18: 35-49.
- BRANDMAYR P., ALGIERI M.C., 1994 - Nuova tecnica di allestimento dell'endofallo membranoso con preparati permanenti sperimentata sul genere *Abax* Bonelli (Coleoptera, Carabidae). In: Atti XVII Congresso Nazionale Italiano di Entomologia, Udine 13-18 giugno 1994, 359-360.
- BRANDMAYR P., ZETTO-BRANDMAYR T., 1994 - The evolutionary history of the genus *Abax* (Coleoptera, Carabidae). In Desender, K. *et al.* (eds.), *Carabid Beetles: Ecology and Evolution*. Series Entomologica, 51: 19-24, Kluwer Academic Publishers.
- CANESTRELLI D., CIMMARUTA R., NASCETTI G., 2008 - Population genetic structure and diversity of the Apennine endemic stream frog, *Rana italica* - insights on the Pleistocene evolutionary history of the Italian peninsular biota. *Molecular Ecology*, 17: 3856-3872.
- CASALE A., RIBERA I., 2008 - Are Molopina of the Euro-Mediterranean region related to the Madagascan, South African and Australian Pterostichini? (Coleoptera, Carabidae). *Biogeographia*, 39: 33-44.
- CASAZZA G., ZAPPA E., MARIOTTI M.G., MÉDAIL F., MINUTO L., 2008 - Ecological and historical factors affecting distribution pattern and richness of endemic plant species: the case of the Maritime and Ligurian Alps hotspot. *Diversity and Distributions*, 14: 47-58
- CHAABANE K., LOREAU M., JOSENS G., 1996 - Individual and population energy budgets of *Abax ater* (Coleoptera, Carabidae). *Annales Zoologici Fennici*, 33: 97-108.
- CSIKI E., 1916 - Egy régi rovarfaj munkáról. *Rovartani Lapok*, 23: 7-15.
- DE QUEIROZ K., 2007 - Species concepts and species delimitation. *Systematic biology*, 56: 879-886.
- DEJEAN P.F.M.A., 1828 - Species général des Coléoptères de la collection de M. le Comte Dejean. - Paris, Mequignon-Marvis ed. - vol. III, VII + 556 pp. (Part of: DEJEAN, P.F.M.A. 1825-1831: *Spécies général des Coléoptères de la collection de M. le Comte Dejean*. - Paris, Mequignon-Marvis ed., 5 volumes).
- DEPOLI G., 1939 - Contributo alla conoscenza delle razze dell'*Abax ater* Vill. Col. (Carabidae) con particolare riguardo alla Venezia Tridentina. *Studi Trentini di Scienze Naturali*, 17: 115-128.
- DUFOUR L., 1851 - Des zones entomologiques dans nos Pyrénées occidentales, et designation des insectes qui les habitent. *Actes Société Linnéenne de Bordeaux*, 17: 304-364.
- DÜRING A., 2002 - Differentiation between *Abax parallelepipedus* and *Abax angustatus* in morphological and genetic character complexes (Abstract). In BAUER T., DEN BOER P., SZYSZKO J. (eds.), *How to protect or what we know about Carabid Beetles: from knowledge to application, from Wijster (1969) to Tuczno (2001)*. 37-44, Warsaw Agricultural University.
- DÜRING A., BRUECKNER M., 2000 - The evolutionary history of the tribe Molopini: a first molecular approach. - In BRANDMAYR, P., LÖVEI, G., ZETTO-BRANDMAYR T., CASALE, A., VIGNA TAGLIANTI A. (eds); *Natural History and applied Ecology of Carabid Beetles*. Series Faunistica, 19: 1-4, Pensoft Publishers, Sofia-Moscow.
- FAIRMAIRE L.M.H., 1856 - *Miscellanea Entomologica*. Première Partie. *Annales de la Société Entomologique de France*, 3. Série, 4: 516-548.
- FIORI F., 1896 - Note critiche sulle specie del primo gruppo del genere *Abax*. *Atti Soc. Nat. Modena*, 29: 28-42.
- GARNIER S., ALIBERT P., AUDIOT P., PRIEUR B., RASPLUS J.-Y., 2004 - Isolation by distance and sharp discontinuities in gene frequencies: implications for the phylogeography of an alpine insect species, *Carabus solieri*. *Molecular Ecology*, 13: 1883-1897.
- GRASSI F., MINUTO L., CASAZZA G., LABRA M., SALA F., 2009 - Haplotype richness in refugial areas: phylogeographical structure of *Saxifraga callosa*. *Journal of Plant Research*, 122: 377-387.
- HABEL J.C., DREES C., SCHMITT T., ASSMANN T., 2010 - Review refugial areas and postglacial colonizations in the western Palearctic. In: HABEL J.C., ASSMANN T. (eds.) *Relict species: Phylogeography and Conservation Biology*, Springer Berlin Heidelberg, pp. 189-197.
- HEER O., 1841 - *Fauna Coleopterorum Helvetica*. Pars I. Turici, Impensis Orellii, Fuesslini et Sociorum (Lief. 3), XII + 652 pp.
- HEWITT G.M., 1996 - Some genetic consequences of ice ages, and their role, in divergence and speciation. *Biological Journal of the Linnean Society*, 58: 247-276.

- HEWITT G.M., 2004 - Genetic consequences of climatic oscillations in the Quaternary. *Philosophical Transactions of the Royal Society of London. Series B: Biological Sciences*, 359: 183-195.
- HOMBURG K., DREES C., GOSSNER M.M., RAKOSY L., VREZEC A., ASSMANN T., 2013 - Multiple Glacial Refugia of the Low-Dispersal Ground Beetle *Carabus irregularis* : Molecular Data Support Predictions of Species Distribution Models. *Plos One*, 8: e61185.
- HUIDU M., 2011 - Comparative study concerning the Carabidae fauna from the beech forest and the nearby meadow from Bistrita Gorges (Buila-Vanturarita National Park). *South Western Journal of Horticulture, Biology and Environment*, 2: 95-105.
- HUIDU M., 2012 - Comparative data concerning the carabid populations dynamics in a mixed tree forest (Buila-Vanturarita National Park). *Studia Universitatis Vasile Goldis Seria Stiintele Vietii (Life Sciences Series)*, 22: 443-450.
- JEANNEL R., 1942 - Coléoptères Carabiques. *Faune de France*, 40: 1-600 Tome II, Lechevalier, Paris.
- KALTENRIEDER P., PROCACCI G., VANNIÈRE B., TINNER W., 2010 - Vegetation and fire history of the Euganean Hills (Colli Euganei) as recorded by Lateglacial and Holocene sedimentary series from Lago della Costa (northeastern Italy). *The Holocene*, 20: 679-695.
- KELLER I., LARGIADÉR C.R., 2003a - Recent habitat fragmentation caused by major roads leads to reduction of gene flow and loss of genetic variability in ground beetles. *Proceedings of the Royal Society of London - B*, 270: doi 10.1098/rspb.2002.2247.
- KELLER I., LARGIADÉR C.R., 2003b - Five microsatellite DNA markers for the ground beetle *Abax parallelepipedus* (Coleoptera, Carabidae). *Molecular Ecology Notes*, 3: 113-114.
- KELLER I., NENTWIG W., LARGIADÉR C.R., 2004 - Recent habitat fragmentation due to roads can lead to significant genetic differentiation in an abundant flightless ground beetle. *Molecular Ecology*, 13: 2983-2994.
- KOFLER A., 2005 - Zur Laufkäferfauna im Bezirk Lienz: Osttirol (Österreich) (Coleoptera: Carabidae). *Berichte des naturwissenschaftlichen-medizinischen Verein Innsbruck*, 92: 189-220.
- KRYZHANOVSKIY O.L., BELOUSOV I.A., KABAK I.I., KATAEV B.M., MAKAROV K.V., SHILENKOV V.G., 1995 - A Checklist of the Ground-Beetles of Russia and Adjacent Lands (Insecta, Coleoptera, Carabidae). *Series Faunistica*, 3, Pensoft Publisher, Sophia-Moscow, 270 pp.
- LABRA M., GRASSI F., SGORBATI S., FERRARI C., 2006 - Distribution of genetic variability in southern populations of Scots pine (*Pinus sylvestris* L.) from the Alps to the Apennines. *Flora-Morphology, Distribution, Functional Ecology of Plants*, 201: 468-476.
- LINDROTH C.H., 1945 - Ground Beetles (Carabidae) of Fennoscandia. Vol. 1. Smithsonian Institution Libraries, Washington, USA (edited in 1992, translated from the German), 630 pp.
- LOREAU M., NOLF C.L., 1993 - Occupation of space by the carabid beetle *Abax ater*. *Acta Oecologica*, 14: 247-258.
- LÖSER S., 1970 - Brutfürsorge und Brutpflege bei Laufkäfern der Gattung *Abax*. *Zoologischer Anzeiger*, 196: 150-160.
- LUIGIONI P., 1929 - I coleotteri d'Italia. *Catalogo sinonimico-topografico-bibliografico. Memorie della pontificia Accademia delle Scienze - I Nuovi Lincei*, 13: 1-1159, Roma.
- MADGE R.B., 1975 - The Type species of the Bonelli's genera of Carabidae (Coleoptera). *Quaestiones Entomologicae*, 11: 579-586
- MAGISTRETTI M., 1965 - Coleoptera Cicindelidae, Carabidae. *Catalogo topografico. Fauna d'Italia*, 8: 1-512, Editore Calderini, Bologna.
- MAGRINI P., DEGIOVANNI A., 2013 - Note sul genere *Abax*, 1810, con descrizione di una nuova specie delle Dolomiti (Coleoptera, Carabidae). *Giornale italiano di Entomologia*, 13 (58): 271-282.
- MARCUZZI G., 1953 - Osservazioni sulla microsistematica di alcuni coleotteri delle Dolomiti. *Atti Ist. Veneto Sc. Lett. Arti*, 111: 209-264.
- MONSEN K.J., BLOUIN M.S., 2004 - Extreme isolation by distance in a montane frog *Rana cascadae*. *Conservation Genetics*, 5: 827-835
- ORTUÑO V.M., ARRIBAS O., 1992 - El complejo poblacional de *Abax pyrenaicus* Dejean, 1828 (Col. Caraboidea, Pterostichidae). *Graellsia*, 48: 109-120.
- PAUTASSO M., 2013 - Forest ecosystems and global change: the case study of Insubria. *Annali di Botanica*, 3: 1-29.
- PILLER M., MITTERPACHER L., 1783 - Iter per Poseganam Sclavoniae provinciam mensibus Junio et Julio MDCCLXXXII. Budae, Typis regiae universitatis; Prostat Pestini, Budae & Cassoviae apud J.M. Weingand & J. G. Köpf; 147 pp. + plates I-X
- PORTA A., 1903 - Revisione delle specie italiane appartenenti al Genere *Abax*. *Rivista Coleotterologica Italiana*, 1: 135-144 (I pars) 183-198 (II pars).
- PROVAN J., BENNETT K.D., 2008 - Phylogeographic insights into cryptic glacial refugia. *Trends in Ecology & Evolution*, 23: 564-571.



- RATTI E., BUSATO L., DE MARTIN P., ZANELLA L., 1998 - I coleotteri carabidi dei Colli Euganei (Veneto) (Insecta Coleoptera Carabidae). *Bollettino Museo civico Storia naturale di Venezia*, 48 (1997): 5-63.
- RAVAZZI C., PERESANI M., PINI R., VESCOVI E., 2007 - Il Tardoglaciale nelle Alpi italiane e in Pianura Padana. Evoluzione stratigrafica, storia della vegetazione e del popolamento antropico. *Il Quaternario*, 20: 163-184.
- SCHATZMAYR A., 1944 - Appunti coleotterologici XI. *Natura*, 35: 25-29.
- SCHAUBERGER E., 1927 - Revision des Genus *Abax* Bon.. *Coleopterologisches Centralblatt*, 2: 121-134.
- SCHMITT T., 2009 - Biogeographical and evolutionary importance of the European high mountain systems. *Frontiers in Zoology*, 6: 9.
- SCHÖNSWETTER P., STEHLIK I., HOLDEREGGER R., TRIBSCH A., 2005 - Molecular evidence for glacial refugia of mountain plants in the European Alps. *Molecular Ecology*, 14: 3547-3555.
- SEIDLITZ G.C.M., 1887-91 - Fauna Baltica: die Käfer (Coleoptera) der deutschen Ostseeprovinzen Russlands. Zweite Auflage, Königsberg, LVI + 818 pp.
- SEIDLITZ G.C.M., 1888 - Fauna Transsylvanica. Die Käfer (Coleoptera) Siebenbürgens. Hartungsche Verlagsdruckerei, Königsberg, LVI + 914 + 5 pp.
- STEWART J.R., LISTER A.M., BARNES I., DALEN L., 2010 - Refugia revisited: individualistic responses of species in space and time. *Proceedings of the Royal Society of London. Series B: Biological Sciences*, 277: 661-671.
- SZÖVÉNYI P., ARROYO K., GUGGISBERG A., CONTI E., 2009 - Effects of Pleistocene glaciations on the genetic structure of *Saxifraga florulenta* (Saxifragaceae), a rare endemic of the Maritime Alps. *Taxon*, 58: 532-543.
- TABERLET P., FUMAGALLI L., WUST-SAUCY A.-G., COSSON J.F., 1998 - Comparative phylogeography and postglacial colonization routes in Europe. *Molecular Ecology*, 7: 453-464.
- TELNOV D., 2004 - Check-list of Latvian beetles (Insecta: Coleoptera). In Telnov D. (ed.), *Compendium of Latvian coleoptera*. Vol 1., "Petrovskis & Ko", Riga, 114 pp.
- THIELE H.-U., 1977 - Carabids and their environments. Springer-Verlag, Berlin, 369 pp.
- THORPE R.S., 1987 - Geographic variation: A synthesis of cause, data, pattern and congruence in relation to subspecies, multivariate analysis and phylogenesis. *Bollettino di Zoologia*, 54: 3-11.
- TRIBSCH A., SCHÖNSWETTER P., 2003 - Patterns of endemism and comparative phylogeography confirm palaeoenvironmental evidence for Pleistocene refugia in the Eastern Alps. *Taxon*, 52: 477-497.
- VARVARA M., PILAT A., 2004 - The knowledge of carabids (Coleoptera, Carabidae) from three sites of the Fundătura Forest, Răchitoasa, Bacău county. *Analele Științifice ale Universității "Al.I.Cuza" Iași, s. Biologie animală*, 50: 141-155.
- VESCOVI E., RAVAZZI C., ARPENTI E., FINSINGER W., PINI R., VALSECCHI V., WICKE L., AMMANN B., TINNER W., 2007 - Interactions between climate and vegetation during the Lateglacial period as recorded by lake and mire sediment archives in Northern Italy and Southern Switzerland. *Quaternary Science Reviews*, 26: 1650-1669.
- VIGNA TAGLIANTI A., 1993 - Coleoptera Archostemata, Adepaga 1 (Carabidae). In MINELLI A., RUFFO S., LA POSTA S. (eds.), *Checklist delle specie della fauna italiana*, 44. Calderini, Bologna.
- VIGNA TAGLIANTI A., 2014 - Fauna Europaea: Carabidae. In Audisio P. (2012) *Fauna Europaea: Coleoptera*. Fauna Europaea version 2.5, <http://www.faunaeur.org> [accessed 20 February 2014]
- VIGNA TAGLIANTI A., AUDISIO P. A., BIONDI M., BOLOGNA M. A., CARPANETO G. M., DE BIASE A., FATTORINI S., PIATTELLA E., SINDACO R., VENCHI A., ZAPPAROLI M., 1999 - A proposal for a chorotype classification of the Near East fauna, in the framework of the Western Palearctic region. *Biogeographia*, 20 (n.s.): 31-59.
- VILLERS C.J. DE, 1789 - *Caroli Linnaei entomologia, faunae succicae descriptionibus aucta*. vol. I, Lugduni, Piestre et Delamolliere, XVI + 765 pp.
- WRIGHT S., 1943 - Isolation by distance. *Genetics*, 28: 114-138.

Gianni ALLEGRO\* - Luca CRISTALDI\*\*

## Campionamenti di Carabidi nel Parco Fluviale del Po (tratto alessandrino, Piemonte) mediante trappole luminose a luce di Wood (Coleoptera Carabidae)<sup>1</sup>

**Riassunto:** Un'indagine condotta negli anni 2014 e 2015 in quattro stazioni del Parco fluviale del Po (tratto alessandrino) utilizzando trappole luminose a luce di Wood ha consentito di censire 71 specie di Carabidi, 18 delle quali non segnalate nell'articolo di Allegro & Sciaky (2001) relativo a questo stesso territorio. Vengono discusse le segnalazioni di alcune specie interessanti come *Bembidion assimile*, *Lymnastis galilaeus*, *Egadroma marginatum*, *Acupalpus brunnipes*, *Trechicus nigriceps* e *Zuphium olens* e, infine, i principali fattori limitanti relativi a questa tecnica di campionamento.

**Abstract:** *Sampling of ground beetles (Coleoptera, Carabidae) by Wood light traps in the Po river natural park (eastern Piedmontese course).* A survey carried out during 2014-2015 by Wood light traps in four different sites of the Piedmontese Po fluvial park (eastern course) showed the presence of 71 Carabid species, of which 18 were not previously recorded in the paper by Allegro & Sciaky (2001) concerning the same fluvial area. The records of some interesting species such as *Bembidion assimile*, *Lymnastis galilaeus*, *Egadroma marginatum*, *Acupalpus brun-nipes*, *Trechicus nigriceps* and *Zuphium olens* are discussed, as well as the main limiting factors of this sampling method.

**Key words:** Ground beetles, Light trap, Faunistics, Po river, Riparian habitats, Piedmont, Italy.

### INTRODUZIONE

Gli ecosistemi fluviali sono particolarmente complessi e in genere molto ricchi di biodiversità, con flore e faune per lo più specifiche, talvolta minacciate per la progressiva rarefazione delle aree umide e paludose. In questi ambienti vengono frequentemente realizzati studi e monitoraggi indirizzati a migliorare le conoscenze sulle comunità animali e vegetali presenti al loro interno e a comprendere meglio i meccanismi del loro funzionamento (Moretti & Patocchi, 2004), e in questo ambito vengono sovente studiate le comunità di Coleotteri Carabidi, che costituiscono ottimi bioindicatori perché in grado di fornire importanti indizi sulle condizioni ecologiche dei biotopi oggetto di studio (Thiele, 1977; Brandmayr *et al.*, 2005).

La carabidofauna del Po piemontese era già stata oggetto di studi riguardanti sia il suo tratto cuneese (Della Beffa & Rastelli, 2007) sia il tratto alessandrino (Allegro & Sciaky, 2001), entrambi inseriti con Legge Regionale n. 28/1990 nel Sistema delle Aree protette della Fascia fluviale del Po. Della Beffa

& Rastelli (2007), utilizzando tecniche tradizionali di ricerca (a vista o mediante trappole a caduta), hanno segnalato la presenza di 71 specie, mentre Allegro & Sciaky (2001) ne hanno segnalate 187, distribuite nei principali ambienti ripari, diverse delle quali rare e molto interessanti.

Tuttavia, successive indagini condotte in altri ambienti piemontesi utilizzando una trappola luminosa a luce di Wood (Allegro, 2013) avevano messo in evidenza le grandi potenzialità di questa tecnica di campionamento, capace di portare alla luce specie di Carabidi mai precedentemente censite negli stessi territori. La trappola luminosa a luce di Wood è infatti molto efficace nella cattura di numerose specie di Coleotteri alate e dotate di elevata vagilità, ed è già stata utilizzata per migliorare le conoscenze faunistiche in diversi studi riguardanti i Coleotteri Carabidi (cfr. tra gli altri Kádár & Lövei, 1992; Usis & MacLean, 1998; Yahiro & Yano, 1997).

Poiché le specie alate costituiscono una frazione elevata di quelle presenti negli ambienti igrofilo e ripari

\*Giani Allegro, CREA - Consiglio per la ricerca in agricoltura e l'analisi dell'economia agraria, PLF Unità di Ricerca per le Produzioni Legnose Fuori Foresta, Casale Monferrato (AL), Italia. E-mail: gianni.allegro@crea.gov.it

\*\*Luca Cristaldi, Parco del Po vercellese-alessandrino. E-mail: luca.cristaldi@parcodelpo-vc.al.it

<sup>1</sup> Lavoro parzialmente realizzato con il contributo dell'Ente di gestione delle aree protette del Po vercellese-alessandrino nell'ambito del Progetto BASSI BOSCHI.

(lo stato alare macroterro è un carattere morfo-funzionale evolutivamente selezionato in ambienti instabili, come sono quelli ripari), questa metodologia è stata utilizzata in nuove indagini condotte in ambienti interni al Parco fluviale del Po piemontese nel suo tratto alessandrino, già interessato dallo studio di Allegro & Sciaky (2001), allo scopo di migliorare le conoscenze sulla biodiversità entomologica di questo territorio.

#### MATERIALI E METODI

I campionamenti sono stati realizzati in quattro diverse località all'interno del Parco fluviale del Po, tratto alessandrino, tre delle quali su sponda de-

stra del fiume Po in prossimità dei centri abitati di Valenza e di Bassignana (periodo 9/07-26/08/2014) e presso l'Azienda sperimentale Mezzi di Casale Monferrato, annessa all'Unità di Ricerca per le Produzioni legnose fuori foresta (CREA-PLF) (periodo 1/07-18/08/2015), e una su sponda sinistra del fiume all'interno della Garzaia di Valenza (periodo 1/07-24/08/2015) (Fig. 1).

Le catture sono state realizzate con trappole luminose costituite da 2 tubi appaiati da 18 W a luce nera (luce di Wood) alimentati a rete, sotto le quali era collocato un secchio dotato superiormente di un imbuto che aveva lo scopo di impedire la fuga degli esemplari

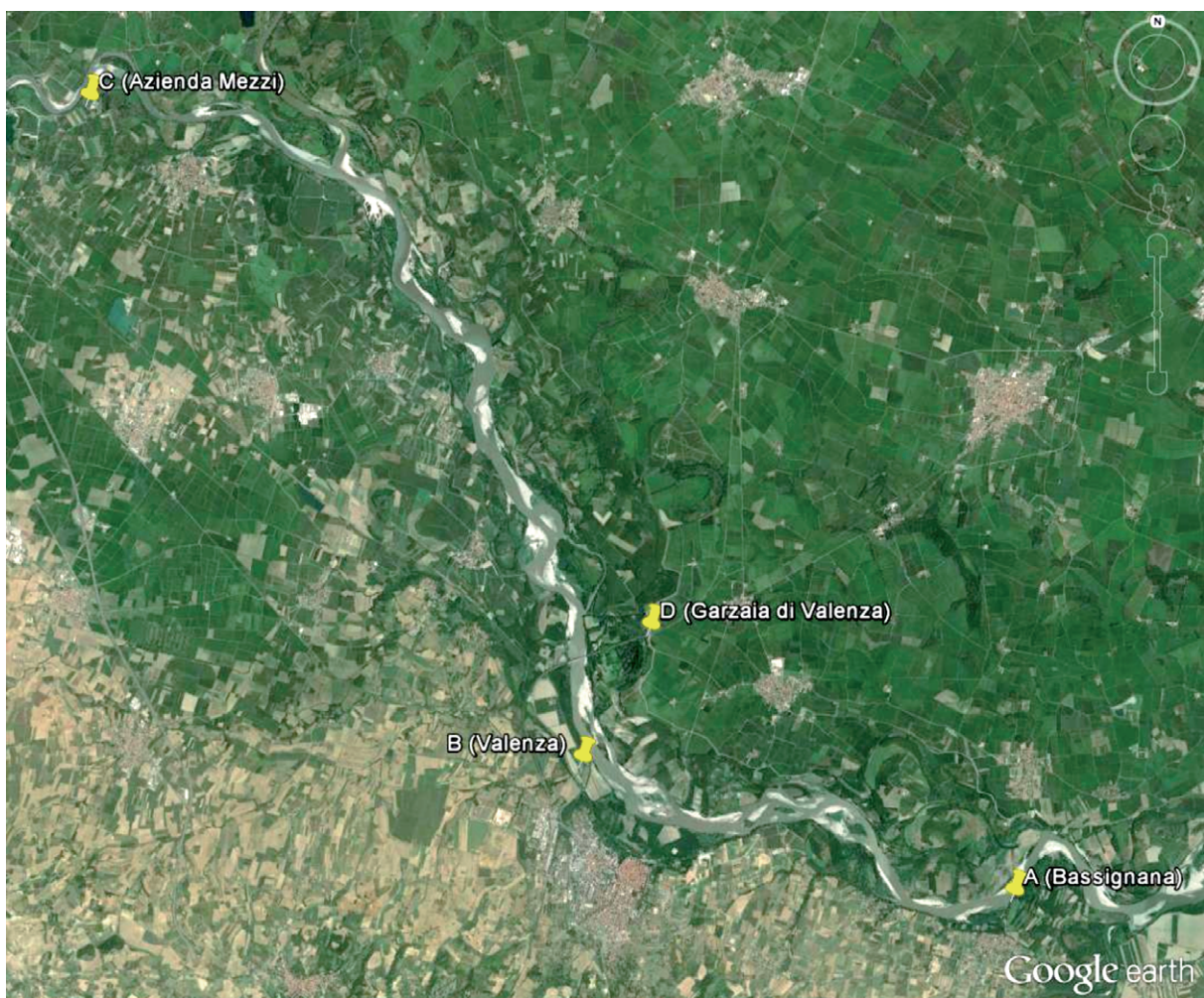


Fig. 1. Mappa da satellite delle quattro località di campionamento con trappola luminosa (immagine: Google Earth® 2013).

Campionamenti di Carabidi nel Parco Fluviale del Po mediante trappole luminose a luce di Wood

Tab. 1. Elenco delle specie di Carabidae catturate con trappola luminosa in quattro stazioni del Parco fluviale del Po tratto alessandrino (A=Bassignana, B=Valenza, C=Az. Mezzi Casale Monf., D=Garzaia di Valenza) con relative categoria corologica, preferenze ecologiche e frequenza di cattura (vedi testo). Sono contrassegnate con asterisco (\*) quelle non segnalate nell'articolo di Allegro & Sciaky (2001).

Tribù	Specie	Corot.	Ecol.	A	B	C	D
Brachinini	<i>Brachinus crepitans</i> (Linnaeus, 1758)	PAL	X		+	+	
	<i>Brachinus sclopeta</i> (Fabricius, 1792)	EUM	X		+	++	
	<i>Brachinus plagiatus</i> Reiche, 1868 *	MED	I			+	
	<i>Brachinus psophia</i> Audinet-Serville, 1821	TUE	X		+		
Clivinini	<i>Clivina fossor</i> (Linnaeus, 1758)	OLA	X	+	++		
	<i>Clivina collaris</i> (Herbst, 1784)	TUE	I		+		
Dyschiriini	<i>Dyschiriodes aeneus</i> (Dejean, 1825)	SIE	I	+			
	<i>Dyschiriodes nitidus</i> (Dejean, 1825)	ASE	I		++		
	<i>Dyschirius angustatus</i> (Ahrens, 1830)	EUR	I		+		
Bembidiini	<i>Bembidion laticolle</i> (Duftschmid, 1812)	EUR	I		+		
	<i>Bembidion striatum</i> (Fabricius, 1792)	SIE	I				+
	<i>Bembidion dentellum</i> (Thunberg, 1787)	EUR	I		+		
	<i>Bembidion semipunctatum</i> (Donovan, 1806)	PAL	I		+	+	
	<i>Bembidion articulatum</i> (Panzer, 1796)	ASE	I		+		
	<i>Bembidion assimile</i> Gyllenhal, 1810	WPA	I				+
	<i>Bembidion latiplaga</i> Chaudoir, 1850	MED	I	++	++		
	<i>Bembidion lunulatum</i> (Geoffroy in Fourcroy, 1795)	EUM	I	++	++	+	+
	<i>Bembidion quadrimaculatum</i> (Linnaeus, 1761)	OLA	I	++	++	++	
	<i>Bembidion quadripustulatum</i> Audinet-Serville, 1821	CEM	I	+	++		
	<i>Bembidion testaceum</i> (Duftschmid, 1812)	EUR	I		+	+	
	<i>Paratachys bistriatus</i> (Duftschmid, 1812)	TUE	I		++		
	<i>Paratachys micros</i> (Fischer von Waldheim, 1828)	EUM	I				+++
	<i>Sphaerotachys hoemorrhoidalis</i> (Ponza, 1805)	AFM	I	++	++	+	+
<i>Lymnastis galilaeus</i> Piochard de Brùlerie, 1876 *	MED	I		+			
Trechini	<i>Blemus discus discus</i> (Fabricius, 1792)	OLA	I	++	++	+	++
	<i>Perileptus areolatus</i> (Creutzer, 1799)	EUM	I		+		
Pterostichini	<i>Pterostichus aterrimus aterrimus</i> (Herbst, 1784)	WPA	I		+	+	
	<i>Pterostichus niger niger</i> (Schaller, 1783)	ASE	I			+	
	<i>Pterostichus oenotrius</i> Ravizza, 1975	SEU	I				+
Zabrini	<i>Amara bifrons</i> (Gyllenhal, 1810)	CAE	X			+	
Anisodactylini	<i>Anisodactylus signatus</i> (Panzer, 1796)	ASE	I		+	+++	++
	<i>Scybalicus oblongiusculus</i> (Dejean, 1829)	MED	X	+	++	+	
Harpalini	<i>Pseudoophonus rufipes</i> (Degeer, 1774)	OLA	X	+++	+++	+++	+++
	<i>Pseudoophonus griseus</i> (Panzer, 1796)	PAL	X	+++	+++	++	+
	<i>Pseudoophonus calceatus</i> (Duftschmid, 1812) *	ASE	X	++	++		
	<i>Parophonus hirsutus</i> (Dejean, 1829)	TUM	I	+++	+++	+++	
	<i>Parophonus maculicornis</i> (Duftschmid, 1812)	SEU	X			+	+
	<i>Harpalus anxius</i> (Duftschmid, 1812)	PAL	X	+			
	<i>Harpalus froelichii</i> Sturm, 1818	ASE	X	+++	+++	+++	+++
	<i>Harpalus smaragdinus</i> (Duftschmid, 1812)	TEM	X			+	
	<i>Cryptophonus tenebrosus</i> (Dejean, 1829) *	WPA	X	++	+++	+	+
	<i>Ophonus ardosiacus</i> (Lutshnik, 1922) *	EUM	X		++	+	
	<i>Ophonus diffinis</i> (Dejean, 1829) *	EUR	X	+	++		
	<i>Ophonus rufibarbis</i> (Fabricius, 1792)	TEM	X	+++	++		
	<i>Ophonus sabulicola</i> (Panzer, 1796) *	TUE	X		+		
	<i>Ophonus azureus</i> (Fabricius, 1775)	CEM	X		+		
	<i>Ophonus puncticeps</i> Stephens, 1828 *	TUE	X		++	+	
	<i>Ophonus melletii</i> (Heer, 1837) *	EUR	X		++		
	<i>Amblystomus niger</i> (Heer, 1841)	EUM	X	+			++

Continua nella pagina seguente

Tab. 1. *Segue dalla pagina precedente*

Tribù	Specie	Corot.	Ecol.	A	B	C	D
Stenolophini	<i>Stenolophus discophorus</i> (Fischer, 1823)	EUR	I		++	++	
	<i>Stenolophus teutonius</i> (Schrank, 1781)	TEM	I		+	++	+
	<i>Stenolophus mixtus</i> (Herbst, 1784)	PAL	I	+			
	<i>Egadroma marginatum</i> (Dejean, 1829) *	WPA	I	+++	+++	+++	
	<i>Bradycellus verbasci</i> (Duftschmid, 1812)	TUE	I		+		
	<i>Acupalpus maculatus</i> Schaum, 1860	EUR	I	++	++	++	
	<i>Acupalpus notatus</i> Mulsant & Rey, 1861 *	MED	I		+	+	
	<i>Acupalpus luteatus</i> (Duftschmid, 1812) *	PAL	I	+			
	<i>Acupalpus brunnipes</i> (Sturm, 1825) *	EUM	I	++			
	<i>Anthracus consputus</i> (Duftschmid, 1812)	ASE	I	+			
Platynini	<i>Agonum muelleri muelleri</i> (Herbst, 1784)	SIE	I	+			
	<i>Agonum micans</i> (Nicolai, 1822)	ASE	I			+	
Licinini	<i>Badister sodalis</i> (Duftschmid, 1812)	TUE	I	+		+	
	<i>Badister bullatus</i> (Schrank, 1798)	OLA	I			+	
	<i>Badister dilatatus</i> Chaudoir, 1837 *	SIE	I			+	+
Panagaeni	<i>Panagaeus cruxmajor</i> (Linné, 1758)	SIE	I		+		
Chlaeniini	<i>Chlaeniellus vestitus</i> (Paykull, 1790)	PAL	I	+			
Perigonini	<i>Trechicus nigriceps</i> (Dejean, 1831) *	COS	X	+	+		
Dromiini	<i>Microlestes corticalis</i> (L. Dufour, 1820)	TUM	X		+		
Lebiini	<i>Lebia scapularis</i> (Geoffroy, 1785) *	CEM	A		+	+	
	<i>Lebia humeralis</i> Dejean, 1825 *	SEU	A			+	
Zuphiini	<i>Zuphium olens</i> (P. Rossi, 1790) *	AIM	X			+	

caduti al suo interno. La conservazione degli esemplari era assicurata da una soluzione sovrasatura di acqua e sale da cucina contenuta all'interno del secchio.

Tutti gli esemplari di Carabidi catturati sono stati identificati a livello di specie. Alcuni esemplari sono stati preparati a secco su cartellino, mentre i rimanenti sono conservati in alcool etilico 70% all'interno di provette nel laboratorio di Entomologia del CREA-PLF.

Di tutte le specie censite vengono fornite informazioni sulla rispettiva categoria corologica *sensu* Vigna Taglianti (2005a), le preferenze ecologiche (I=igrofila; X=xerotermodifila; A=arboricola) e l'abbondanza delle catture realizzate nelle quattro località nel corso della presente indagine (+ sporadiche; ++ comuni; +++ abbondanti). La nomenclatura delle specie è quella riportata nella Checklist di Vigna Taglianti (2005b) tranne che per i Bembidiina, per i quali si è assunta come base la più recente checklist di Neri *et al.* (2011).

## RISULTATI

In Tab. 1 sono elencate le 71 specie di Carabidi

censite, 18 delle quali, contrassegnate da asterisco (\*), non erano segnalate nell'articolo di Allegro & Sciaky (2001) riguardante lo stesso territorio. Esse vengono presentate per tribù di appartenenza, con le già citate informazioni su corotipo, preferenze ecologiche e abbondanza di cattura.

Tra le nuove specie censite alcune sono molto rare in territorio piemontese: alcune di queste (*Lymnastis galilaeus*, *Egadroma marginatum*) sono state segnalate per la prima volta in Piemonte solo molto recentemente (Allegro, 2013), mentre un'altra (*Acupalpus brunnipes*) era nota per una sola segnalazione recente in regione (Pescarolo, 1994). Si tratta di specie fortemente igrofile e paludicole, di piccole o piccolissime dimensioni, difficilmente censibili con metodi di ricerca a vista. Altre specie tra quelle non censite da Allegro & Sciaky (2001) sono connotate da elevata igrofilia, come ad esempio *Brachinus plagiatus*, *Badister dilatatus*, *Acupalpus notatus* e *A. luteatus*. Diverse altre sono invece connotate da abitudini tendenzialmente termofile e steppiche (*Pseudoophonus calceatus*, *Cryptophonus tenebrosus*, i diversi

*Ophonus*, *Trechicus nigriceps* e *Zuphium olens*). Due specie soltanto hanno costumi arboricoli (*Lebia scapularis* e *L. humeralis*).

Vengono di seguito riportate alcune informazioni di carattere ecologico e distributivo relative alle specie di maggiore interesse.

***Bembidion assimile*** Gyllenhal, 1810 (Fig. 2)

Specie luticola già segnalata da Allegro & Sciaky (2001) di Alluvioni Cambiò, ma molto rara in tutta la Pianura Padana. Durante l'indagine ne è stato catturato un singolo esemplare nella Garzaia di Valenza.

***Lymnastis galilaeus*** Piochard de la Brûlerie, 1876

Specie solo recentemente segnalata in Piemonte (Allegro, 2013). Ripicola e limicola, è caratterizzata da spiccato fototropismo positivo, specialmente per quel che riguarda il sesso femminile (Magrini, 2010); le rare catture degli individui di que-

sta specie riportate in letteratura sono infatti state per lo più realizzate con trappole luminose.

***Egadroma marginatum*** (Dejean, 1829) (Fig. 3)

Specie ripicola e paludicola da poco segnalata in Piemonte (Allegro, 2013), oggi frequentemente catturata, anche in abbondanza, negli studi condotti dal primo autore con trappola luminosa a luce di Wood (cfr. Allegro, 2015). Nella presente indagine essa è stata catturata abbondante in tutte le stazioni sottoposte a campionamento.

***Acupalpus brunnipes*** (Sturm, 1825) (Fig. 4)

Indicato da Baudi di Selve (1889) e Della Beffa (1912) come raro in territorio piemontese e da Luigioni (1929) come presente in quasi tutte le regioni d'Italia, compreso il Piemonte. L'unica recente segnalazione in regione riguarda la Baraggia di Piano Rosa (Pescarolo, 1994). È anch'essa specie spiccatamente igrofila.

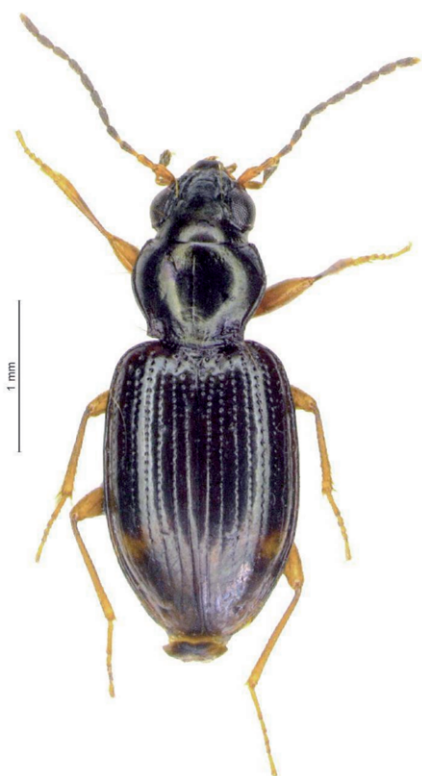


Fig. 2. *Bembidion assimile* Gyllenhal, 1810 (foto Gianni Allegro).

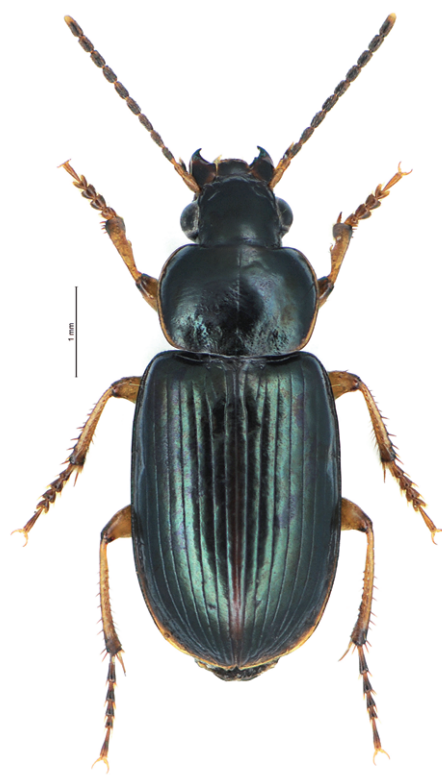


Fig. 3. *Egadroma marginatum* (Dejean, 1829) (foto Andrea Carlin).

***Trechicus nigriceps*** (Dejean, 1831)

Specie non rara ma molto localizzata in Piemonte. Originariamente a distribuzione intertropicale, oggi può essere considerata subcosmopolita per trasporto antropico attraverso le vie di scambio commerciale. Già citata da Magistretti (1965) di alcune altre località piemontesi e recentemente segnalata da Allegro (2013, 2015) per il Monferrato.

***Zuphium olens*** (P. Rossi, 1790)

Specie dalla biologia ancora poco conosciuta, forse meno rara di quanto supposto in passato perché frequentemente censita negli studi condotti con trappola luminosa (cfr. Allegro, 2010 e 2015).

## CONCLUSIONI

L'impiego della lampada a luce di Wood ha consentito un significativo aumento delle conoscenze faunistiche relative alle specie di Coleotteri Carabidi presenti nel territorio del Parco fluviale del Po (tratto alessandrino). Alle 187 specie di Carabidi già censite

da Allegro & Sciaky (2001) se ne aggiungono infatti ulteriori 18, alcune delle quali rare in tutto il territorio padano, che erano sfuggite ai metodi di indagine tradizionali. L'elevato numero delle specie censite nel presente studio (71), unicamente condotto con trappola luminosa, sottolinea le grandi potenzialità di questo strumento, che soffre tuttavia di alcune limitazioni.

In primo luogo la lampada, soprattutto se collocata in posizione elevata e ben visibile dalla distanza, possiede un ampio raggio d'azione ed è difficile pertanto l'attribuzione delle specie catturate a uno specifico biotopo, soprattutto se questo presenta dimensioni limitate.

Inoltre l'efficacia della trappola a luce di Wood risente in modo determinante delle condizioni atmosferiche, risultando massima nelle notti calde e afose in assenza di vento e al contrario quasi nulla, almeno per quanto riguarda i Carabidi, con temperature notturne inferiori a 20°C o in presenza di ventilazione. Per questo motivo le catture più interessanti sono in genere possibili soltanto nei mesi estivi: il mese di luglio, anche in relazione ai cicli biologici delle specie, sembra presentare le condizioni più favorevoli per queste indagini in ambiente padano, mentre durante il mese di agosto, pur perdurando condizioni climatiche favorevoli, si assiste in genere a un impoverimento e a una banalizzazione della fauna censita.

Un ulteriore fattore limitante è costituito dalla variabilità della sensibilità specifica verso la sorgente luminosa: accanto a specie che vengono costantemente attratte in gran numero (per esempio negli ambienti cui fa riferimento il presente studio sono molto abbondanti le catture di *Harpalus froelichii*, *Egadroma marginatum*, *Parophonus hirsutulus* e *Pseudophonus* spp.) ve ne sono altre, anch'esse alate e comuni negli ambienti ripari, che vengono raramente catturate con la trappola luminosa. Per esempio, tra le numerose specie appartenenti al genere *Amara* sicuramente presenti lungo le rive del Po, soltanto *Amara bifrons* (Gyllenhal, 1810) è stata censita nel corso della presente indagine. E ancora, le specie del genere *Agonum* appartenenti al sottogenere *Melanagonum* non vengono attratte, mentre vengono sporadicamente attratti *Agonum* (s. str.) *muelleri* (Herbst, 1784) e le specie del sottogenere *Europhilus*.

Ma la limitazione più importante è ovviamente il fatto che la trappola luminosa non ha alcuna possibilità di censire le specie microterre incapaci di spo-

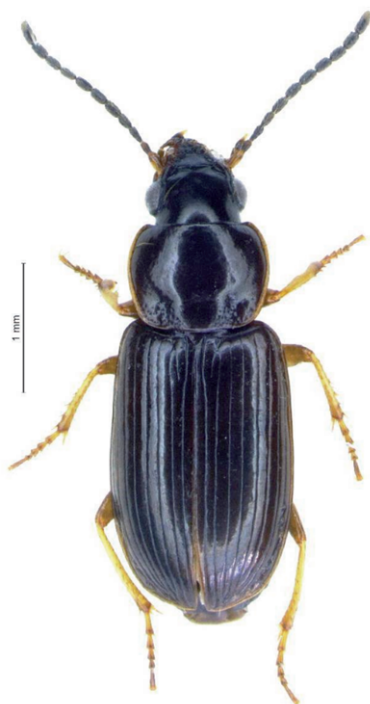


Fig. 4. *Acupalpus brunnipes* (Sturm, 1825) (foto Gianni Allegro).

starsi in volo, che sono sovente quelle caratterizzate dai livelli più elevati di specializzazione verso gli ambienti ecologicamente più stabili, come ad esempio le foreste, e sono pertanto quelle dotate del maggior potere di bioindicazione (quanto meno relativamente a tali ambienti). A questo proposito è interessante il tentativo da parte di alcuni ricercatori (Hébert *et al.*, 2000) di abbinare una sorgente luminosa attrattiva alla tradizionale trappola a caduta (pitfall trap), con risultati interessanti per la maggior accuratezza e completezza ottenibili nei censimenti faunistici, ma anche con un sensibile aggravio dei costi e della complessità delle operazioni di campionamento.

Ciò non toglie che la trappola luminosa a luce di Wood possa costituire un utile supporto negli studi faunistici condotti su vasta scala territoriale, inte-

grando i metodi di ricerca tradizionali, per migliorare le conoscenze e per censire in particolare le specie igrofile e riparie oppure quelle termofile e steppiche, per la maggior parte alate e dotate di elevata vagilità, alcune delle quali difficilmente osservabili con i metodi tradizionali perché caratterizzate da biologia o da preferenze ecologiche particolari.

#### RINGRAZIAMENTI

Si ringraziano il Responsabile della Vigilanza del Parco Carlo Carbonero per il supporto alla sistemazione delle trappole, Federico Felli dell'Agriturismo Cascina Nuova di Valenza per il supporto logistico, Achille Casale e Riccardo Sciaky per la revisione del manoscritto e Andrea Carlin per la concessione dell'immagine di *Egadroma marginatum*.

#### BIBLIOGRAFIA

- ALLEGRO G., SCIACY R., 2001 - I Coleotteri Carabidi del Po piemontese (tratto orientale). Bollettino del Museo regionale di Scienze naturali di Torino, 18(1): 173-201.
- ALLEGRO G., 2010 - I Carabidi del Basso Monferrato (Italia - Piemonte) (Coleoptera: Carabidae). In Picco F. (a cura di) 'Nascitur in Collibus Montisferrati. Biodiversità del Basso Monferrato'. Diffusioni Grafiche, Villanova Monf.: 103-114.
- ALLEGRO G., 2013 - Nuove segnalazioni di Carabidi per il Piemonte e considerazioni sulla carabidofauna piemontese (Coleoptera Carabidae). Rivista Piemontese di Storia Naturale, 34: 171-180.
- ALLEGRO G., 2015 - La fauna carabidica dell'Alneto del Mulino (Piemonte, Nord-Ovest Astigiano) (Coleoptera, Carabidae). I Quaderni di Muscandia, 14(2014): 109-117.
- BAUDI DI SELVE F., 1889- Catalogo dei Coleotteri del Piemonte. Annali della Regia Accademia di Agricoltura di Torino, 32: 51-274.
- BRANDMAYR P., ZETTO T., PIZZOLOTTO R. (a cura di), 2005 - I Coleotteri Carabidi per la valutazione ambientale e la conservazione della biodiversità. Manuale operativo. APAT, Manuali e linee guida, 34: 240 pp.
- DELLA BEFFA G., 1912 - I Coleotteri dell'agro torinese e loro rapporti colla vegetazione e l'agricoltura. Annali della regia Accademia di Agricoltura di Torino, 54 (1911): 69-346.
- DELLA BEFFA G., RASTELLI M., 2007 - Le cenosi carabidologiche delle sponde del fiume Po nel Parco del Po Cuneese (Coleoptera, Carabidae). In: DELMASTRO G.B., GAGGINO A., GIACHINO P.M., MORISI A., RASTELLI M. (eds.). Ricerche sugli ambienti acquatici del Po Cuneese - Interreg IIIA "Aqua". Memorie dell'Associazione Naturalistica Piemontese, 8: 97-110.
- HÉBERT C., JOBIN L., FRÉCHETTE M., PELLETIER G., COULOMBE C., GERMAIN C., AUGER M., 2000 - An efficient pit-light trap to study beetle diversity. Journal of Insect Conservation, 4: 191-202.
- KÁDÁR F., LÖVEI G.L., 1992 - Light trapping of Carabids (Coleoptera: Carabidae) in an apple orchard in Hungary. Acta Phytopathologica et Entomologica Hungarica, 27(1-4): 343-348.
- LUIGIONI P., 1929 - I Coleotteri d'Italia. Catalogo sinonimico-topografico-bibliografico. Memorie della pontificia Accademia delle Scienze "I nuovi Lincei", 2(13): 1160 pp.
- MAGRINI P., 2010 - Revisione delle specie europee appartenenti al Genere *Lymnastis* Motschulsky, 1862 con descrizione di tre nuovi taxa (Coleoptera, Carabidae, Trechinae). Annali del Museo Civico di Storia Naturale "G. Doria", 102: 337-390.
- MORETTI M., PATOCCHI N., 2004 - Bioindicazione faunistica in ecosistemi fluviali ripari. Principi e metodologie proposte nell'ambito di un programma di controllo a lungo termine delle golene svizzere. Studi Trentini di Scienze Naturali, Acta Biologica, 80 (2003): 209-215.
- NERI P., BONAVITA P., GUDENZI I., MAGRINI P., TOLEDANO L., 2011 - Bembidiina della fauna italo-corsa: chiavi di identificazione (Insecta Coleoptera Carabidae). Quaderno di Studi e Notizie di Storia Naturale della Romagna, 33: 1-183.
- PESCAROLO R., 1994 - I Coleotteri Carabidi della Baraggia di Piano Rosa (Piemonte, Novara). Rivista Piemontese di Storia Naturale, 14(1993): 171-183.



- THIELE H.U., 1977 - Carabid beetles in their environments. Springer Verlag, Berlin, 369 pp.
- USIS J.D., MACLEAN D.B., 1998 - The Ground Beetles (Coleoptera: Carabidae) of Stillfork Swamp Nature Preserve, Carroll County, Ohio. *The Ohio Journal of Science*, 98(4-5): 66-68.
- VIGNA TAGLIANTI A., 2005a - Distribuzione geografica e tipi corologici dei Carabidi italiani. 3.5. In: BRANDMAYR P., ZETTO T., PIZZOLOTTO R. (eds), *I Coleotteri Carabidi per la valutazione ambientale e la conservazione della biodiversità. Manuale operativo*. APAT, Manuali e linee guida, 34: p. 74-82.
- VIGNA TAGLIANTI A., 2005b - Checklist e corotipi delle specie di Carabidae della fauna italiana. Appendice B. In: BRANDMAYR P., ZETTO T., PIZZOLOTTO R. (eds), *I Coleotteri Carabidi per la valutazione ambientale e la conservazione della biodiversità. Manuale operativo*. APAT, Manuali e linee guida, 34: p. 186-225.
- YAHIRO K., YANO K., 1997 - Ground beetles (Coleoptera, Caraboidea) caught by a light trap during ten years. *Esakia*, 37: 57-69.

## SEGNALAZIONI FAUNISTICHE ITALIANE

596 - *Panolis flammea* (Denis & Schiffermüller, 1775) (Lepidoptera Noctuidae)

RONKAY L., YELA J.L., HREBLAY M.: Hadeninae II. Noctuidae Europaeae, Vol. 5, Sorø, 2001.

Prima segnalazione per l'Abruzzo di specie già nota di altre regioni italiane, molto rara e localizzata nell'Appennino Centrale.

REPERTI: Abruzzo: prov. L'Aquila, Lucoli, 1000 m, 23.IV.2015, 1 esemplare (foto R. Soldati, det. C. Flamigni). L'esemplare, attratto dalla luce artificiale, non è stato raccolto. A circa 400 m dal luogo del ritrovamento sono presenti pinete mature a *Pinus nigra* J.F. Arnold con alcuni individui di *P. sylvestris* L.

OSSERVAZIONI: Elemento a corotipo Sibirico-Europeo, noto in Italia di tutte le regioni settentrionali, Toscana, Umbria, Lazio, Puglia, Isole Tremiti, Calabria, Sicilia, Sardegna (Ceconi, 1908; Parenzan & Porcelli, 2007; Pinzari *et al.*, 2013; Zerunian & Zilli, 2014). È segnalata anche per la Repubblica di San Marino (Rezbanyai-Reser *et al.*, 2012). Per l'Appennino Centrale sono note solo poche catture, tutte recenti (a partire dal 2010), nelle zone del Monte Subasio (Umbria) e del Monte Cagno (Lazio). Specie di interesse forestale. La larva si nutre principalmente di *Pinus* e *Picea*, ma è segnalata anche su *Abies*, *Cedrus*, *Juniperus*, *Larix* e, occasionalmente, *Betula* e *Quercus* (Ronkay *et al.*, 2001). La sua diffusione nell'Appennino Centrale potrebbe essere legata a rimboschimenti di pino nero (Zilli, com. pers.).

## BIBLIOGRAFIA

- CECONI G., 1908 - Contributo alla fauna delle Isole Tremiti. Bollettino dei Musei di zoologia e anatomia comparata della R. Università di Torino, XXIII, N. 583: 51 pp.
- PARENZAN P., PORCELLI F., 2007 - I macrolepidotteri italiani. Fauna Lepidopterorum Italiae (Macrolepidoptera). Phytophaga, 15(2005-2006): 5-391, allegato in pdf: 1-1051.
- PINZARI M., PINZARI M., ZILLI A., 2013 - Additions and corrections to the Lepidoptera fauna of Mt Cagno and surroundings (Central Italy), with first records of *Caloptilia honoratella* and *Buvatina stroemella* from Italy (Lepidoptera). Bollettino dell'Associazione Romana di Entomologia, 68(1-4): 51-72.
- REZBANYAI-RESER L., SCHÄFFER E., FLAMIGNI C., 2012 - Ergebnisse der Nachtgrossfalterforschung in der Republik San Marino 2005-2011 (Lepidoptera "Macroheterocera"). Lepidopterologische Mitteilungen aus Luzern, 9: 1-126.
- RONKAY L., YELA J.L., HREBLAY M., 2001 - Hadeninae II. Noctuidae Europaeae, vol. 5. Entomological Press, Sorø, 1-452.
- ZERUNIAN Z., ZILLI A., 2014 - The Macrolepidoptera of Mt Subasio (Umbria, Central Italy). In: ZILLI A. (Ed.), Lepidoptera research in areas with high biodiversity potential in Italy, Volume 1. Natura Edizioni Scientifiche, Bologna: 9-104.

Rossano SOLDATI

Via Madonna del Colle 13, 67045 Colle di Lucoli (AQ), Italia. E-mail: soldatirossano@tiscali.it

Claudio FLAMIGNI

Via delle Belle Arti 21, 40126 Bologna (BO), Italia. E-mail: claudio.flamigni@alice.it

597 - *Atheta (Dimetrota) cauta* (Erichson, 1837) (Coleoptera: Staphylinidae: Aleocharinae: Athetini).

ERICHSON W.F., 1837 - Die Käfer der Mark Brandenburg, Morin, Berlin, Vol 1, pp 1-334.

Prima segnalazione per la Liguria di specie già nota di altre regioni d'Italia.

REPERTI: Liguria, Savona - M. S. Giorgio, Le Meugge, m. 750 - Trappole a caduta - 16/09/1982, 3 ♂♂, 1 ♀, leg. M.E. Franciscolo.

OSSERVAZIONI: la specie in questione fa parte di un lotto di esemplari che il compianto amico Mario Franciscolo mi diede in studio quando iniziai ad interessarmi al genere *Atheta*. Riesaminando tale materiale ho identificato questo taxon non ancora citato per la Liguria.

La specie, attribuita al sottogenere *Dimetrota* Muls. & Rey (Brundin, 1953) ha un'ampia diffusione paleartica. Löbl & Smetana (2004) la inseriscono nel sottogenere *Badura* Muls. & Rey e ne indicano la presenza in Azerbaijan,

Austria, Belgio, Repubblica Ceca, Danimarca, Finlandia, Francia, Gran Bretagna, Germania, Grecia, Ungheria, Irlanda, Lettonia, Lituania, Paesi Bassi, Norvegia, Polonia, Slovacchia, Svezia, Svizzera, Russia.

Segnalata per la prima volta per l'Italia (Veneto - Monti Lessini) da Zanetti & Manfrin (2004); i medesimi autori sottolineano che parte delle segnalazioni di *Atheta parvula* Mannh. indicate da Porta, 1926 (Tutta Italia) potrebbero essere in realtà riferibili ad *A. cauta* (sinonimia questa che venne suggerita da Brundin, 1953). Con riferimento a questo, una conferma della presenza in Sicilia si può trovare su internet (<http://archivia. unict.it/handle/10761/1409>). Assing (2010) la cita anche per la Turchia.

La specie si trova prevalentemente su materiale in decomposizione di origine animale e vegetale.

#### BIBLIOGRAFIA

- ASSING V., 2010 - On the Staphylinidae of Turkey. VII. Five new species and additional records (Coleoptera: Staphylinidae) – Koleopterologische Rundschau 80: 71-102.
- BRUNDIN L., 1953 - Die paläarktischen Arten der U.G. *Dimetrota* Muls. Rey. - Arkiv för Zoologi Bd. 59: 369-434.
- LÖBL I., SMETANA A., 2004 - Catalogue of Palaearctic Coleoptera. II. Hydrophiloidea–Histeroidea–Staphylinoidea. – Stenstrup: Apollo Books, 942 pp.
- PORTA A., 1926 - Fauna Coleopterorum Italica Vol. II – Stabilimento Tipografico Piacentino.
- ZANETTI A., MANFRIN C., 2004 - Coleotteri Stafilinidi (in : Latella L., Il Monte Pastello - Memorie del Museo Civico di Storia Naturale di Verona - 2. Serie - Monografie naturalistiche 1-2004, pag. 166).

Marco TERRILE

Via Acquarone 16/13, 16125 Genova, Italia. E-mail: [mterrile65@gmail.com](mailto:mterrile65@gmail.com)

598 - *Atheta (Traumoecia) bihamata* Fauvel, 1900 (Coleoptera: Staphylinidae: Aleocharinae: Athetini).

FAUVEL A., 1900 - Staphylinides nouveaux de Barbarie. Revue d'Entomologie, 19: 57-61

Conferma per la Sardegna di specie segnalata per la prima volta in Italia (Sardegna) pochi anni fa.

REPERTI: Sardegna, Dorgali (NU) - M. Tului, trappole a caduta, 24/05/1980, 4 exx., leg. M. Franciscolo

OSSERVAZIONI: la specie, nota della Corsica e della Tunisia (Löbl & Smetana A., 2004), è stata raccolta e segnalata in Sardegna (Carbonia) da Zanetti (2011).

L'ecologia di questa specie non è nota.

#### BIBLIOGRAFIA

- LÖBL I., SMETANA A., 2004 - Catalogue of Palaearctic Coleoptera. II. Hydrophiloidea-Histeroidea-Staphylinoidea. - Stenstrup: Apollo Books, 942 pp.
- ZANETTI A., 2011 - Contribution to the knowledge of Staphylinidae from southern Sardinia (Coleoptera) - pag. 345 [in: NARDI G., WHITMORE D., BARDIANI M., BIRTELE D., MASON F., SPADA L. & CERRETTI P. (eds), Biodiversity of Marganai and Montimannu (Sardinia). Research in the framework of the ICP Forests network. Conservazione Habitat Invertebrati, 5: 331-352].

Marco TERRILE

Via Acquarone 16/13, 16125 Genova, Italia. E-mail: [mterrile65@gmail.com](mailto:mterrile65@gmail.com)

599 - *Calamosternus mayeri* (Pilleri, 1953) (Coleoptera Aphodiidae)

DELLACASA G. & DELLACASA M. 2006 - Coleoptera: Aphodiidae, Aphodiinae. Fauna d'Italia, XLI: 157.

Prima segnalazione per le Marche di specie a distribuzione W-mediterranea, diffusa in Italia meridionale e insulare.

REPERTI: Marche: prov. Pesaro e Urbino, Riserva Naturale Statale Gola del Furlo, Monte Pietralata, 43°39'41.26" N 12°42'10.40" E, 800 m s.l.m., 15.V.2014, M. Tonelli leg. 1 ♂ (det. et coll. M. Tonelli).

OSSERVAZIONI: specie a corotipo W-Mediterraneo largamente distribuita nell'Africa mediterranea occidentale (Mauritania, Marocco, Algeria, Tunisia, Libia, Egitto), Portogallo, Spagna (Continentale e Isole Baleari), Corsica, Malta, Croazia, Grecia. Per l'Italia è nota nelle regioni meridionali e insulari: Calabria, Puglia, Basilicata, Campania,

Sicilia e Sardegna (Mariani & Pittino, 1983; Dellacasa G. & Dellacasa M., 2006; Ballerio *et al.*, 2010; Pivotti *et al.*, 2011). Dellacasa G. & Dellacasa M. (2006) delineano la bionomia della specie come segue: “Specie stenotopica, esclusiva dei pascoli esposti; coprofaga, si rinviene specialmente in sterco ovino. Invernale, primaverile ed estiva ma con attività prevalentemente primaverile. Non molto frequente. Diffusa dal livello del mare ai 500 metri”. L’esemplare raccolto è stato rinvenuto in una trappola a caduta innescata con sterco di vacca sulle praterie sommitali del Monte Pietralata (circa 800 m s.l.m.), frequentate durante tutto l’anno da circa 40 cavalli. Tali praterie, di origine secondaria, sono rappresentate dalla prateria a Forasacco e Sonaglini comuni (*Brizo mediae-Bromerum erecti* Bruno in Bruno e Covarelli corr. Biondi & Ballelli, 1982). In aree limitrofe sono presenti lembi di prateria più mesofila: prateria ad Avena altissima (*Festuco circummediterraneae-Arrhenatheretum elatioris* Allegrezza, 2003). Inoltre sono presenti arbusteti di Ginestra e Citiso a foglie sessili con prevalenza di Ginestra (*Spartium juncei-Cytisetum sessilifolii* Biondi, Allegrezza & Guitian, 1988 var. a *Spartium junceum*). Le formazioni boschive circostanti sono invece rappresentate da boschi di Carpino nero (*Scutellario columnae-Ostryetum carpinifoliae* Pedrotti, Ballelli & Biondi ex Pedrotti, Ballelli, Biondi, Cortini & Orsomando, 1980 subass. *violetosum reichenbachianae* Allegrezza, 2003) e da rimboschimenti di Pino nero. Le specie legnose più diffuse sono *Fraxinus ornus ornus* L., *Ostrya carpinifolia* Scop., *Quercus ilex ilex* L., *Quercus pubescens pubescens* Willd., *Acer opalus obtusatum* (Waldst. & Kit. ex Willd.) Gams, *Pinus nigra nigra* J.F. Arnold., *Crataegus monogyna* Jacq., *Juniperus oxycedrus* L., *Lonicera etrusca* Santi, *Spartium junceum* L., *Rosa canina* L. Il clima dell’area è caratterizzato da precipitazioni medie annue di circa 900 mm distribuite soprattutto nei mesi autunnali e primaverili con minimi nei mesi estivi. Le temperature medie annue si attestano attorno ai 10-14 gradi in funzione dell’altitudine. L’importanza di tale segnalazione è dettata dal fatto che, per l’Italia peninsulare, trattasi di una stazione significativamente più settentrionale dei limiti Nord dell’areale della specie sinora noti, oltre ad essere quella ad altitudine maggiore.

## BIBLIOGRAFIA

- DELLACASA G., DELLACASA M., 2006 - Fauna d’Italia. Vol. XLI Coleoptera – Aphodiidae, Aphodiinae (1a ed.). Ministero dell’Ambiente e della tutela del territorio, Edizioni Calderini de Il Sole 24 ore.
- MARIANI G., PITTINO R. 1983 - Gli *Aphodius* italiani del sottogenere *Calamosternus* e considerazioni sulle specie mediterranee del gruppo *granarius*. Atti della Società italiana di Scienze naturali e del Museo civico di Storia naturale di Milano, 124 (3-4): 145-161.
- BALLERIO A., REY A., ULIANA M., RASTELLI M., RASTELLI S., ROMANO M., COLACURCIO L., 2010 –Coleotteri Scarabeoidei d’Italia. Piccole Faune. DVD. M. Serra Tarantola ed., Brescia 13pp. + dvd.
- PIVOTTI I., AGOGLITTA R., ZUNINO M., PIATTELLA E., DELLACASA M., CORALLINI C., MIFSUD D. 2011 - The Scarabaeoidea of the Maltese Islands (Central Mediterranean) (Coleoptera). Bulletin of the Entomological Society of Malta, 4: 85-124.

Mattia TONELLI

Dipartimento di Scienze Pure e Applicate DiSPeA (già DiSTeVA), Università degli Studi di Urbino “Carlo Bo”,  
Campus Scientifico “Enrico Mattei”, Via Cà le Suore 2/4, 61029 Urbino (PU), Italia.  
E-mail: m.tonelli3@campus.uniurb.it

Marco DELLACASA

Museo di Storia Naturale, Università di Pisa, Via Roma 79, 56011 Calci (PI), Italia.  
E-mail: dellacasa@museo.unipi.it

Mario ZUNINO

Dipartimento di Scienze Pure e Applicate DiSPeA (già DiSTeVA), Università degli Studi di Urbino “Carlo Bo”,  
Campus Scientifico “Enrico Mattei”, Via Cà le Suore 2/4, 61029 Urbino (PU), Italia.  
E-mail: mario.zunino@uniurb.it

## ATTI SOCIALI

*Nel primo trimestre del 2016 sono mancati alcuni nostri Soci, dei quali forniamo qui di seguito alcune brevi note biografiche, in attesa di più accurati necrologi, completi di bibliografia, che potranno essere pubblicati in altre sedi.*

*Alle famiglie dei Colleghi vadano le più sentite condoglianze della nostra Società.*

*Roberto Poggi*

### **Fabio Cassola (1938-2016)**

Nato a Roma il 17 ottobre 1938, conseguì la maturità classica nel 1956, laureandosi nel 1960 in Giurisprudenza e svolgendo poi la sua attività professionale nella Capitale sino al 1999 come Avvocato dell'Istituto Nazionale della Previdenza Sociale.

Da ragazzo iniziò ad occuparsi di Coleotteri, restringendo abbastanza precocemente il suo interesse ai Cicindelidi, di cui divenne ben presto un esperto a livello mondiale. Su tale famiglia pubblicò quasi 200 contributi scientifici, descrivendo altrettante specie nuove inviategli in studio da numerosi musei ma spesso raccolte anche personalmente nel corso di molti viaggi effettuati in tutto il mondo.

Cassola fu pure autore di moltissimi altri articoli di argomento conservazionistico e ambientale, occupandosi dal punto di vista giuridico-istituzionale di parchi e aree protette. Nel 1966 fu tra i fondatori dell'Associazione Italiana per il World Wildlife Fund, in cui ricoperse a lungo le cariche di Vice Presidente e Consigliere nazionale; sempre in campo conservazionistico ebbe incarichi anche nel WWF International Council e in Italia Nostra.

In ambito entomologico dal 1957 fu ininterrottamente socio della Società Entomologica Italiana e ne venne eletto Consigliere dal 1996 al 2013; di ancor maggior rilievo fu il suo impegno nella Associazione Romana di Entomologia, di cui fu Vice Presidente dal 1980 al 1995 e Presidente dal 2001 al 2009.

A partire dal 2009 fu purtroppo colpito da una forma di atrofia multisistemica di tipo parkinsoniano, che lo limitò fisicamente ma non mentalmente, tanto che ne informò con lucida consapevolezza amici e colleghi, decidendo nel contempo di destinare al Museo Civico di Zoologia di Roma la sua splendida collezione di Cicindelidi, composta da 216 scatole con 51.118 esemplari riferibili a 1.727 specie, molte delle quali rappresentate da materiale tipico. Nel dicembre 2013 Cassola ebbe ancora il piacere di dare alle stampe, e distribuire agli amici e colleghi, un volume col catalogo completo della sua importantissima raccolta: un caso pressoché unico di perfetto ordinamento, che per il futuro richiederà solo di essere conservato come tale.

Il decesso è avvenuto a Roma il 14 gennaio 2016.

---

### **Angelo Morisi (1943-2016)**

Nato il 28 giugno 1943 a Padova, dove si laureò in Scienze Biologiche, si trasferì poi a Cuneo, città in cui ha svolto la propria attività lavorativa, prima all'Ospedale di Cuneo e quindi al Laboratorio Provinciale di Igiene, in seguito confluito nell'Agenzia Regionale per la Protezione Ambientale del Piemonte.

Negli anni giovanili ha iniziato ad occuparsi di erpetologia e poi di biospeleologia, organizzando tra l'altro un laboratorio sotterraneo nelle Grotte di Bossea e studiando in particolare i Coleotteri Carabidi, sui quali ha pubblicato alcune note. Successivamente ha avviato un importante monitoraggio biologico sulla qualità dei fiumi del Cuneese, utilizzando i macroinvertebrati bentonici, e sulla qualità dell'aria, servendosi dei licheni. Nel 1979 fu fra i fondatori dell'Associazione Naturalistica Piemontese, che presiedette dal 2004 al 2009.

Negli ultimi anni l'insorgere di una grave malattia, progressivamente invalidante, lo ha costretto a rallentare e poi a interrompere del tutto la sua attività scientifica e soprattutto quella divulgativa, in cui eccelleva. Collaboratore e poi conservatore onorario del Museo Craveri di Bra, al quale ha lasciato in dono le proprie collezioni e la biblioteca specializzata, Morisi è mancato a Cuneo il 6 febbraio 2016. Alla nostra Società è stato iscritto dal 1965 al 1987.

---

### **Renato Regalin (1961-2016)**

Nato a Milano il 26 aprile 1961, si iscrisse alla nostra Società ad appena 13 anni, nel 1974, dichiarando già da allora, nella scheda di iscrizione, il proprio interesse per i Coleotteri Crisomelidi, gruppo cui in effetti dedicò la massima parte dei suoi lavori tassonomici, specializzandosi soprattutto sui Clytrini, ma senza trascurare le ricerche biospeleologiche, di cui si occupò in particolare negli anni giovanili e che gli permisero di radunare una collezione di un migliaio di Coleotteri cavernicoli poi venduta nel 1994 al Museo Naturalistico Archeologico di Vicenza.

Regalin ha svolto la sua attività professionale come tecnico entomologo presso l'ex Istituto di Entomologia Agraria dell'Università di Milano (oggi confluito nel Dipartimento di Scienze per gli Alimenti, la Nutrizione e l'Ambiente), curando le collezioni entomologiche e gli allevamenti sperimentali e tenendo sotto controllo l'arrivo di specie alloctone nel nostro territorio.

Autore di una quarantina di apprezzate pubblicazioni scientifiche e divulgative, ha descritto una ventina di nuove specie di Crisomelidi, svolgendo ricerche sul campo oltre che in Italia, in varie nazioni del bacino mediterraneo nonché in Asia e in Venezuela.

Parallelamente all'entomologia si è anche occupato della raccolta e dello studio degli ex libris, ambito in cui ha conseguito una notevole esperienza, tanto da essere eletto nel Consiglio Direttivo della Associazione Italiana Ex libris.

Dopo una lunga malattia che, tra miglioramenti e peggioramenti, non gli ha purtroppo lasciato scampo, è deceduto nella sua città natale il 21 marzo 2016, un mese prima di compiere 55 anni. Nel novembre 2015 era riuscito a dare alle stampe il suo ultimo accurato lavoro: un volume di 113 pagine, scritto in collaborazione col collega Jan Bezděk, contenente la basilare revisione sistematica dei Clytrini west-paleartici descritti da Pic e Kocher.

## ASSEMBLEA GENERALE ORDINARIA DEI SOCI DEL 12 MARZO 2016

L'Assemblea Generale Ordinaria della Società Entomologica Italiana ha luogo sabato 12 marzo 2016, alle ore 15, nella sede operativa di Corso Torino 19/4 scala A, Genova, per deliberare in merito ai punti del seguente

### ORDINE DEL GIORNO

- 1) Convalida dei soci presentati dal Consiglio
- 2) Comunicazioni della Presidenza
- 3) Relazione dei membri del Consiglio
- 4) Bilancio consuntivo esercizio 2015 e previsioni per il 2016
- 5) Pubblicazioni sociali
- 6) Varie ed eventuali

Sono presenti 21 soci senza alcuna delega; a presiedere l'Assemblea viene eletto il Presidente della Società Pennacchio.

- 1) Il Vice Presidente, in sostituzione del Segretario assente, legge i nomi dei nuovi soci in attesa di convalida; sono approvati all'unanimità 12 nuovi soci (11 ordinari e 1 studente). Sono inoltre regolarizzate all'unanimità le posizioni di 11 soci (10 ordinari ed 1 studente) proposti nel 2013, ma di cui era sfuggita la formale approvazione nelle precedenti Assemblee.
- 2) Il Presidente comunica ai presenti l'ipotesi di proporre una forma di promozione straordinaria della Società presso i giovani, offrendo l'iscrizione gratuita (solo per il primo anno) a tutti i dottorandi e assegnisti in attività nelle Facoltà italiane di Scienze Agrarie, Biologiche e Naturali; si tratterebbe di un notevole numero di appassionati (al momento 117 per la sola Agraria) che potrebbero poi eventualmente decidere di confermare la loro iscrizione negli anni successivi. L'Assemblea approva.  
Riferisce poi sull'organizzazione del prossimo Congresso Europeo di Entomologia (Napoli, 2018), in particolare sulla composizione del Comitato Scientifico.  
Comunica inoltre che è pervenuta dalla Società Entomologica Ellenica la richiesta di supporto alla candidatura della Grecia per l'organizzazione del XXVI Congresso Internazionale di Entomologia, proposto per il 2020 e da tenersi a Creta, richiesta che viene approvata.  
Informa infine sulla ipotesi di un protocollo d'intesa proposto dall'Associazione Nazionale Italiana dei Disinfestatori con particolare riguardo all'entomologia forense: l'Assemblea non approva.
- 3) Il Consigliere Ballerio auspica che sul numero di giugno della Newsletter possano apparire sintetiche relazioni sui lavori svolti nel prossimo Congresso di Padova.  
Il Vice Presidente comunica che, a seguito della prolungata assenza del Segretario negli ultimi mesi, si è assunto l'incarico di seguire i lavori della Segreteria, in ciò efficacemente coadiuvato dal Bibliotecario. Per vedere di sanare le pregresse situazioni di morosità di numerosi soci, si è intrapresa a fine 2015 una capillare azione di sollecito, che ha dato positivi risultati. Gli iscritti sono attualmente 556, una cinquantina dei quali di prossima cancellazione per morosità triennale e per non aver mai dato riscontro alle nostre comunicazioni; 469 soci hanno invece fornito il proprio indirizzo e-mail, che favorisce e velocizza i rapporti. A fine febbraio erano 250 i Soci già in regola col versamento della quota 2016. Ricorda poi i nomi dei Soci deceduti dopo l'ultima Assemblea generale: Francesco Gandini e Giovanni Zambon (nel 2015) e Fabio Cassola e Angelo Morisi (nel 2016). Rammenta infine ai presenti la chiusura del contenzioso sui pagamenti arretrati IMU-ICI, conclusosi positivamente per la Società grazie anche al gratuito patrocinio legale del Consigliere Ballerio.
- 4) Il Bibliotecario, anche a nome dell'Amministratore, presenta il bilancio consuntivo 2015 e illustra l'ipotesi di quello preventivo 2016, riportati qui di seguito, che vengono approvati all'unanimità.

## SOCIETA' ENTOMOLOGICA ITALIANA

## BILANCIO CONSUNTIVO 2015

**I. STATO PATRIMONIALE AL 31.12.2015**

## PATRIMONIO SOCIALE

Immobile Sede Biblioteca Sociale (valore catastale riv.)	€ 405.407,52	
Fondo riserva	€ 15.000,00	
Mobili & Attrezzi (pro memoria)	€ 1,00	
Biblioteca (pro memoria)	€ 1,00	
		€ 420.409,52

## LIQUIDITÀ AL 31.12.2015

Conto corrente bancario	€ 7.050,68	
Conto corrente postale	€ 9.497,05	
		€ 16.547,73

Totale	€ 436.957,25
--------	--------------

**II. RENDICONTO DI CASSA AL 31.12.2015**

## INTROITI

1. Liquidità al 31.12.2014	€ 20.597,29
2. Quote sociali (importi netti)	€ 19.957,77
3. Contributo 5‰ ex-IRPEF	€ 3.820,16
4. Contributo ministeriale	€ 2.418,00
Totale	€ 46.793,22

## ESBORSI

5. Conto economico	€ 17.872,04
6. Costo pubblicazioni sociali (stampa, confezione & spedizione)	€ 12.327,45
Totale	€ 30.245,49

## LIQUIDITÀ FINALE AL 31.12.2015 (come da stato patrimoniale)

7. Accantonamento a fronte rischi	€ 13.000,00
Totale	€ 3.547,73

## RATEI PASSIVI AL 31.12.2015

Spese pubblicazione (a calcolo)	
- Stampa, confezione e spedizione	€ 5.000,00
Totale	€ 5.000,00

<b>Disavanzo al 31.12.2015</b>	<b>€ 1.452,47</b>
--------------------------------	-------------------



**III. DIMOSTRAZIONE DEL CONTO ECONOMICO 2015**

5.1 – Gestione ordinaria Sede Sociale	€	4.765,02
5.2 – Biblioteca Sociale	€	7.887,86
5.3 – Fondo minute spese Segreteria	€	200,00
5.4 – Fondo minute spese Biblioteca	€	500,00
5.5 – Fondo minute spese Amministrazione	€	300,00
5.6 – Postali e bancarie ordinarie	€	365,79
5.7 – Spese spedizioni straordinarie per arretrati reclamati	€	2.317,82
5.8 – Assicurazioni diverse	€	624,72
5.9 – Imposte e tasse	€	910,83
Saldo al 31.12.2015 (come da rendiconto di cassa)	€	17.872,04

**BILANCIO PREVENTIVO ANNO 2016**

## INTROITI

1. Quote sociali	€	20.000,00
2. Utilizzo fondo di riserva	€	13.000,00
		Totale € 33.000,00

## ESBORSI

3. Ratei passivi al 31.12.2015	€	5.000,00
4. Spese pubblicazione (stampa, confezione, spedizione)	€	12.000,00
5. Biblioteca sociale	€	6.000,00
6. Spese generali di gestione, incl. imposte e tasse	€	10.000,00
		Totale € 33.000,00

*L' Amministratore*  
(Giulio Gardini)

*Il Bibliotecario*  
(Antonio Rey)

- 5) Il Direttore delle Pubblicazioni riferisce sinteticamente sulle pubblicazioni sociali in corso, comunicando che sono stati presentati e in revisione articoli sufficienti per il prossimo volume. Il Presidente interviene invece per riferire sullo stato di "Entomologia", periodico pubblicato in collaborazione con l'Accademia Nazionale Italiana di Entomologia, per il quale si auspica un buon assestamento.
- 6) Il Consigliere Battisti informa sinteticamente sull'organizzazione del XXV Congresso Nazionale Italiano di Entomologia (Padova, 20-24 giugno 2016), riferendo che gli iscritti al momento sono già circa 200.

Il Presidente ricorda che anche quest'anno si proporranno giornate culturali in collaborazione con l'Accademia Nazionale Italiana di Entomologia.

Il Socio Galli infine riferisce di aver portato recentemente alcuni suoi studenti in visita alla Biblioteca della SEI, in collaborazione col Bibliotecario, e di aver tenuto lo scorso anno una "summer-school" sugli Insetti destinata a studenti del corso triennale di Scienze Naturali dell'Università di Genova.

Esauriti gli argomenti all'ordine del giorno, l'Assemblea viene chiusa alle ore 16,20.

Al termine dei lavori, su invito del Consigliere Battisti, interviene il Prof. Myron P. Zalucki dell'University of Queensland (Brisbane, Australia), che presenta ai soci una interessante relazione sullo stato di conservazione delle popolazioni americane della "farfalla monarca" (*Danaus plexippus* (L.)).

---

# SOCIETÀ ENTOMOLOGICA ITALIANA

---

## ■ QUOTE ASSOCIATIVE PER IL 2016:

Soci Ordinari dei paesi UE	40,00 €
Soci Ordinari dei paesi extra UE	60,00 €
Studenti fino a 27 anni	20,00 €

I soci che desiderano ricevere il Bollettino in versione cartacea devono aggiungere 10,00 € alla normale quota associativa.

Se si tratta della prima iscrizione bisogna aggiungere 10,00 €.

Il rinnovo della quota deve essere effettuato entro il primo bimestre dell'anno; la quota versata oltre tale periodo deve essere aumentata del 50%.

## ■ VERSAMENTI

- Conto Corrente Postale n. 15277163 intestato a:  
Società Entomologica Italiana, via Brigata Liguria 9, 16121 Genova
- Bonifico Bancario intestato a: Società Entomologica Italiana  
cod. IBAN: IT85F0335901600100000121701    BIC-CODE: BCITITMX  
c/o Banca Prossima spa, Via Paolo Ferrari n. 10, 20121 Milano, Italia

■ **SEGRETERIA** Società Entomologica Italiana, via Brigata Liguria 9, 16121 Genova

■ **BIBLIOTECA** Società Entomologica Italiana, Corso Torino 19/4 sc. A, 16129 Genova  
(orario: sabato 15.00-18.00, tel. 010.586009)

■ **HOME PAGE:** <http://www.societaentomologicaitaliana.it>

■ **E-MAIL:** [info@societaentomologicaitaliana.it](mailto:info@societaentomologicaitaliana.it)

■ **ISTRUZIONI PER GLI AUTORI:** Gli autori che desiderino pubblicare sulle Riviste della Società devono attenersi alle Istruzioni pubblicate sul sito:  
<http://sei.pagepress.org/index.php/bollettino/information/authors>

---

LA PRESENTE PUBBLICAZIONE, FUORI COMMERCIO, NON È IN VENDITA

---

E VIENE DISTRIBUITA GRATUITAMENTE SOLO AI SOCI IN REGOLA CON LA QUOTA SOCIALE.

---

---

INDICE

---

vol. 148 fascicolo I

---

- Lorenzo Zanella  
MICROSYSTEMATIC REVISION OF THE POPULATIONS OF *ABAX PARALLELEPIPEDUS*  
(PILLER & MITTERPACHER, 1783) OCCURRING IN CENTRAL-WESTERN EUROPE  
(Coleoptera Carabidae) 3
- Gianni Allegro - Luca Cristaldi  
CAMPIONAMENTI DI CARABIDI NEL PARCO FLUVIALE DEL PO  
(TRATTO ALESSANDRINO, PIEMONTE) MEDIANTE TRAPPOLE LUMINOSE A LUCE DI WOOD  
(Coleoptera Carabidae) 33
- Segnalazioni faunistiche italiane 41
- Atti sociali 44

REGISTRATO PRESSO IL TRIBUNALE DI GENOVA AL N. 76 (4 LUGLIO 1949)  
Prof. Achille Casale - Direttore Responsabile  
Spedizione in Abbonamento Postale 70% - Quadrimestrale  
Pubblicazione a cura di PAGEPress - Via G. Belli 7, 27100 Pavia  
Stampa: Press Up srl, via La Spezia 118/C, 00055 Ladispoli (RM), Italy



SOCIETÀ ENTOMOLOGICA ITALIANA via Brigata Liguria 9 Genova