

Matthias RIEDEL, Salvatore TOMARCHIO

A contribution to the Ichneumoninae fauna of Sicily (Hymenoptera Ichneumonidae)

Riassunto: *Contributo alla conoscenza degli Ichneumoninae di Sicilia (Hymenoptera, Ichneumonidae)*

In questa indagine faunistica, si forniscono dati sulla distribuzione di 79 specie della sottofamiglia Ichneumoninae (Hymenoptera, Ichneumonidae) trovate in Sicilia. 39 di esse sono nuove per la fauna di Sicilia e 9 sono nuove per l'Italia. Dal materiale esaminato è descritta per la Sicilia una nuova specie, *Platylabus rufator* Riedel.

Abstract: In this faunistic survey, authors give distributional records for 79 species of the subfamily Ichneumoninae (Hymenoptera, Ichneumonidae) found on Sicily. 39 of them are new for the fauna of Sicily, nine species have not been found in Italy so far. From the available material a new species, *Platylabus rufator* Riedel, is described.

Key words: Ichneumonidae, *Platylabus*, new species, Italy, Sicily.

INTRODUCTION

With more than 24,000 valid extant species worldwide the Ichneumonidae are one of the largest families of the Hymenoptera (Yu *et al.*, 2005). About 4,500-5,000 species have been found in Europe so far. Therefore, this Hymenoptera family represents the most diverse insect group in most European countries. But despite their abundance and important role in biological pest control, the taxonomy, ecology, and distribution of many groups of Ichneumonidae remain incompletely known.

The Ichneumoninae represent a very species-rich subfamily of Ichneumonidae, usually parasitizing Lepidoptera. From Italy, about 385 different species of this subfamily have been reported so far, 51 of them were also found on Sicily (Scaramozzino, 1995).

MATERIALS AND METHODS

This study is mainly based on the material of two collections, the personal collection of S. Tomarchio that has been sent for determination to Mt. Riedel, and the collection of G.F. Turrisi which is now housed in the Zoologische Staatssammlung Munich/Germany (ZSM).

Specimens were usually collected by hand-netting, especially in the Eastern parts of Sicily. The distributional records were taken from the catalogue of Yu *et al.* (2005) and the checklist of Italian Ichneumonidae compiled by Scaramozzino (1995). All identifications were made by the first author, we excluded some specimens with uncertain determination, mainly some ♂ of the genus *Ichneumon*.

RESULTS AND LIST OF SPECIES

PHAEOGENINI

Aethecerus nitidus Wesmael, 1845

MATERIAL. Calascibetta (Enna), 1 ♂ 1.XI.1994, G. F. Turrisi leg.

DISTRIBUTION. Western Palaearctic region, known from Italy (Scaramozzino, 1995), new for Sicily.

Diadromus heteroneurus Holmgren, 1890

MATERIAL. Etna Ovest Mt. Maletto, 1600 m, 1 ♂ 20.VII.1999, S. Tomarchio leg.

DISTRIBUTION. Western Palaearctic region, new for Italy.

LISTRODROMINI

Anisobas brombacheri Heinrich, 1933

MATERIAL. San Gregorio (CT) 200 m, 1 ♂ 4.v.1997, G. F. Turrisi leg.

DISTRIBUTION. Western Palaearctic region, known from Sicily (Horstmann, 2007).

Anisobas cingulatellus Horstmann, 1997 syn. *Anisobas cingulatorius* (Gravenhorst, 1829) praeocc.

MATERIAL. Mt. Erei, Aidone (EN), 760 m, Case Bonincontro, 1 ♀ 8.V.2000, S. Tomarchio leg.; Piana di Catania, C. da Primosole, 4 ♂ 11.VI.1996, G. F. Turrisi leg.

DISTRIBUTION. Widespread in the Palaearctic region, known from Italy (Horstmann, 2007, Scaramozzino, 1995 as *Anisobas cingulatorius*), new for Sicily.

Anisobas rebellis Wesmael, 1845

MATERIAL. Mt. Etna, Linguaglossa, Mt. Baracca, 1700 m, 1 ♀ 26.VIII.1994, G. F. Turrisi leg.; Fiume Vizzini - Vizzini (CT), Poggio del Lago 600 m, 1 ♂ 7.V.1994, G. F. Turrisi leg.

DISTRIBUTION. Widespread in the Palaearctic region, known from Sicily (Horstmann, 2007).

Listrodromus nycthemerus (Gravenhorst, 1820)

MATERIAL. Mt. Etna, Zafferana Etnea (CT), Valle San Giacomo, 800 m, 1 ♀ 12.VII.1995, G. F. Turrisi leg.

DISTRIBUTION. Widespread in the Palaearctic region, known from Italy (Scaramozzino, 1995), new for Sicily.

PLATYLABINI

Apaeleticus bellicosus Wesmael, 1845

MATERIAL. Mt. Rossi (Nicolosi, CT) 750 m, 1 ♂ 1.V.1994, G. F. Turrisi leg.; Nebrodi, Foresta di Malabotta, Roccella Valdemone (ME) 1000 m, 1 ♂ 28.VIII.1995, G. F. Turrisi leg.

DISTRIBUTION. Western Palaearctic region, known from Italy (Scaramozzino, 1995), new for Sicily.

Apaeleticus inimicus (Gravenhorst, 1820)

MATERIAL. Piana di Catania, C.da Primosole, 1 ♂ 20.IV.1997, G. F. Turrisi leg.

DISTRIBUTION. Western Palaearctic region, known from Italy (Scaramozzino, 1995), new for Sicily.

Apaeleticus mesostictus (Gravenhorst, 1829)

MATERIAL. Piana di Catania, Contrada Primosole, 1 ♂ 2.V.1998, G. F. Turrisi leg.

DISTRIBUTION. Palaearctic region, new for Italy.

Cyclolabus pactor (Wesmael, 1845)

MATERIAL. Tremestieri Etneo (Catania), 1 ♂ 18.IV.1994, 1 ♂ 25.IV.1994, G. F. Turrisi leg.; Mt. Rossi (Nicolosi, CT) 750 m, 1 ♂ 1.v.1994, G. F. Turrisi leg.; San Gregorio di Catania 300 m, 2 ♂ 20.IV.1994, 1 ♂ 4.V.1997, G. F. Turrisi leg.; Tremestieri Etneo (Catania), 350 m, 1 ♂ 20.IV.1994, 1 ♀ 16.V.1994, 1 ♂ 20.v.1995, 1 ♀ 28.IV.1996, G. F. Turrisi leg.

DISTRIBUTION. Western Palaearctic region, known from Italy (Scaramozzino, 1995), new for Sicily.

Linyces exhortator (Fabricius, 1787)

MATERIAL. Tremestieri Etneo (Catania), 1 ♂ 22.III.1994, G. F. Turrisi leg.

DISTRIBUTION. Widespread in the Holarctic region, known from North Italy (Pagliano, 2009) and Sicily (Scaramozzino, 1995).

Platylabus iridipennis (Gravenhorst, 1829)

MATERIAL. Mt. Etna, dintorni Mt. Rossi (Nicolosi, CT), 700 m, 1 ♂ 12.X.1997, G. F. Turrisi leg.

DISTRIBUTION. Western Palaearctic region, known from Italy (Riedel, 2008), new for Sicily.

Platylabus obator (Desvignes, 1856)

MATERIAL. Tremestieri Etneo (Catania), 1 ♂ 20.III.1994, G.F. Turrisi leg., Mt. Etna, C.da Fontanamurata, 1000 m (Maletto, CT), 2 ♂ 18.V.1996, G. F. Turrisi leg.

DISTRIBUTION. Western Palaearctic region, known from Italy (Roberti *et al.*, 1965), new for Sicily.

Platylabus rufator spec. nov.

MATERIAL. Mt. Etna, Tremestieri Etneo (CT) 350 m, 1 ♀ 29.III.1993, Coll. Turrisi.

DISTRIBUTION. So far only known from Sicily.

Platylabus tricingulatus (Gravenhorst, 1820)

MATERIAL. Mt. Etna, Milo (Catania), 750 m, 1 ♀ 21.VII.1998, G. F. Turrisi leg.

DISTRIBUTION. Western Palaearctic region, known from Italy (Scaramozzino, 1995, Riedel 2008), new for Sicily.

JOPPOCRYPTINI

Pseudoplatylabus uniguttatus (Gravenhorst, 1829)

MATERIAL. Tremestieri Etneo (Catania), 1 ♂ 9.XI.1994, G. F. Turrisi leg.

DISTRIBUTION. Western Palaearctic region, new for Italy.

TROGINI

Trogus lapidator (Fabricius, 1787)

MATERIAL. Fiume Vizzini, Vizzini (CT), 1 ♀ 31.V.1992, G. F. Turrisi leg.

DISTRIBUTION. Holarctic and Oriental regions, known

from North Italy (Pagliano, 2009) and Sicily (Scaramozzino, 1995).

HERESIARCHINI

Coelichneumon biguttorius (Thunberg, 1789) syn. *serenus* Gravenhorst

MATERIAL. Buccheri (CT), 2 ♂ 24.V.2000, S. Tomarchio leg.; Mt. Etna, Foresta Cubania (Milo, CT), 1400 m, 1 ♂ 6.IX.1995, Alicata & Giusso leg.

DISTRIBUTION. Western Palaearctic region, known from Sicily (Rudow, 1888, Horstmann, 1993, 2002).

Coelichneumon erythromerus (Rudow, 1888)

MATERIAL. Etna C.da Milia (Ragalna, CT), 1500 m, 1 ♂ 30.VIII.1992, S. Tomarchio leg.

DISTRIBUTION. Western Palaearctic region, known from North Italy (Pagliano, 2009) and Sicily (Scaramozzino, 1995).

Coelichneumon graecus Horstmann, 2002

MATERIAL. Pachino (SR), Pantano Longarini, 1 ♂ 4.VI.1995, Bella leg..

DISTRIBUTION. Only known from Greece, new for Italy.

Coelichneumon oltensis Constantineanu, Pirvescu & Mihalache, 1979

MATERIAL. Selinunte, 2 ♂ 13.IV.1965 (Natural History Museum, London).

DISTRIBUTION. Known from Great Britain and Romania, new for Italy.

Coelichneumon quadriannulatus (Gravenhorst, 1829)

MATERIAL. Mt. Etna, Casa Pietracannone (Milo, CT) 1100 m, 1 ♂ 12.VII.1998, G. F. Turrisi leg.; Mt. Etna, C. da Fontanamurata (Maletto, CT), 1000 m, 1 ♂ 29.VI.1996, 3 ♂ 7.VII.1996, G. F. Turrisi leg.

DISTRIBUTION. Known from France, Germany, and Poland, new for Italy.

Protichneumon fusorius fusorius (Linnaeus, 1761)

MATERIAL. Mt. Etna, Linguaglossa (CT), Mt. Baracca, 1700 m, 1 ♂ 8.VIII.1996, G. F. Turrisi leg.

DISTRIBUTION. Palaearctic region, known from North Italy (Pagliano, 2009) and Sicily (Sichel, 1860).

Syspasis carinator (Fabricius, 1798)

MATERIAL. Mt. Etna, Milo (CT), Fornazzo 800 m, 1 ♂ 8.X.1994, G. F. Turrisi leg.

DISTRIBUTION. Western Palaearctic region, known from Italy (Scaramozzino, 1995 as *helleri*), new for Sicily.

Syspasis leucolomia (Gravenhorst, 1829)

MATERIAL. Mt. Etna, C. da Fontanamurata, 1000 m (Maletto), 1 ♂ 26.X.1997, G. F. Turrisi leg.

DISTRIBUTION. Western Palaearctic region, known from Italy (Pagliano, 2009) and Sardinia (Pic, 1899), new for Sicily.

Syspasis scutellator (Gravenhorst, 1829)

MATERIAL. Mt. Etna, Linguaglossa (CT), Mt. Baracca, 1700 m, 2 ♂ 23.VIII.1995, G. F. Turrisi leg.; Mt. Etna, C. da Fontanamurata, 1000 m (Maletto), 1 ♂ 7.VII.1996, G. F. Turrisi leg.

DISTRIBUTION. Widespread in the Palaearctic region, known from Italy (Pagliano, 2009) and Sicily (Scaramozzino, 1995).

ICHNEUMONINI

Amblyteles armatorius Forster, 1771

MATERIAL. C.da S. Leo, Belpasso (CT), 1100 m, 1 ♀ 29.V.1991, G. F. Turrisi leg.; San Gregorio Catania, 1 ♀ 5.V.1994, G. F. Turrisi leg.; Buccheri (CT), 1 ♂ 24.V.2000, S. Tomarchio leg.; Etna, 1000 m, Mt. S. Leo Belpasso (CT), 1 ♂ 17.V.1992, S. Tomarchio leg.; Etna Mt. S. Leo 1000 m, - CT, 1 ♂ 16.V.1994, S. Tomarchio leg.

DISTRIBUTION. Widespread in the Palaearctic region, known from Sicily (Sichel, 1860, De Stefani, 1896).

Baranisobas ridibundus (Gravenhorst, 1829)

MATERIAL. Mt. Etna, Mt. Vetore 1700 m (Ragalna), 2 ♂ 31.VIII.1997, G. F. Turrisi leg.; Mt. Etna, Nicolosi, Mt. Vetore 1750 m, 3 ♂ 26.VIII.1995, G. F. Turrisi leg.; Mt. Etna, Casa Paternò 1300 m (Milo, CT), 1 ♂ 29.VIII.1996, G. F. Turrisi leg.; Mt. Iblei, Fiume Vizzini, C. da Rubalà, 320 m, 1 ♂ 1.X.1996, G. F. Turrisi leg.; Nebrodi, Foresta di Malabotta, Roccella Valdemone (ME) 1000 m, 1 ♂ 28.VIII.1995, G. F. Turrisi leg.; Catania, San Nullo, 1 ♂ 4.VI.1994, G. F. Turrisi leg.; Tremestieri Etneo (Catania), 1 ♂ 9.XI.1994, G. F. Turrisi leg.; Mt. Etna, Milo (CT) Fornazzo 800 m, 1 ♀ 15.IX.1994, G. F. Turrisi leg.

DISTRIBUTION. Western Palaearctic region, known from Italy (Scaramozzino, 1995), new for Sicily.

Barichneumon bilunulatus (Gravenhorst, 1829)

Taxonomical remark: The available ♂ has an ivory stripe on the flagellomeres 15-17 (var. *subannulatus* Berthoumieu).

MATERIAL. Mt. Etna, Casa Pietracannone, 1100 m (Milo, CT), 1 ♂ 12.VII.1998, G. F. Turrisi leg.

DISTRIBUTION. Widespread in the Palaearctic region, known from Italy (Pagliano, 2009) and Sicily (De Stefani, 1895, Scaramozzino, 1995).

Barichneumon derogator (Wesmael, 1845)

MATERIAL. Tremestieri Etneo (Catania), 2 ♂ 1.VI.1994, 2 ♂ 7.VI.1994, G. F. Turrisi leg.

DISTRIBUTION. Widespread in the Palaearctic region, known from Sicily (De Stefani, 1895, Scaramozzino, 1995).

Barichneumon gemellus (Gravenhorst, 1829)

MATERIAL. Mt. Etna, Milo (CT), 750 m, 1 ♂ 21.VII.1998, G. F. Turrisi leg.

DISTRIBUTION. Widespread in the Palaearctic region, new record for Italy.

Barichneumon lituratae (Hartig, 1838)

MATERIAL. Mt. Etna, C. da Milia 1250 m, 1 ♂ 9.VI.1996, G. F. Turrisi leg.; Mt. Etna, C. da Fontanamurata, 1000 m (Maletto), 2 ♂ 9.VII.1995, G. F. Turrisi leg.; Mt. San Leo - Belpasso (CT), 1 ♂ 4.VII.1992, G. F. Turrisi leg.

DISTRIBUTION. Western Palaearctic region, new for Italy.

Barichneumon sedulus (Gravenhorst, 1820)

MATERIAL. Mt. Etna, C. da Fontanamurata, 1000 m (Maletto), 1 ♂ 28.VI.1998, G. F. Turrisi leg.; Mt. Etna, Serra La Nave, 1730 m (Ragalna), 1 ♂ 26.VI.1999, G. F. Turrisi leg.; Paternò - CT, C. da Petulenti, 1 ♂ 3.VI.1993, S. Tomarchio leg.; Vizzini - CT, 1 ♂ 21.V.2000, S. Tomarchio leg.; Mt. Etna, Casa Pietracannone, 1100 m (Milo), 1 ♂ 12.VII.1998, G. F. Turrisi leg.; Madonie-Palermo Petralia Sottana Piano Battaglia, Valle di Zotta Fonda, 1650 m, 1 ♂ 14.VII.1993, G. F. Turrisi leg.

DISTRIBUTION. Widespread in the Palaearctic region, known from Sicily (De Stefani, 1894).

Cratichneumon coruscator (Linnaeus, 1758)

MATERIAL. Mt. Etna, Mt. Baracca 1700 m, Linguaglossa, 1 ♂ 21.VIII.1996, G. F. Turrisi leg.; Etna Sud, C. da Milia, 1400 m, 1 ♂ 10.VIII.1999, S. Tomarchio leg.; Iblei, Fiume Vizzini, C. da Rubala, 320 m, 1 ♀ 16.V.1999, G. F. Turrisi leg.; Mt. Etna, Nicolosi, Mt. Vetore 1750 m, 1 ♂ 26.VIII.1995, G. F. Turrisi leg.; Nebrodi, Foresta di Malabotta, Roccella Valdemone 1000 m, 1 ♂ 28.VIII.1995, G. F. Turrisi leg.

DISTRIBUTION. Widespread in the Palaearctic region, known from Italy (Scaramozzino, 1995), new for Sicily.

Cratichneumon culex (Müller, 1776)

MATERIAL. Etna Ovest Mt. Maletto, 1600 m, 1 ♂ 20.VIII.1999, S. Tomarchio leg.

DISTRIBUTION. Widespread in the Palaearctic region, known from Italy (Scaramozzino, 1995), known from Sicily (Cecconi, 1924).

Cratichneumon viator (Scopoli, 1763)

MATERIAL. Etna Ovest Mt. Maletto, 1600 m, 1 ♂ 20.VII.1999, S. Tomarchio leg.; Nebrodi, Foresta di Malabotta, Roccella Valdemone 1000 m, 1 ♂ 28.VIII.1995, G. F. Turrisi leg.; Mt. Etna, Mt. Scorsone 1600 m (Milo), 1 ♂ 10.VIII.1996, G. F. Turrisi leg.; Mt. Etna, Mt. Vetore 1700 m (Ragalna) 1 ♂ 31.VIII.1997, G. F. Turrisi leg.; Mt. Etna, Caserma Pitarrone 1450 m (Castigione di Sicilia), 1 ♀ 30.II.1998, G. F. Turrisi leg.; Mt. Etna, Casa Pietracannone, 1100 m (Milo), 1 ♂ 28.VIII.1996, G. F. Turrisi leg.

DISTRIBUTION. Widespread in the Holarctic regions, known from Italy and Sardinia (Scaramozzino, 1995), new for Sicily.

Crypteffigies pseudocryptus (Wesmael, 1857)

MATERIAL. Mt. Etna, Linguaglossa, Mt. Baracca, 1700 m, 1 ♂ 7.VII.1995, 2 ♂ 23.VIII.1995, G. F. Turrisi leg.

DISTRIBUTION. Palaearctic region, known from Italy (Scaramozzino, 1995), new for Sicily.

Crytea erythraea (Gravenhorst, 1820)

MATERIAL. Mt. Etna, Milo 750 m, 1 ♂ 21.VII.1998, G. F. Turrisi leg.

DISTRIBUTION. Western Palaearctic region, known from Italy (Scaramozzino, 1995), new for Sicily.

Ctenichneumon divisorius (Gravenhorst, 1820)

MATERIAL. Tremestieri Etneo Catania, 1 ♀ 24.III.1994, G. F. Turrisi leg.

DISTRIBUTION. Palaearctic region, known from Italy (Scaramozzino, 1995), new for Sicily.

Ctenichneumon melanocastaneus (Gravenhorst, 1820)

MATERIAL. Tremestieri Etneo Catania, 1 ♂ 9.III.1994, 2 ♂ 20.III.1994, 1 ♀ 22.III.1994, 1 ♀ 24.III.1994, G. F. Turrisi leg.; Mt. Etna, Monterosso Etneo 500 m, 1 ♀ 21.IV.1996, leg. G. F. Turrisi.

DISTRIBUTION. Palaearctic region, known from Italy (Scaramozzino, 1995), new for Sicily.

Ctenichneumon messorius (Gravenhorst, 1820)

MATERIAL. Mt. Etna, C. da Fontanamurata, 1000 m (Maletto), 1 ♀ IV. 1999, leg. A. Messina; Mt. Etna, C. da Fontanamurata, 1000 m (Maletto), 1 ♀ 29.VI.1996, 1 ♀ 7.VII.1996, G. F. Turrisi leg.

DISTRIBUTION. Palaearctic region, known from Italy (Pagliano, 2009) and Sicily (De Stefani, 1895).

Ctenichneumon repentinus (Gravenhorst, 1820)

MATERIAL. Mt. Etna, C. da Fontanamurata, 1000 m (Maletto), 1 ♂ 28.VI.1998, G. F. Turrisi leg.

DISTRIBUTION. Palaearctic region, known from Italy (Pagliano, 2009) and Sicily (Rudow, 1888).

Ctenochares bicolorus (Linnaeus, 1767)

MATERIAL. Piana di Catania, Passo Martino 37°24'N 16°02'E, 1 ♂ 15.VI.2010, S. Tomarchio leg.; Catania, 1 ♀ 7.III.1997, S. Tomarchio leg. (2319), 1 ♀ 14.V.1998, S. Tomarchio leg.; F. Vizzini, Vizzini - CT, 1 ♀ 16.IX.1993, S. Tomarchio leg.; Etna Ovest, 800 m, Randazzo (CT) Lago Gurridda, 1 ♀ 18.VIII.2001, S. Tomarchio leg.; Piana di Catania Primosole, 2 ♂ 11.VI.1996, G. F. Turrisi leg.; Valle S. Giacomo, Zafferana, 750 m, 1 ♂ 21.VIII.1991, G. F. Turrisi leg.; Iblei, Fiume Vizzini, 320 m, 1 ♀ 16.V.1999, G. F. Turrisi leg.

DISTRIBUTION. Widespread in the Palaearctic, Ethiopian and Australasian regions, known from Sicily (De Stefani, 1895) and Lampedusa (Pagliano & Scaramozzino, 1995).

Diphyus amatorius (Müller, 1776)

MATERIAL. Etna Sud, 1000 m, Mt. San Leo, Belpasso

- CT, 1 ♂ 25.V.2004, S. Tomarchio leg.

DISTRIBUTION. Widespread in the Palaearctic region and known from Italy (Scaramozzino, 1995), new for Sicily.

Diphyus castanopyga (Stephens, 1835)

MATERIAL. Mt. Soro - Nebrodi, P.IIa Femmina Morta, ME, 1520 m, 1 ♂ 19.VIII.1991, G. F. Turrisi leg.; Mt. Etna, C. da Fontanamurata, 1000 m (Maletto), 1 ♂ 7.VII.1996, G. F. Turrisi leg.

DISTRIBUTION. Western Palaearctic region and known from Italy (Pagliano, 2009).

Diphyus mercatorius mercatorius (Fabricius, 1793)

MATERIAL. Mt. Etna, C. da Fontanamurata, 1000 m, 1 ♂ 28.VI.1998, G. F. Turrisi leg.; Mt. Etna, C. da Milia, 1250 m, 1 ♂ 2.VI.1993, G. F. Turrisi leg.; Mt. San Leo, Belpasso (CT), 1 ♂ 24.VI.1982, G. F. Turrisi leg.

DISTRIBUTION. Palaearctic region, known from Italy (Scaramozzino, 1995), new for Sicily.

Diphyus quadripunctorius (Müller, 1776)

MATERIAL. Mt. S. Leo - Belpasso (CT), 1 ♂ 4.VI.1992, leg. F. G. Turrisi; Tremestieri Etneo Catania, 1 ♂ 16.V.1994, G. F. Turrisi leg.

DISTRIBUTION. Widespread in the Palaearctic and Oriental regions, known from Italy (Alma & Arzone, 1994) and Sicily (Sichel, 1860).

Diphyus pseudomercator Heinrich, 1978

MATERIAL. Etna Mt. S. Leo, 1000 m, Belpasso-CT, 1 ♀ 16.V.1999, S. Tomarchio leg.

DISTRIBUTION. Western Palaearctic region, known from Italy (Scaramozzino, 1995), new for Sicily

Diphyus trifasciatus (Gravenhorst, 1829)

MATERIAL. Nebrodi, Mt. Soro P.IIa Femmina Morta, 1520 m, 1 ♂ 11.VIII.1991, G. F. Turrisi leg.

DISTRIBUTION. Palaearctic region, known from Sicily (Scaramozzino, 1995).

Eupalamus oscillator Wesmael, 1845

MATERIAL. Etna Ovest, Pendici Mt. Maletto (CT), 1600 m, 1 ♀ 28.VII.1999, S. Tomarchio leg.

DISTRIBUTION. Palaearctic region, known from Italy (Scaramozzino, 1995), new for Sicily.

Eutanyacra glaucatoria (Fabricius, 1793)

MATERIAL. Paternò CT, C. da Petulenti, 1 ♀ 9.V.1993, S. Tomarchio leg. (547), 1 ♀ 9.V.1993, S. Tomarchio leg.; Etna Mt. S. Leo, 1000 m, Belpasso CT, 2 ♂ 16.V.1999, S. Tomarchio leg.; Mt. Etna, Randazzo La Gurridda 850 m, 1 ♀ 22.VIII.1995, G. F. Turrisi leg.

DISTRIBUTION. Widespread in the Palaearctic region, known from Italy (Pagliano, 2009) and Sicily (Sichel, 1860, De Stefani, 1894).

Eutanyacra picta (Schrank, 1776)

MATERIAL. Mount Etna, Tremestieri Etneo 350 m, 1 ♀ 28.VI.1998, G. F. Turrisi leg.; Mount Etna, Tremestieri Etneo 350 m, 1 ♂ 15.IV.1993, 1 ♀ 2.VI.1998, G. F. Turrisi leg.; Piedimonte Etneo (CT) C.da Terremonte, 1 ♀ 1.VI.1993, ex *Euxoa fritici* (Linnaeus, 1761) (Lep., Noctuidae), leg. G. Costa; Portopalo di C.P., Capo delle Correnti (SR), light trap, 13 ♂ and 3 ♀ 31.VII.1992, G. F. Turrisi leg.

DISTRIBUTION. Widespread in the Palaearctic and Oriental region, known from Italy (Scaramozzino, 1995), Sardinia and Sicily (Pagliano, 2009).

Homotherus locutor (Thunberg, 1824)

MATERIAL. Mt. Etna, Linguaglossa, Mt. Baracca, 1700 m, 1 ♂ 21.VIII.1996, G. F. Turrisi leg.; Nebrodi, Foresta di Malabotta, Roccella Valdemone 1000 m, 1 ♂ 24.VII.1994, G. F. Turrisi leg.; Mt. Etna, San Gregorio 300 m, 1 ♂ 20.IV.1994, G. F. Turrisi leg.; Tremestieri Etneo Catania, 1 ♂ 9.III.1994, 2 ♂ 1.IV.1994, G. F. Turrisi leg.; Mt. Etna, C. da Fontanamurata, 1000 m (Maletto, Catania), 1 ♂ 7.VII.1996, G. F. Turrisi leg.

DISTRIBUTION. Palaearctic region, known from Italy (Scaramozzino, 1995), new for Sicily

Hoplismenus axillatorius (Thunberg, 1824)

MATERIAL. Piana di Catania, C. da Primosole, 1 ♀ 8.VIII.1996, G. F. Turrisi leg.

DISTRIBUTION. Palaearctic region, known from Sicily (Sichel, 1860, De Stefani, 1895).

Ichneumon affector affector Tischbein, 1879

Taxonomical remark: The ♀ has the hind tibia completely black, fourth tergite red in the basal half, and pterostigma yellowish-brown, otherwise as described by Hilpert (1992).

MATERIAL. Mt. Nebrodi, Biviere di Cesarò (Cesarò,

Messina), 1274 m, 1 ♀ 23.VI.1999, G. F. Turrisi leg.

DISTRIBUTION. Western Palaearctic region, known from Italy (Scaramozzino, 1995), new for Sicily.

Ichneumon balteatus Wesmael, 1845

MATERIAL. Mt. Maletto, 1550 m, 1 ♂ 24.VII.1992, S. Tomarchio leg. (151).

DISTRIBUTION. Palaearctic region, known from Italy (Scaramozzino, 1995), new for Sicily.

Ichneumon cessator Müller, 1776

MATERIAL. Mt. Nebrodi, Biviere di Cesarò (Cesarò, Messina), 1274 m, 2 ♂ 23.VI.1999, G. F. Turrisi leg.; Mt. Etna, Linguaglossa, Mt. Baracca, 1700 m, 2 ♂ 8.VIII.1996, 1 ♂ 21.VIII.1996, G. F. Turrisi leg.

DISTRIBUTION. Palaearctic region, known from Italy (Scaramozzino, 1995), new for Sicily.

Ichneumon extensorius Linnaeus, 1758

MATERIAL. Mt. Etna, Mt. Scorsone 1600 m (Milo), 3 ♂ 10.VIII.1996, G. F. Turrisi leg., Mt. Etna, Casa Pietracannone, 1150 m, 1 ♂ 8.VIII.1996, G. F. Turrisi leg., Mt. Etna, Linguaglossa, Mt. Baracca, 1700 m, 3 ♂ 8.VIII.1996, 2 ♂ 21.VIII.1996, G. F. Turrisi leg.; Mt. Etna, S. Alfio Pietrafucile 850 m, 1 ♂ 28.VII.1998, G. F. Turrisi leg.; Mt. Etna, Foresta Ragabo, 1500 m (Castiglione di Sicilia), 1 ♀ 20.XII.1997, S. Bella leg.; Mt. Etna, Foresta Cubania, 1400 m (Milo), 1 ♀ 6.IX.1995, Alicata & Giusso leg.; Mt. Nebrodi, Biviere di Cesarò (Cesarò, ME), 1274 m, 1 ♀ 23.VI.1999, G. F. Turrisi leg.

DISTRIBUTION. Palaearctic region and known from Italy (Pagliano, 2009) and Sicily (Scaramozzino, 1995).

Ichneumon gracilicornis Gravenhorst, 1829

MATERIAL. Mt. Etna, Mt. Palestra 1900 m (Bronte), 1 ♀ 24.VIII.1996, G. F. Turrisi leg.; Mt. Etna, Linguaglossa, Mt. Baracca, 1700 m, 1 ♀ 8.VIII.1996, G. F. Turrisi leg.

DISTRIBUTION. Palaearctic region, known from Italy (Scaramozzino, 1995), new for Sicily.

Ichneumon minutorius Desvignes, 1856

MATERIAL. Mt. Etna, Linguaglossa, Mt. Baracca, 1700 m, 1 ♀ 7.VII.1995, G. F. Turrisi leg.

DISTRIBUTION. Palaearctic region, known from Italy (Scaramozzino, 1995), new for Sicily.

Ichneumon languidus Wesmael, 1845

MATERIAL. Mt. Etna, C. da Fontanamurata, 1000 m (Maletto), 1 ♂ 7.VI.1998, G. F. Turrisi leg.

DISTRIBUTION. Palaearctic region, known from Italy (Scaramozzino, 1995), new for Sicily.

Ichneumon quaesitorius Linnaeus, 1761

MATERIAL. Mt. Nebrodi, Biviere di Cesarò (Cesarò, Messina), 1274 m, 1 ♂ 23.VI.1999, G. F. Turrisi leg.; Mt. Etna, Maletto C. da Fontanamurata, 1000 m, 1 ♂ 8.X.1995, G. F. Turrisi leg.

DISTRIBUTION. Palaearctic region, known from Italy (Scaramozzino, 1995), new for Sicily.

Ichneumon sarcitorius Linnaeus, 1758

MATERIAL. Mt. Maletto Etna, 1550 m, 1 ♂ 24.VII.1992, S. Tomarchio leg.; Etna Sud, 1700 m, Fossa della Nave, 1 ♂ 10.VIII.2000, S. Tomarchio leg.; Piana di Catania, Contrada Primosole, 1 ♂ 2.V.1998, 1 ♂ 21.VI.1998, G. F. Turrisi leg.; Mt. Etna, C. da Fontanamurata, 1000 m (Maletto), 1 ♂ 28.VI.1998, G. F. Turrisi leg.; Mt. S. Leo, 100 m, 1 ♀ 7.VII.1992, G. F. Turrisi leg.; Mt. Etna, C. da Fontanamurata, 1000 m (Maletto), 1 ♂ 9.VII.1995, 1 ♀ 1 ♂ 29.VI.1997, G. F. Turrisi leg.; Piana di Catania, C. da Primosole, 1 ♂ 11.VI.1996, G. F. Turrisi leg.

DISTRIBUTION. Palaearctic region, known from Italy (Pagliano, 2009) and Sicily (De Stefani, 1895).

Ichneumon tuberculipes Wesmael, 1848

Taxonomical remark: of the two ♂ one has the typical ivory coloration (see Hilpert, 1992), the other one has a small yellowish spot on the scutellum, the body is otherwise completely black.

MATERIAL. Bosco di Malabotta (Peloritani), 1 ♀ 15.XI.1992, G. F. Turrisi leg.; Mt. Etna, Milo, 2 ♂ 21.VII.1998, G. F. Turrisi leg.; Mt. Etna, Mt. Vetore, 1700 m, (Ragalna), 1 ♂ 31.VIII.1997, G. F. Turrisi leg.; Mt. Etna, Foresta Ragabo, 1500 m (Castiglione di Sicilia), 1 ♀ 20.XII.1997, Mt. Etna, Foresta Ragabo, 1500 m (Castiglione di Sicilia), 1 ♀ 20.XII.1997, under cortex of *Pinus laricio* Poiret, Bella leg.; Mt. Etna, C. da Fontanamurata, 1000 m (Maletto), 1 ♀ 9.VII.1995, G. F. Turrisi leg.; Mt. Etna,

Milo, 750 m, 1 ♂ 21.VII.1998, G. F. Turrisi leg.

DISTRIBUTION. Palaearctic region, known from Italy (Scaramozzino, 1995), new for Sicily.

Ichneumon xanthorius Forster, 1771

MATERIAL. Mt. Etna, Zafferana Etnea, Valle San Giacomo 800 m, 1 ♂ 25.VI.1995, G. F. Turrisi leg.

DISTRIBUTION. Palaearctic region, known from Italy (Pesarini, 2009) and Sicily (Scaramozzino, 1995).

Pseudoamblyteles homocerus (Wesmael, 1854)

MATERIAL. Etna Sud, 950 m, around Mt. Serra Pizzuta (Nicolosi - Catania), 1 ♀ 30.V.2001, S. Tomarchio leg.; Etna, Mt. S Leo, 1000 m, Comune di Belpasso, 1 ♂ 7.VI.1992, S. Tomarchio leg.; Motta S Anastasia Catania S.D. 12/II KM 2, 1 ♂ 21.V.2000, S. Tomarchio leg.; Paternò (Catania), C. da Petulenti, 1 ♂ 15.V.1993, S. Tomarchio leg.; Mt. Etna, Linguaglossa, Mt. Baracca, 1700 m, 2 ♂ 26.VIII.1994, 1 ♀ 7.VII.1995, 3 ♂ 8.VIII.1996, 1 ♂ 21.VIII.1996, G. F. Turrisi leg.; F. Alcantara Calatabiano (Catania) 4 ♂ 4.VI.1999, G. F. Turrisi leg.; Mt. Nebrodi, Biviere di Cesarò (ME), 1274 m, 3 ♂ 23.VI.1998, G. F. Turrisi leg.; Mts. Iblei F. Vizzini Poggio Morbano, 600 m, 1 ♀ and 1 ♂ 1.VI.1996, G. F. Turrisi leg.; Piana di Catania, C. da Primosole, 2 ♂ 4.VI.1995, 2 ♂ and 6 ♂ 26.V.1996, 1 ♀ and 4 ♂ 11.VI.1996, G. F. Turrisi leg.; Mt. Etna, Mt. San Leo, Catania 1000 m, 1 ♂ 2.VI.1993, G. F. Turrisi leg.; Mt. San Leo - Belpasso (CT) 1 ♂ 24.VI.1992, 1 ♂ 4.VII.1992, 1 ♂ 9.VII.1992, G. F. Turrisi leg.; Mt. Etna, C.da S. Leo (CT), 1 ♂ 22.VI.1991, G. F. Turrisi leg.; Mt. Etna, San Gregorio 300 m, 2 ♂ and 3 ♂ 5.V.1994, 1 ♀ 7.V.1995, G. F. Turrisi leg.; Mt. Etna, C. da Fontanamurata, 1000 m (Maletto), 1 ♀ and 1 ♂ 9.VII.1995, 1 ♀ 28.VI.1998, G. F. Turrisi leg.; Tremestieri Etneo Catania, 1 ♂ 21.V.1994, 1 ♀ 25.III.1995, 1 ♀ 24.V.1995, G. F. Turrisi leg.; Mt. Etna, Casa Paternò 1300 m (Milo), 1 ♂ 23.V.1992, 4 ♂ 22.VIII.1996, 1 ♀ 29.VIII.1996, G. F. Turrisi leg.; Calascibetta (Enna) 800 m, 1 ♀ 1.XI.1994, G. F. Turrisi leg.

DISTRIBUTION. Holarctic region, known from Italy (Pagliano, 2009) and Sicily (Sichel, 1860, Pic, 1899).

Spilothyrates illuminatorius (Gravenhorst, 1820)

Taxonomical remark: clypeus and face centrally yellowish, frontal and facial orbits reddish

MATERIAL. Mt. Etna, Serra La Nave 1730 m (Ragalna), 1 ♀ 26.VI.1999, G. F. Turrisi leg.; Mt. Etna, Milia, 1250 m, 1 ♂ 4.XI.1992, S. Tomarchio leg.; Etna Adrano (Catania), C. da Solicchiata, 1 ♂ 1.XI.1994, S. Tomarchio leg.; Piana di Catania, C. da Primosole, 1 ♂ 26.V.1996, leg. G. F. Turrisi

DISTRIBUTION. Palaearctic region, known from Italy (Scaramozzino, 1995), new for Sicily.

Spilothyrates nuptatorius (Fabricius, 1793) syn. ***fabricii*** (Gravenhorst, 1829)

MATERIAL. C. da Galvarina, 1870 m, Etna W, 1 ♂ 22.VII.1992, 1 ♂ 23.VII.1992, S. Tomarchio leg.; Etna Adrano (Catania), C. da Solicchiata, 1 ♂ 1.XI.1994, S. Tomarchio leg.; Mt. Etna, Linguaglossa, Mt. Baracca, 1700 m, 1 ♂ 7.VII.1995, G. F. Turrisi leg.

DISTRIBUTION. Western Palaearctic region, known from Italy (Scaramozzino, 1995 as *fabricii*), new for Sicily.

Stenobarichneumon basiglytus (Kriechbaumer, 1890)

MATERIAL. Mt. Etna, C. da Fontanamurata, 1000 m (Maletto), 1 ♂ 8.X.1995, G. F. Turrisi leg.; Nebrodi, Foresta di Malabotta, Roccella Valdemone 1000 m, 3 ♂ 28.VIII.1995, G. F. Turrisi leg.

DISTRIBUTION. Palaearctic region, known from Italy (Scaramozzino, 1995), new for Sicily.

Thyrates haereticus (Wesmael, 1854)

MATERIAL. Mt. Etna, Serra La Nave 1730 m, 1 ♂ 7.IX.1997, G. F. Turrisi leg.; Mt. Etna, Belpasso Mt. Manfrè 1400 m, 1 ♂ 25.VIII.1995, G. F. Turrisi leg.; F. Alcantara Calatabiano (Catania) 1 ♂ 4.VI.1999, G. F. Turrisi leg.; Iblei Noto La Burretta (Siracusa), 1 ♂ 23.X.1994, G. F. Turrisi leg.

DISTRIBUTION. Palaearctic region, known from Italy (Scaramozzino, 1995), new for Sicily.

Tricholabus strigatorius (Gravenhorst, 1829)

Taxonomical remark: the ♀ from Serra La Nave has black hind legs (except a small subbasal reddish ring of hind tibia).

MATERIAL. Mt. Etna, Mt. Maletto, 1550 m, 1 ♀ 24.VII.1992, S. Tomarchio leg.; Mt. Etna, Serra La Nave, 1730 m (Ragalna), 1 ♀ 26.VI.1999, G. F. Turrisi leg.

DISTRIBUTION. Palaearctic and Oriental regions, known from Italy (Scaramozzino, 1995), new for Sicily.

Triptognathus atripes (Gravenhorst, 1820)

MATERIAL. Etna Sud - Mt. S. Leo, 1000 m, Belpasso (CT), 1 ♀ 26.VI.1999, S. Tomarchio leg.; Mt. Etna, Milia, 1250 m, 1 ♀, S. Tomarchio leg.; Mt. Etna, Mt. San Leo, 1000 m, 1 ♀ 27.IV.1994, G. F. Turrisi leg.; Mt. San Leo, Belpasso (CT), 2 ♂ 7.VII.1992, G. F. Turrisi leg.; Mt. Etna, C. da Fontanamurata, 1000 m (Maletto), 1 ♀ 29.VI.1997, G. F. Turrisi leg.; Mt. Etna, Milia, 1 ♀ 7.VI.1992, G. F. Turrisi leg.

DISTRIBUTION. Palaearctic region, known from Italy (Scaramozzino, 1995) and Sicily (Sichel, 1860, De Stefani, 1895).

Triptognathus fumigator (Gravenhorst, 1820)

MATERIAL. Etna Sud - Mt. S. Leo, 1000 m, Belpasso (CT), 1 ♂ 26.VI.1999, S. Tomarchio leg.; Mt. Etna, C. da Fontanamurata, 1000 m (Maletto), 2 ♂ 4.VII.1992, 2 ♂ 28.VI.1998, G. F. Turrisi leg.; Mt. Etna, Linguaglossa, Mt. Baracca, 1700 m, 1 ♂ 24.VII.1995, G. F. Turrisi leg.

DISTRIBUTION. Palaearctic region, known from Italy (Bauer, 1936) and Sicily (Scaramozzino, 1995).

Virgichneumon albosignatus (Gravenhorst, 1829)

MATERIAL. Mt. Etna, C. da Fontanamurata, 1000 m (Maletto), 1 ♀ 7.VII.1996, G. F. Turrisi leg.; Mt. Etna, Casa Pietracannone, 1100 m (Milo), 1 ♂ 12.VII.1998, G. F. Turrisi leg.

DISTRIBUTION. Palaearctic region, known from Italy (Scaramozzino, 1995), new for Sicily.

Virgichneumon digrammus (Gravenhorst, 1820)

MATERIAL. Mt. Etna Sud, C. da Milia, 1250 m, 1 ♂ 15.VIII.1995, 1 ♂ 17.VIII.1996, S. Tomarchio leg.; Mt. Etna Milia, 1250 m, 1 ♂ 26.VIII.1992, S. Tomarchio leg.; around Gole dell'Alcantara, 1 ♀ 22.V.1993, S. Tomarchio leg.; Mt. Etna, Mt. Vetore, 1700 m (Ragalna), 1 ♂ 31.VIII.1997, G. F. Turrisi leg.; Mt. Etna, C. da Fontanamurata, 1000 m (Maletto), 1 ♂ 24.VIII.1995, G. F. Turrisi leg.

DISTRIBUTION. Palaearctic region, known from Italy (Scaramozzino, 1995), new for Sicily.

Virgichneumon tenuicornis (Heinrich, 1930)

MATERIAL. Mt. Etna, Zafferana Mt. Zoccolaro 1600 m, 1 ♂ 30.VIII.1995, G. F. Turrisi leg.

DISTRIBUTION. Known from Southern Europe, new for Italy.

Virgichneumon tergenus (Gravenhorst, 1820)

MATERIAL. Mt. Etna, Foresta Cubania, 1400 m (Milo), 1 ♀ 7.VIII.1995, G. F. Turrisi leg.; Mt. Etna, Casa Paternò 1300 m (Milo), 3 ♂ 22.VIII.1996, G. F. Turrisi leg.; Mt. Etna, Mt. Scorsone 1600 m (Milo), 2 ♂ 10.VIII.1996, G. F. Turrisi leg.; Mt. Etna, Caserma Pittarrone 1450 m (Castigione di Sicilia), 1 ♀ 30.VII.1998, G. F. Turrisi; Valle di Zotta Fonda 1650 m, 1 ♂ 14.VII.1993, G. F. Turrisi leg.; Mt. Etna, Serra La Nave 1730 m (Ragalna), 1 ♀ 7.IX.1997, G. F. Turrisi leg.; Mt. Etna, Sant'Alfio, C. da Cerrita, 1400 m, 2 ♂ 21.VIII.1998, 1 ♀ 9.V.1999, G. F. Turrisi leg.; Mt. Etna, Belpasso Mt. Manfrè 1400 m, 1 ♀ 25.VIII.1995, G. F. Turrisi leg.

DISTRIBUTION. Palaearctic region, known from Sicily (De Stefani, 1895).

Vulgichneumon deceptor (Scopoli, 1763)

MATERIAL. Etna Sud, C. da Milia, 1400 m, 1 ♂ 10.VIII.1999, S. Tomarchio leg.; Mt. Etna, MT. Vetore 1700 m (Ragalna), 1 ♂ 31.VIII.1997, G. F. Turrisi leg.; Mt. Etna, Mt. Palestra 1900 m (Bronte), 1 ♂ 24.VIII.1996, G. F. Turrisi leg.

DISTRIBUTION. Palaearctic region, known from Italy (Scaramozzino, 1995), new for Sicily.

Vulgichneumon saturatorius (Linnaeus, 1758)

MATERIAL. Mt. Etna, Linguaglossa, MT. Baracca, 1700 m, 2 ♂ 29.VII.1998, G. F. Turrisi leg.

DISTRIBUTION. Palaearctic region, known from Italy (Pagliano, 2009) and Sicily (De Stefani, 1895).

DESCRIPTIONS

Platylabus rufator M. Riedel n. sp.

HOLOTYPE. ♀ - Sicily, Mt. Etna, Tremestieri Etneo 350 m, 29.III.1993, Coll. Turrisi (Zoologische Staatssammlung München).

DESCRIPTION. Body length 5 mm.

FLAGELLUM. Slightly lanceolate, with 27 flagellomeres, first flagellomere (without anellus) 4 times as

long as wide, first and second flagellomeres together 0,8 times as long as the eye, widest flagellomeres about square.

HEAD. temple profile distinctly narrowed and slightly curved. Diameter of the lateral ocellus about as long as the distance to compound eye. Frons finely punctured, more or less shining, face densely rugose-punctate, matte, clypeus moderately convex, with fine punctation. Malar space about as long as the width of mandibular base. Hypostomal carina elevated, about 1,5 times as wide as the last segment of maxillary palps.

MESOSOMA. Notauli not impressed, mesoscutum with dense puncture and shining. Mesopleurum densely punctate, puncture of metapleurum more scattered. Epicnemium not elevated. Coxal carina not developed. Scutellum about as long as wide, moderately convex, almost smooth, with lateral carina in the basal 0,5, propodeal spiracle oval, 1,5 times as long as wide. Area superomedia slightly wider than long, finely rugose, frontal and lateral carinae weak, without costulae (Fig. 1). Area petiolaris with superficial rugae, more or less smoothed and shining.

LEGS. Hind coxa with dense puncture and without scopa. Hind femur about 4 times as long as high, hind metatarsus about 0,4 as long as hind tibia and 1,3 times as long the segments 2-4 of hind tarsus together. Apical segments of tarsi not distinctly elongate, with moderately large claws, these without dentations.

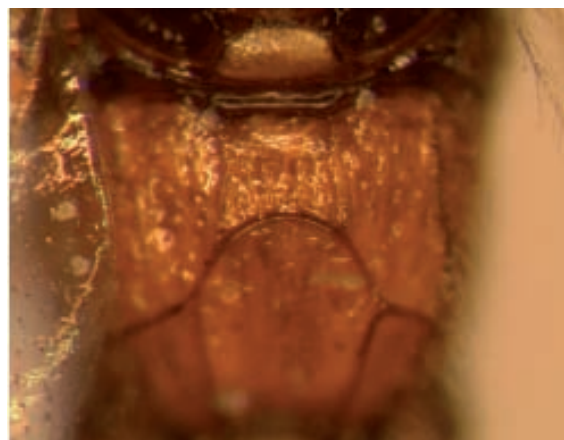


Fig. 1. *Platylabus rufator* Riedel, holotype ♀. Propodeum, dorsal view.



Fig. 2. *Platylabus rufator* Riedel, holotype ♀. Metasoma, dorsal view.

METASOMA (Fig. 2). Postpetiolus moderately widened, about 0,7 as wide as the distance of the dentiparal edges of propodeum, its median field finely rugulose, without dorsal carinae. Second tergite about 0,7 as long as wide, gastrocoeli slightly impressed, thyridiae oblique, each of them about as wide as their interval, the median field of postpetiolus slightly wider than the thyridial interval. Second tergite with dense but shallow punctation and fine rugosity in the basal half, more or less matte, third tergite with very superficial puncture, granulated and matte, following tergites granulated and matte. Hypopygium long (Metasoma strongly amblypygous), ovipositor slightly projecting behind the metasoma.

COLOUR. Head blackish, face reddish-yellow. Scape reddish beneath, first and second flagellomeres reddish, flagellomeres 9-11 with an ivory stripe. Ivory are the frontal orbit and narrow spot on outer orbit. Mesosoma red with darkened margins of scuta, pleura, and propodeum. Ivory are collare and upper margin of pronotum, spot on tegula, subtegular ridge, scutellum

and postscutellum. Tergites 1-3 red, the following dark brown to black. Legs including coxae and trochanters red. Apical segments of front and middle tarsi, hind tibia in the apical 0,2 and hind tarsus completely blackish. Pterostigma brown. ♂ unknown.

TAXONOMICAL REMARKS. In the recent key of the genus *Platylabus* (Riedel, 2008) the new species runs to *Platylabus cabrerai* Berthoumieu, 1903 from Tenerife, but differs by its smaller size and coloration of the flagellum and metasoma. It also has affinities to the species *Platylabus iridipennis* (Gravenhorst, 1829), but beside the extensive red coloration of the body it is different in the shape of hind leg and the structure of its propodeum.

ACKNOWLEDGEMENTS

We thank Dr Stefan Schmidt for his help and kind allowance to study the collection of G.F. Turrisi in the Zoologische Staatssammlung in Munich/Germany.

REFERENCES

- ALMA A. & ARZONE A., 1994 - Notizie fitopatologiche ed epidemiologiche su nottuidi in vigneti piemontesi. Atti XVII Congresso Nazionale italiano di Entomologia, Udine: 559-562.
- BAUER E., 1936 - Beitrag zur Ichneumoniden-Fauna von San Valentino alla Muta (Val Venosta). Bollettino della Società Entomologica Italiana, 68: 103-111.
- CECCONI G., 1924 - Manuale di Entomologia forestale. Padua, 1-680.
- DE STEFANI T., 1894 - Imenotteri di Sicilia raccolti nel territorio di Santa Ninfa in Provincia di Trapani. Naturalista siciliano 13:199-203.
- DE STEFANI T., 1895 - Catalogo degli Imenotteri di Sicilia. Naturalista siciliano 14: 169-182.
- HORSTMANN K., 1993 - Revision der von Ferdinand Rudow beschriebenen Ichneumonidae I. Beitr. Ent. 43: 3-38.
- HORSTMANN K., 2002 - Über einige mit *Coelichneumon orbitator* (Thunberg, 1824) nah verwandte Arten (Hymenoptera, Ichneumonidae, Ichneumoninae). Entomofauna 23: 73-84.
- HORSTMANN K., 2007 - Revision der westpaläarktischen Arten von *Ansiobas* Wesmal, 1845 (Hymenoptera, Ichneumonidae, Ichneumoninae). Entomofauna 28: 93-116.
- PAGLIANO G., 2009 - Le collezioni del Museo Regionale di Scienze Naturali di Torino. Ichneumonidae della fauna d'Italia e citazioni nuove per il Piemonte (Hymenoptera). Bollettino del Museo regionale di Scienze Naturali di Torino, 27: 153-240.
- PAGLIANO G. & SCARAMOZZINO P.L., 1995 - Hymenoptera Gasteruptionidae, Ichneumonidae e Aculeata (esclusi Chrysidoidea, Mutillidae e Formicidae, in Massa B. (ed.), Arthropoda di Lampedusa, Linosa e Pantelleria (Canale di Sicilia, Mar Mediterraneo). Naturalista siciliano, 19: 723-738.
- PESARINI F., 2009 - Contributo preliminare sugli Imenotteri Terebranti (non Evanioidei) della collezione Campadelli. VII contributo. Annali del Museo Civico di Storia Naturale di Ferrara, 11: 1-115.
- PIC M., 1899 - Sur quelques Ichneumoniens de la Coll. Tournier. Revue Scientifique du Bourbonnais 12: 100-103.
- RIEDEL M., 2008 - Revision der westpaläarktischen Platylabini: 1. Die Gattung *Platylabus* Wesmäl, 1845 (Hymenoptera, Ichneumonidae, Ichneumoninae). Spixiana 31: 105-172.
- ROBERTI D., FRILLI F., PIZZAGHI W., 1965 - Contributo alla conoscenza dell'entomofauna del Piacentino (Specie raccolte nel decennio 1955-1964). Entomologica 1: 1-118.
- RUDOW F., 1888 - Einige neue Ichneumoniden. Entomologische Nachrichten 14 (9): 129-136.
- SCARAMOZZINO P.L., 1995 - Hymenoptera Ichneumonidae. In: Minelli, A., Ruffo, S. & La Posta S. (eds.), Checklist delle specie della fauna italiana, 94. Calderini, Bologna.
- SICHEL J., 1860 - Liste des Hymenopteres recueillis en Sicile par Mt. E. Bellier de la Chavignerie pendant les mois d'Aout a Septembre 1859. Ann. Soc. entomol. Fr. (3) 8: 749-764.
- YU D.S., VAN ACHTERBERG K. & HORSTMANN K., 2005 - World Ichneumonidea 2004. Taxonomy, Biology, Morphology and Distribution. CD/DVD. Taxapad, Vancouver, Canada.

Autors' addresses:

Matthias Riedel, Amselweg 9 A, 29683 Bad Fallingb., Germany. E-mail: mamaflo.riedel@t-online.de
Salvatore Tomarchio, Via Don Alvaro Paternò, 29, 95027 San Gregorio di Catania, Italy.
E-mail: tomarchiosalvo@yahoo.it